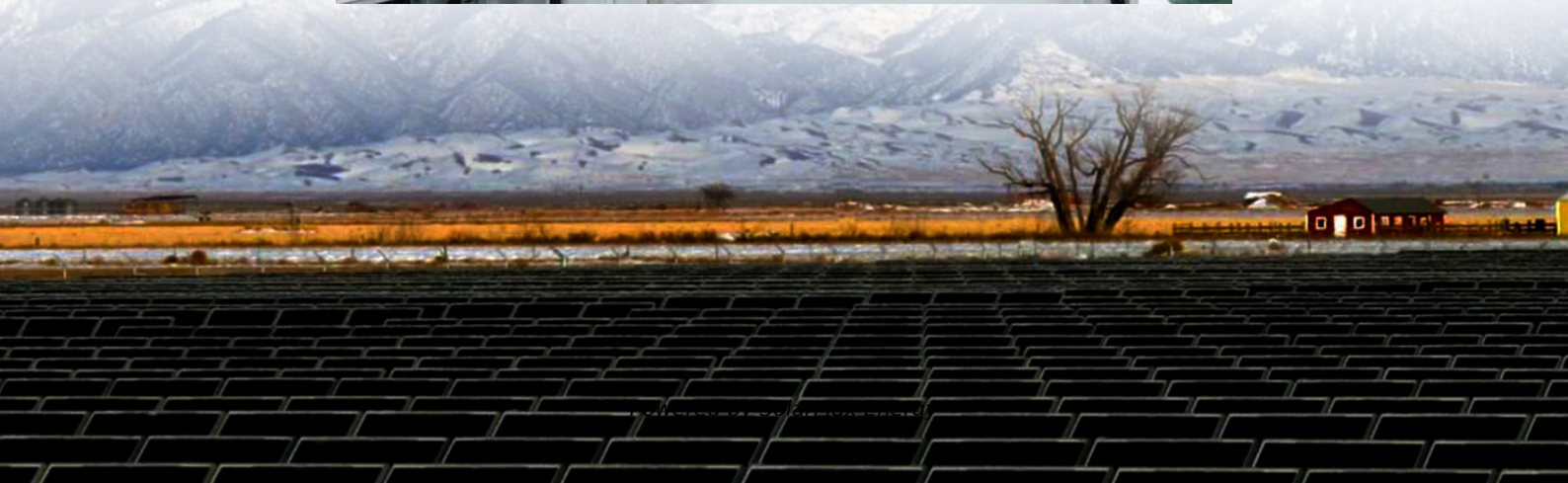


# **Where are communication signal base stations usually placed**





## Overview

---

In communications, a base station is a communications station installed at a fixed location and used to communicate as part of one of the following:

- a system, or;
- a system such as or .

The base station antennas are usually placed on rooftops, in masts or on building walls. Antennas are sometimes also installed in shopping malls, airports, offices, and other places with many mobile phone users. Indoor antennas are usually placed on walls or on ceilings.

What is a signal transmission & reception base station?

Signal Transmission and Reception Base stations use antennas mounted on cell towers to send and receive radio signals to and from mobile devices within their coverage area. This communication enables users to make voice calls, send texts, and access data services, connecting them to the wider world.

How do base stations work?

Base stations use antennas mounted on cell towers to send and receive radio signals to and from mobile devices within their coverage area. This communication enables users to make voice calls, send texts, and access data services, connecting them to the wider world.

Network Management and Optimization.

What is a base station in a cellular telephone network?

Base stations in cellular telephone networks are more commonly referred to as cell towers. Each cellphone connects to the cell tower, which in turn connects it to the wired public switched telephone network (PSTN), the internet or to other cellphones within the cell.

Why are base stations important in cellular communication?

Base stations are important in the cellular communication as it facilitate seamless communication between mobile devices and the network communication. The demand for efficient data transmission are increased as we are advancing towards new technologies such as 5G and other data



intensive applications.

What are base stations & cell towers?

Base stations and cell towers are critical components of cellular communication systems, serving as the infrastructure that supports seamless mobile connectivity. These structures facilitate the transmission and reception of signals between mobile devices and the wider network, enabling voice calls, text messages, and data services.

What is a base station in radio communications?

In radio communications, a base station is a wireless communications station installed at a fixed location and used to communicate as part of one of the following: a wireless telephone system such as cellular CDMA or GSM cell site. Base stations use RF power amplifiers (radio-frequency power amplifiers) to transmit and receive signals.



## Where are communication signal base stations usually placed

---



### The Architecture of Modern Ground Stations

By utilizing advanced antenna systems, ground stations can make cost-effective technology choices that not only boost data transmission ...

### Repeaters for beginners: From FM stations to global ...

Relay stations are operated automatically, i.e. unmanned, and convert a single FM signal from an input frequency to another output ...



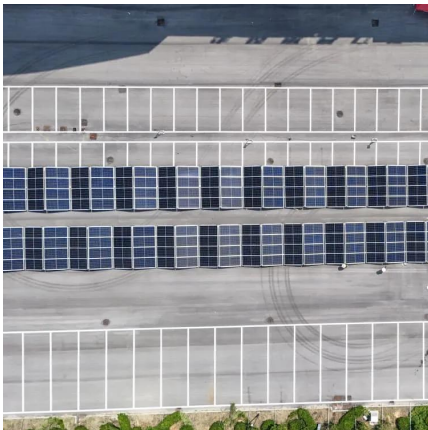
### **Base stations and networks**

The base station antennas are usually placed on rooftops, in masts or on building walls. Antennas are sometimes also installed in shopping malls, airports, offices, and other places with many ...

### **4 types of Base stations**

Macro cell, Micro cell, Pico cell and Femto cell are 4 types of base stations in wireless communication networks. Macrocell antennas must be properly mounted on ground-based ...





### [What Are Base Station Antennas? Complete Guide](#)

Base station antennas are also known as cell site antennas and cellular antennas, and they are typically mounted on a tower or rooftop and ...

## **The Truth About Cell Phone Towers**

What is a Cell Site? A "cell site" is where antennas and electronic communication equipment are placed. Cell sites are usually on a radio mast, tower, or building ...



## **Base Stations and Cell Towers: The Pillars of Mobile Connectivity**

Base stations use antennas mounted on cell towers to send and receive radio signals to and from mobile devices within their coverage area. This communication enables ...



## The Base Station in Wireless Communications: The Key to ...

Base station, also known as BTS (Base Transceiver Station), is a key device in wireless communication systems such as GSM. Equipped with an electromagnetic wave ...



### Base Station's Role in Wireless Communication Networks

What is a base station? A base station is a critical component of wireless communication networks. It serves as the central point of a network that connects various devices, such as ...



## Base Stations

The present-day tele-space is incomplete without the base stations as these constitute an important part of the modern-day scheme of wireless ...



## Satellite communication

Satellite communication - Orbit, Signals, Relay: A satellite is basically a self-contained communications system with the ability to receive signals from Earth and to ...



## What is a base station?

Base stations in cellular telephone networks are more commonly referred to as cell towers. Each cellphone connects to the cell tower, which in turn connects it to the wired public ...



## Base Stations and Cell Towers: The Pillars of Mobile ...

Base stations use antennas mounted on cell towers to send and receive radio signals to and from mobile devices within their coverage area.

...

## What is a base station?

What is a base station? In telecommunications, a base station is a fixed transceiver that is the main communication point for one or more ...



## EMF

When base stations are located close to users, the transmitter power required by the mobile phone and the base station to communicate is relatively low. If base stations were located ...





## Base station

OverviewWireless communicationsLand surveyingComputer networkingSee also

In radio communications, a base station is a wireless communications station installed at a fixed location and used to communicate as part of one of the following: o a push-to-talk two-way radio system, or;o a wireless telephone system such as cellular CDMA or GSM cell site.



### [The Base Station in Wireless Communications: The ...](#)

Equipped with an electromagnetic wave antenna, often placed on a tall mast, the base station enables communication between mobile terminals ...

## Base Stations

The present-day tele-space is incomplete without the base stations as these constitute an important part of the modern-day scheme of wireless communications. They are ...



### [What Are Base Station Antennas? Complete Guide](#)

In modern telecommunications systems, the base station antenna stands out as an undeniable and crucial component to facilitate our daily ...







## What Are Base Station Antennas? Complete Guide

Base station antennas are also known as cell site antennas and cellular antennas, and they are typically mounted on a tower or rooftop and connected to a base station through ...

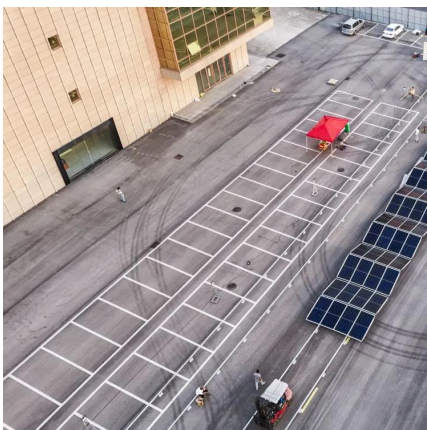
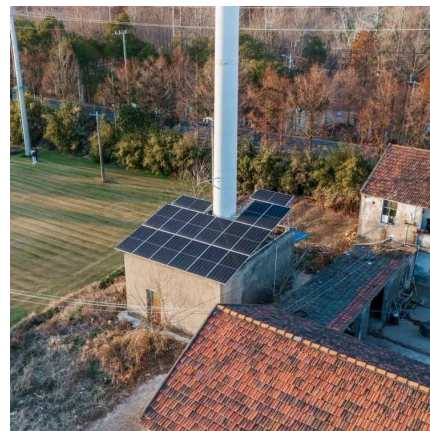


## **What Is the Role of a Base Station in Wireless Communication?**

Base stations are critical components in wireless communication networks, serving as the intermediary between mobile devices and the core network. They play a vital role in ...

## **The Base Station in Wireless Communications: The Key to ...**

Equipped with an electromagnetic wave antenna, often placed on a tall mast, the base station enables communication between mobile terminals (such as mobile phones or ...



## **What Is A Base Station?**

A base station is an integral component of wireless communication networks, serving as a central point that manages the transmission and reception of signals between ...



## Base station

Each base station appears as a single channel on the dispatch center control console. In a properly designed dispatch center with several staff members, this allows each dispatcher to ...



## How to enhance the signal strength and coverage of base stations

In modern communication technology, signal strength and coverage are key factors in ensuring communication quality. Although we usually think that jammers are ...

## Base Stations: The Core and Future of Telecom Networks

At the heart of this connectivity lies a vital piece of telecom infrastructure: the telecom base station. Serving as the backbone of mobile communication networks, base stations are crucial ...



## (PDF) Evolution of mobile base station architectures

The first set of equipment is used in each sector, and consists of the DC-DC regulator, which is the PA that amplifies the transmitted signal, the ...



## 4 types of Base stations

Macro cell, Micro cell, Pico cell and Femto cell are 4 types of base stations in wireless communication networks. Macrocell antennas must be properly ...



## Architecture of a General Cellular Communication System

The Base Transceiver Station (BTS) houses the radio transceivers that interact with the mobile user and receiver and transmit signals to and from the user. It mainly contains ...

## Contact Us

---

For catalog requests, pricing, or partnerships, please visit:  
<https://motheopreprimary.co.za>