

# **What is the grid-connected communication distance of the communication base station inverter**





## Overview

---

A is a network of handheld (cell phones) in which each phone communicates with the by through a local antenna at a cellular base station (cell site). The coverage area in which service is provided is divided into a mosaic of small geographical areas called "cells", each served by a separate low power multichannel and antenna at a base station. All the cell phones within a cell communicate with the system thr.

What is a base station in telecommunications?

In telecommunications, a base station is a fixed transceiver that is the main communication point for one or more wireless mobile client devices. A base station serves as a central connection point for a wireless device to communicate.

What are the characteristics of different communication methods of inverters?

The characteristics of different communication methods of inverters are obvious, and the application scenarios are different. In order to better weave the underlying network of energy digitization and intelligent development, choose the most appropriate communication method according to local conditions.

How does a wireless device communicate with a base station?

When a wireless device, such as a mobile phone, communicates with a base station, the device sends a signal to the base station, which converts the signal into digital form and sends it to the network. Similarly, when the network sends data to the device, the base station converts the digital data into a wireless signal that the device can receive.

What is a base station in a wireless network?

At the heart of wireless communication networks are base stations, which act as the gateway between wireless devices and the network infrastructure. Base stations are responsible for transmitting and receiving data to and from wireless devices, as well as managing network resources and ensuring reliable and efficient communication.



Is a base station a transmitter or broadcast point?

Base stations are generally a transceiver, capable of sending and receiving wireless signals; otherwise, if they only transmitted signals out, they would be considered a transmitter or broadcast point. A base station will have one or more radio frequency (RF) antennas to transmit and receive RF signals to other devices.

What is the difference between a mobile and an interfering base station?

The transmit powers of the mobile and all the base stations (desired and interfering) are the same. 2. All the interfering base stations are at equal distance,  $r$ , from the mobile in question. 3. Neglecting the interference from non-first-tier interferers. 4. The mobile is at the “worst case” position. #, where  $r$  is the cell radius



## What is the grid-connected communication distance of the commun

---



### Base Stations

Backhaul Connection: The backhaul connection links the base station to the core network in the mobile communication system. It provides for ...

### A Field Guide To The North American Communications Tower

On newer cell site systems, you'll see a piece of equipment called a Remote Radio Head (RRH). These are used to distribute the base station equipment between the tower and ...



### [A Field Guide To The North American ...](#)

Each antenna is connected to the base station by several cables. Monopole towers have a conduit down the center to house the cables, but on ...

### [Detailed Analysis of Photovoltaic Inverter](#)

...

By analyzing the communication methods of various types of photovoltaic inverters, we can understand the characteristics of various ...





## What is a base station?

What is a base station? In telecommunications, a base station is a fixed transceiver that is the main communication point for one or more wireless mobile client devices. A base ...



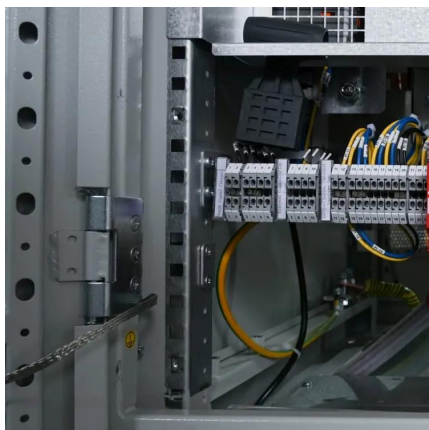
## What Is Base Station in Mobile Communication? - The Heart of ...

At the heart of this system lies the base station, a crucial component that enables seamless communication between mobile devices and the network. In this blog post, we will ...



## Base Station

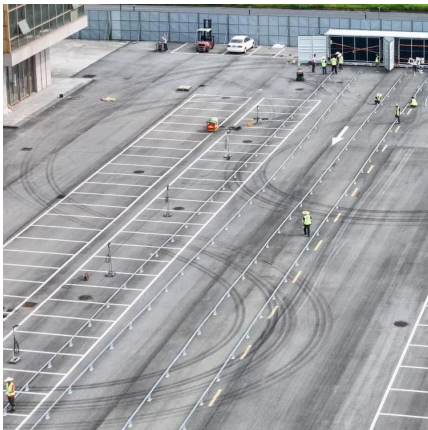
Base Station What is Base Station? A base station is a device that serves as the hub of a wireless communication system. It is typically responsible for transmitting and receiving signals to and ...





## [A Field Guide To The North American ...](#)

On newer cell site systems, you'll see a piece of equipment called a Remote Radio Head (RRH). These are used to distribute the base station ...

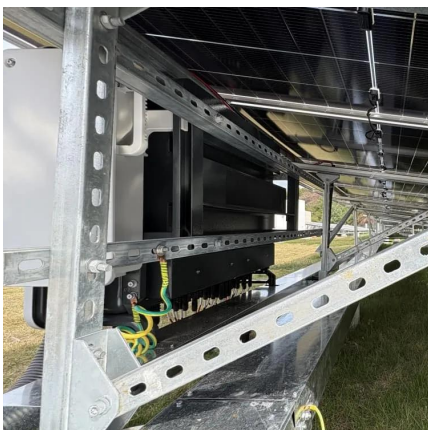


## [Synchronization of the solar inverter with the grid](#)

This article is going to dive into the details of grid synchronization and how solar inverter synchronization plays an important and crucial role in ...

## [Part #1: Introduction to Wireless Communication ...](#)

A mobile maintains air link with a BAsE-Station (BAS) through a CommonAirInterface(CAI). Base-stations are connected to a Mobile Switching Center (MSC) through air or land lines. MSC was ...



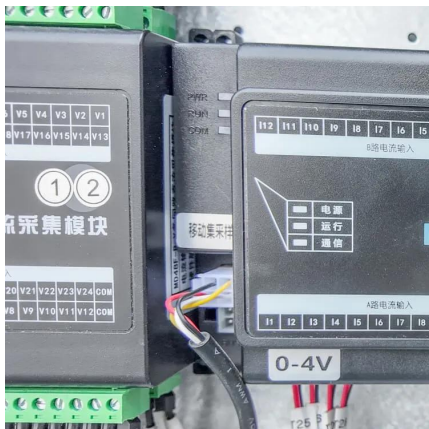
## **Cell site**

The coverage area in which service is provided is divided into a mosaic of small geographical areas called "cells", each served by a separate low power multichannel transceiver and ...



## Inverter communication mode and application scenario

Power line communication (PLC) technology refers to a communication method using power cables to transmit data.



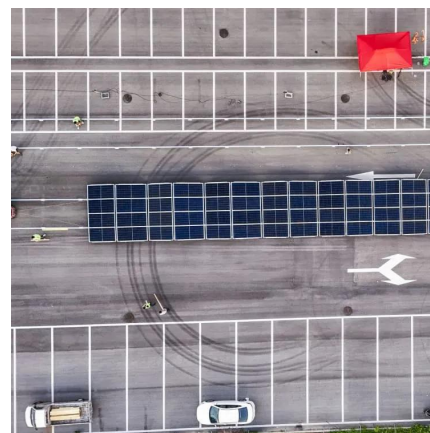
## Base Stations

Backhaul Connection: The backhaul connection links the base station to the core network in the mobile communication system. It provides for the interchange of data between ...



## 17 Off-Grid Communication Options [From High-Tech to Low-Tech!]

How vital are voice and data communication to your off-grid lifestyle? Off-grid communication options are essential for work, study, leisure, and emergency preparedness. ...



## base station in 5g

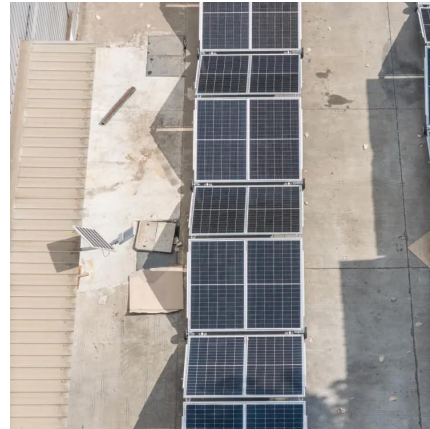
A 5G base station, also known as a gNodeB (gNB), is a critical component of a 5G network infrastructure. It plays a central role in enabling ...





## LoRaWAN Base Station: Your Ultimate Guide to Long ...

The primary role of a LoRaWAN Base Station is to receive data packets from LoRaWAN end-devices (sensors, actuators) within its range and forward these ...



## **Off Grid Communication -- Top Options You Need to Consider**

The Bottom Line: Off grid communication systems offer a reliable and secure way to stay connected in remote locations. From satellite phones to mesh networks and CB radio, ...



## IST 220 chapter 6 Flashcards , Quizlet

Study with Quizlet and memorize flashcards containing terms like Base station, "Associated" with base station, Examples of base stations and more.



## Solar Powered Cellular Base Stations: Current ...

Current estimates suggest that there are 3,20,100 off-grid (i.e. without any grid connectivity) and 7,01,000 bad-grid (i.e. connected to a grid ...

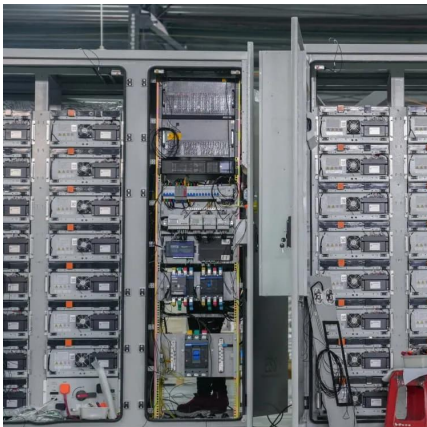






## [Inverter communication methods and applicable ...](#)

The HERF micro inverter supports 2.4G RF and data collector (DCU). The HERF energy storage inverter is connected to the wireless router ...



## [Detailed explanation of inverter communication method](#)

Usually the inverter is connected to the router through a built-in or external WiFi module, and the collected data is transmitted to the inverter company's server.

## Cell site

SummaryOverviewOperationTemporary sitesEmploymentSpy agency setupOff-grid systemsCamouflage

A cellular network is a network of handheld mobile phones (cell phones) in which each phone communicates with the telephone network by radio waves through a local antenna at a cellular base station (cell site). The coverage area in which service is provided is divided into a mosaic of small geographical areas called "cells", each served by a separate low power multichannel transceiver and antenna at a base station. All the cell phones within a cell communicate with the system thr...



## [10 Best Ham Radio Base Station For Long Range ...](#)

In this article, we have described details of



different Ham radio base station that will help you to select the best one based on your needs.

## What Is the Role of a Base Station in Wireless Communication?

Introduction to Base Stations in Wireless Communication Base stations are critical components in wireless communication networks, serving as the intermediary between mobile ...



## RS485 Communication Checklist

3. RS485 Channel: Is the RS485 cable connected to the same RS485 channel (A1/B1) in all inverters (Sungrow recommend the direct wiring method of connection.) Diagram 3 - Uniform ...

## Detailed Analysis of Photovoltaic Inverter Communication ...

By analyzing the communication methods of various types of photovoltaic inverters, we can understand the characteristics of various inverters, which will help us when choosing ...





## BS (Base Station)

A base station (BS) is a key component of modern wireless communication networks, providing the interface between wireless devices and the network infrastructure.

### What is a base station and how are 4G/5G base stations different?

Base station is a stationary trans-receiver that serves as the primary hub for connectivity of wireless device communication.



## Contact Us

---

For catalog requests, pricing, or partnerships, please visit:  
<https://motheopreprimary.co.za>