

Tower solar power station system





Overview

A solar power tower, also known as 'central tower' power plant or 'heliostat' power plant, is a type of solar furnace using a tower to receive focused sunlight. It uses an array of flat, movable mirrors (called heliostats) to focus the sun's rays upon a collector tower (the target). Concentrating Solar Power (CSP) systems are seen as one viable solution for renewable, pollution-free energy. Early desi. CostIn 2021, the US (NREL) estimated the cost of electricity from.

- Some concentrating solar power (CSP) towers are air-cooled instead of water-cooled, to avoid using limited desert water
- Flat glass is used instead of the more expensive curved glass.

There is evidence that such large area solar concentrating installations can burn birds that fly over them. Near the center of the array, temperatures can reach 550 °C (1,022 °F) which, with the solar flux itself, is enough to i.



Tower solar power station system



Solar Power Tower

A solar power tower is defined as a system consisting of multiple heliostats that concentrate sunlight onto a receiver located at the top of a tower, where a working fluid is heated to ...

Solar Tower

1.1.3 Solar tower A solar tower (or central system) is a focal point concentrating technology that is used mainly in power production applications with high operating temperature levels [42]. It is ...



What Is a Solar Tower and How Does It Work?

Solar towers are sometimes also called heliostat power plants because they use a collection of movable mirrors (heliostats) laid out in a field to gather and focus the sun at the ...



Solar updraft tower

Schematic presentation of a solar updraft tower
The solar updraft tower (SUT) is a design concept for a renewable-energy power plant for generating electricity from low-temperature solar heat. ...



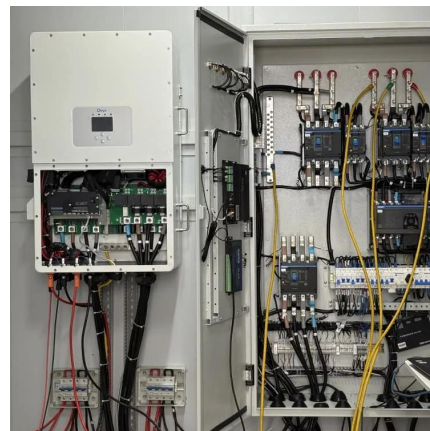
Solar Power Tower

Solar power towers generate electric power from sunlight by focusing concentrated solar radiation on a tower mounted heat exchanger (receiver). The system uses hundreds to ...



Solar Tower, Seville

The first two power plants to be brought into operation were the PS10, the world's first commercial thermoelectric solar tower, and Sevilla PV, ...



World's First Dual-Tower Concentrated Solar Power ...

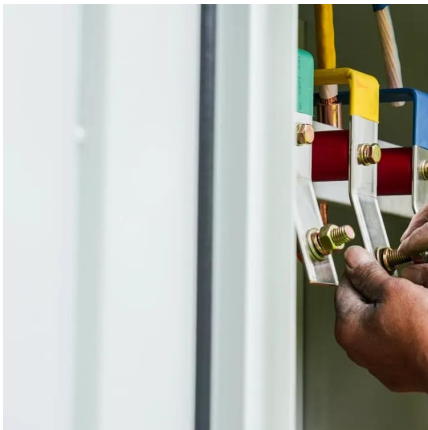
The new CSP system, which is expected to come online later this year, will join surrounding photovoltaic panels and wind turbines at the facility ...





Solar Power Tower

Thelar So One thermal storage system stored heat from oil as the heat-transfer plant's fluid. power-generation The system extended capability heat for rating gene low-grade steam for ...



Modeling and simulation of heliostats field in solar power tower

With the widespread use and preliminary mature of solar energy generation technology, the improvement of generating efficiency has become a vital technical target. For the tower-solar ...

What Is a Solar Tower and How Does It Work?

This overview will focus on the central receiver, or "power tower" concentrating solar power plant design, in which a field of mirrors - heliostats, track the sun throughout the day and year to ...



Concentrated solar power

A solar power tower at Crescent Dunes Solar Energy Project concentrating light via 10,000 mirrored heliostats spanning thirteen million sq ft (1.21 km²). The ...



Global optimization of solar power tower systems using a Monte ...

A Solar Power Tower (SPT) system is a complex set composed of several different subsystems. It consists of a heliostat field, tower, receiver, heat transport system, power ...



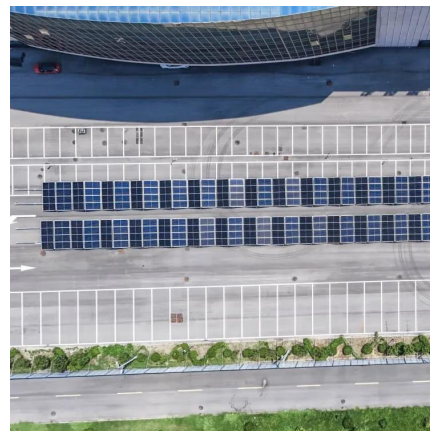
Solar Power Tower

Solar power towers generate electric power from sunlight by focusing concentrated solar radiation on a tower mounted heat exchanger (receiver).

...

How the world's largest concentrated solar power project works

How did this country manage to build the largest concentrated solar power plant that generates electricity even at night?



Solar power tower

A solar power tower, also known as 'central tower' power plant or 'heliostat' power plant, is a type of solar furnace using a tower to receive focused sunlight. It uses an array of flat, movable

...



[Power Tower System Concentrating Solar-Thermal ...](#)

In power tower concentrating solar power systems, a large number of flat, sun-tracking mirrors, known as heliostats, focus sunlight onto a receiver at the top ...



[Solar power tower , PPT , Power and Energy Industry ...](#)

The document presents a literature review on solar power tower technology, highlighting various research papers that discuss objectives, methodologies, ...

Solar Power Tower

A Solar Power Tower is a solar thermal power plant that uses an array of flat, movable mirrors to focus sunlight onto a tower covered with water pipes. The heated water ...



What is a Solar Power Tower?

Looking for a comprehensive guide on solar tower power plants? Check here for detailed information on types, operations, costs, and applications.





Solar Power Plants: Types, Components and Working Principles

The layout of a photovoltaic power plant depends on several factors, such as site conditions, system size, design objectives, and grid requirements. However, a typical layout ...



An Overview of Heliostats and Concentrating Solar Power ...

This overview will focus on the central receiver, or "power tower" concentrating solar power plant design, in which a field of mirrors - heliostats, track the sun throughout the day and year to ...

10.3. Central Receiver Systems

A typical example of such a system is a solar power tower system, which consists of multiple tracking mirrors (heliostats) positioned in the field around a main external receiver installed on ...



ESTELA , Central Receiver

Central receiver (or power tower) systems use a field of distributed mirrors - heliostats - that individually track the sun and focus the sunlight on the top of ...



Solar Power Tower

A Solar Power Tower is a solar thermal power plant that uses an array of flat, movable mirrors to focus sunlight onto a tower covered with water ...



158GWh! SUPCON SOLAR Delingha 50MW Molten ...

The matching between the Solar Block, TESS and SGS Block, and turbine and generator system is the prerequisite to determine the performance of the CSP ...



Solar power tower

A solar power tower is a system that converts energy from the Sun - in the form of sunlight - into electricity that can be used by people by using a large scale ...



Solar Power Tower: Use Molten Salt as an Energy ...

Advantages of solar tower power plant Solar towers are non-polluting, emission-free solar power plants that can run continuously for ...



Power Tower System Concentrating Solar-Thermal Power Basics

In power tower concentrating solar power systems, a large number of flat, sun-tracking mirrors, known as heliostats, focus sunlight onto a receiver at the top of a tall tower.



Contact Us

For catalog requests, pricing, or partnerships, please visit:
<https://motheopreprimary.co.za>