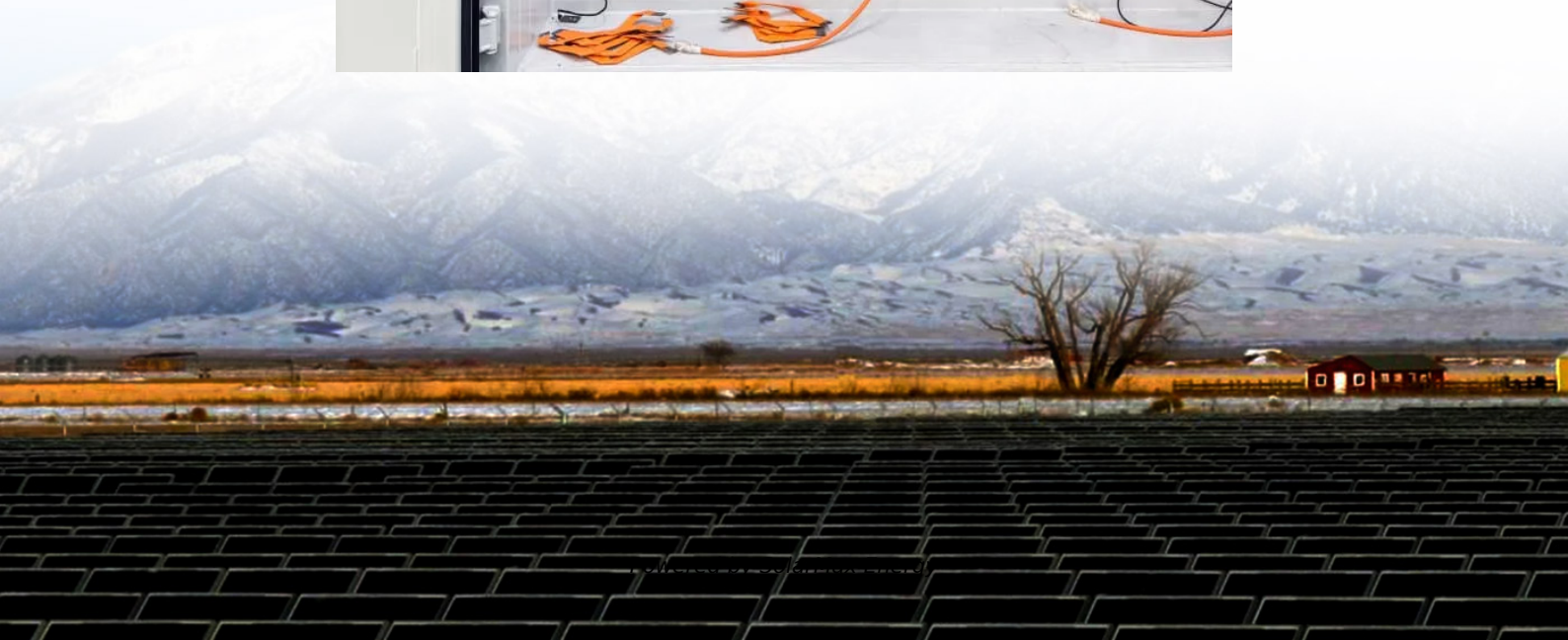


# **Rooftop photovoltaic panels series and parallel connection**





## Rooftop photovoltaic panels series and parallel connection

---



### The Difference Between Solar Panels In Series vs. In ...

The difference between wiring your solar panels in series or parallel depends on the output you need from your system. Wiring in series is easier ...

### [Connecting Solar Panels in Series Vs Parallel](#)

Connecting PV panels in series increases the voltage but amps remain the same, but in parallel connection, current and power output ...



### [The Complete Guide for Solar Panel Connectors](#)

For the series-parallel connection, you apply what you just learned to connect two or more strings of solar panels in series into a parallel ...



### [Mixing solar panels - Dos and Don'ts](#)

There are two main types of connecting solar panels - in series or in parallel. You connect solar panels in series when you want to get a higher voltage. If you, however, need to get higher ...



### [Series vs Parallel Solar Panel Wiring Basics](#)

Series vs Parallel Solar Panel Wiring Basics - Volts, Amps, Cost & More Explained The Solar Lab 48.5K subscribers Subscribed



### [Connecting Multiple Solar Panels - Series vs. Parallel](#)

Determine the best way of connecting multiple solar panels with our description of design options of the series and parallel connections of solar ...



### [How to wire solar panels , Essentra Components UK](#)

From solar panel wiring basics to more complex photovoltaic wiring diagrams: a solar panel wiring guide to series and parallel.







## [Your Guide to Series vs. Parallel Solar Panels](#)

Wondering how to wire solar panels using parallel and series connections? Check our latest guide to series vs. parallel solar panels to learn ...



## **Understanding PV Wiring in Series, Parallel and Polystring**

Understanding PV Wiring in Series, Parallel and Polystring by Ronnie Raxter (guest post), 5. Mar 2015, 8 Comments Module stringing and the question of how many and in which ...

## **The Ultimate Guide to Solar Panel Configurations: Series vs.**

When designing your solar panel system, it's essential to accurately calculate the voltage and current output of your solar panel in series vs parallel, and parallel configurations.



## [Solar Panel Series vs Parallel: What's The Difference](#)

Discover the optimal choice between solar panel series vs parallel configurations. Learn how to maximize efficiency and output with our comprehensive guide on solar panel series vs parallel ...



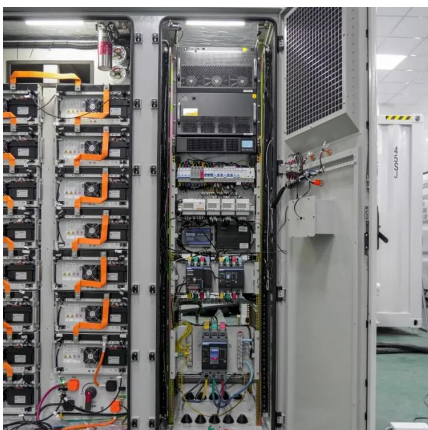
## How to connect solar panels together: Series, parallel, combo

Parallel connections is optimal for smaller setups like RV and boat systems, offering excellent shade tolerance since panels operate independently, though they require ...



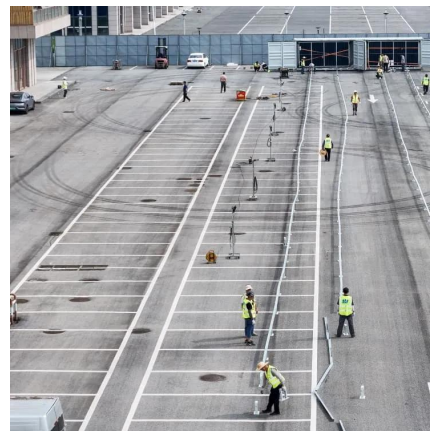
## A Comprehensive Guide to Series, Parallel, and Series-Parallel

In this ultimate guide, we explore series wiring solar panels, parallel wiring solar panels, and series-parallel wiring, including pros, cons, and best applications.



## [How to Wire Solar Panels to Inverter: Complete Guide](#)

How to Wire Solar Panels to Inverter: Connect them in series, parallel, or a combination of both, depending on the voltage & current output.



## Solar Panels

Most single solar panels in the 100 - 200 watt range have voltages in the 18-20 volt range. If you wire in parallel, this means you'll only have a range of 6 volts ...



## Connecting Solar Panels in Series or in Parallel?

Parallel wiring increases the sum output amperage of a solar panel array while keeping the voltage the same. The choice you make can have a significant impact on your system's overall ...



## Solar Panel Wiring Types and Factors to Consider

Solar Panel Wiring in Australia: Types & Factors to Consider Explore the essentials of solar panel wiring in Australia, from choosing the ...

## Connecting Solar Panels in Series Vs Parallel

Connecting PV panels in series increases the voltage but amps remain the same, but in parallel connection, current and power output increase. For connecting panels in either ...



## Should Solar Panels Be Connected In Series or Parallel?

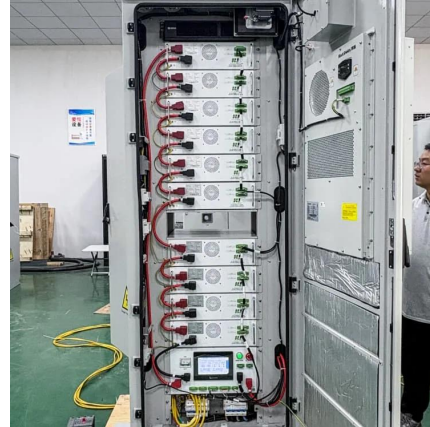
Should Solar Panels Be Connected In Series or Parallel? When designing a solar power system, choosing the right configuration for connecting your solar panels is critical to ...





## Should you put your solar panels in series or parallel?

Series connections produce more energy in ideal conditions Solar panels wired in parallel are better protected against obstructions Most solar ...

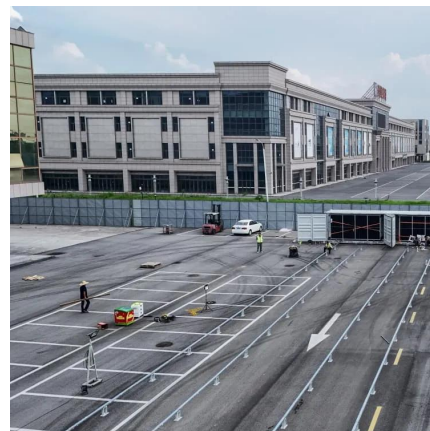


## Solar Panel Series vs Parallel: What's The Difference

Discover the optimal choice between solar panel series vs parallel configurations. Learn how to maximize efficiency and output with our comprehensive guide on ...

## Connecting Solar Panels in Series or in Parallel?

Parallel wiring increases the sum output amperage of a solar panel array while keeping the voltage the same. The choice you make can have a significant ...



## **Series vs. Parallel , Renogy US**

Learn about series, parallel, and series-parallel connections in solar panel systems. Understand why each connection type is used and how to set up your system accordingly. Discover the ...



## [Series Vs Parallel Solar Panels: Complete Wiring ...](#)

Learn when to wire solar panels in series vs parallel. Complete guide with diagrams, calculations, and real-world performance data. Make the ...



## **Series Vs Parallel Solar Panels: Complete Wiring Guide 2025**

Learn when to wire solar panels in series vs parallel. Complete guide with diagrams, calculations, and real-world performance data. Make the right choice for your system.



## **What is a Series or Parallel Connection in Solar Panels?**

Understanding series and parallel connections is the foundation of solar PV system design. Series wiring adds voltage, while parallel wiring adds current--each with its ...



## **Solar Wiring Basics: How to Wire Panels In Series And Parallel**

We will stick to the basics in this video using an EcoFlow Delta 2 and showing the options you have for wiring in series and parallel into the solar charge input.







## The Ultimate Guide to Solar Panel Configurations: Series vs. Parallel

When designing your solar panel system, it's essential to accurately calculate the voltage and current output of your solar panel in series vs parallel, and parallel configurations.



### Shading Solar Panels - Series or Parallel?

What is the effect of shaded PV cells in series and parallel? The problem arises if you have multiple solar panels. Multiple solar panels can be connected in series or parallel. ...

## Contact Us

---

For catalog requests, pricing, or partnerships, please visit:  
<https://motheopreprimary.co.za>