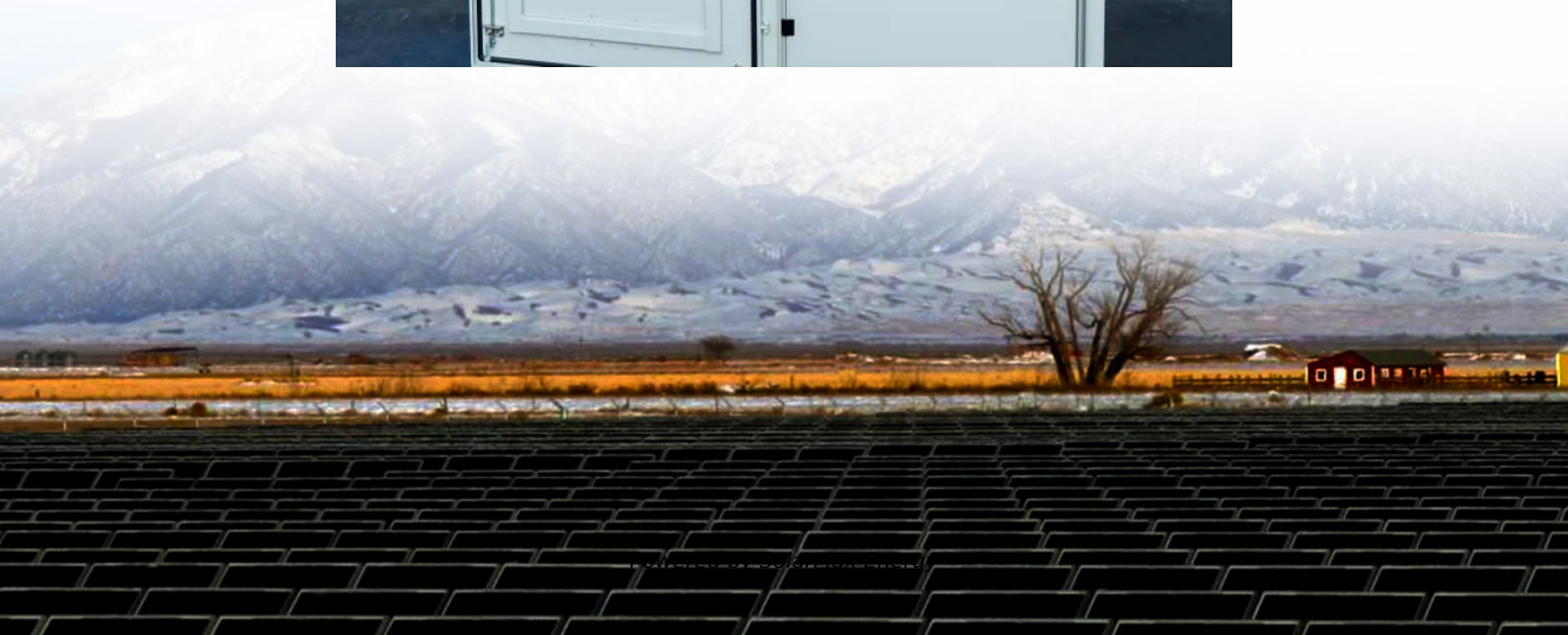


Next to the mobile communication base station





Overview

What is a mobile phone base station?

A mobile phone base station provides coverage to a geographic area known as a “cell”. Cells are aligned next to each other in a similar pattern to a honeycomb, and it is for this reason that mobile phone networks are sometimes referred to as “cellular” networks.

What are base stations & cell towers?

Base stations and cell towers are critical components of cellular communication systems, serving as the infrastructure that supports seamless mobile connectivity. These structures facilitate the transmission and reception of signals between mobile devices and the wider network, enabling voice calls, text messages, and data services.

What is a base station in a cellular network?

Base Stations A base station, often housed within a cell site, is the central point in a cellular network where signals are transmitted and received from mobile devices. It consists of electronic equipment, including transceivers, antennas, and signal processors, that manage the communication within a specific geographical area or “cell.”.

Who owns cell sites & base stations?

The cell sites and base stations are owned by mobile network operators such as Vodafone, T-Mobile, Rogers, AT&T, Verizon etc. The base stations represent the radio part of the mobile network, and one base station typically contains multiple cells which operate on specific radio frequencies.

What is the difference between a base station and a cell?

They are usually on a radio mast, tower, or any other elevated structure. A cell in a cellular network is created through the cell tower or cell site. On the other hand, the base station is a land station in the land mobile service. The term is



used in wireless computer networking, mobile telephony, and wireless communications on the land.

How do base stations work?

Base stations use antennas mounted on cell towers to send and receive radio signals to and from mobile devices within their coverage area. This communication enables users to make voice calls, send texts, and access data services, connecting them to the wider world. Network Management and Optimization

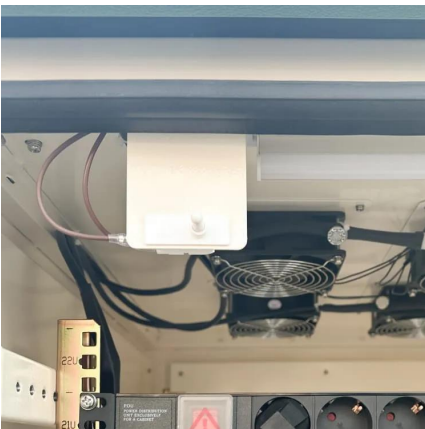


Next to the mobile communication base station



Basestation

A base station (BS) is defined as a fixed communication facility that manages radio resources for one or more base transceiver stations (BTSs), facilitating radio channel setup, frequency ...



Uplink MIMO Communications With RIS-Integrated Base Station: ...

Reconfigurable intelligent surface (RIS) has gained significant momentum as a cost-effective and energy-efficient technology to enable the next generation of mobile communications. In

Base Stations

Backhaul Connection: The backhaul connection links the base station to the core network in the mobile communication system. It provides for the interchange of data between ...



A super base station based centralized network architecture for ...

In future 5G mobile communication systems, a number of promising techniques have been proposed to support a three orders of magnitude higher network load compared to what ...



this ...



[China claims first 5G base stations for military use](#)

The 5G base station was developed by China Mobile Communications Group and the Chinese People's Liberation Army China has ...



BTS (base station transceiver)

BTS, or Base Station Transceiver, is a critical component in modern mobile communication networks. BTS is responsible for transmitting and receiving wireless signals ...



[Base Stations and Cell Towers: The Pillars of Mobile ...](#)

Base stations use antennas mounted on cell towers to send and receive radio signals to and from mobile devices within their coverage area. ...





Base Stations

Backhaul Connection: The backhaul connection links the base station to the core network in the mobile communication system. It provides for ...



What Is the Role of a Base Station in Wireless Communication?

Base stations are critical components in wireless communication networks, serving as the intermediary between mobile devices and the core network. They play a vital role in ...

The Central Role of Base Stations in Two-Way Radio ...

What is a Base Station in Two-Way Radio Communication? A base station in the context of two-way radio communication refers to a fixed, central hub that ...



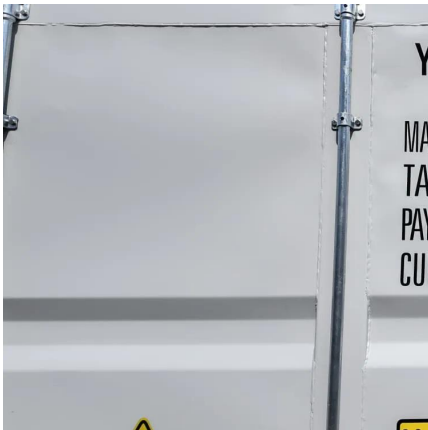
Base station

In professional two-way radio systems, a base station is used to maintain contact with a dispatch fleet of hand-held or mobile radios, and/or to activate one-way ...



Glossary: Base station (in communications)

[A mobile phone base station is] a transmission and reception station in a fixed location, consisting of one or more receive/transmit antenna, microwave dish, and electronic circuitry, ...



ch 9 quiz digital Flashcards , Quizlet

A (n)___ handoff occurs when a cellular communication is conditionally handed off from one base station to another and the mobile equipment is simultaneously communicating with multiple ...

Unraveling the Mysteries of Cell Towers and Base ...

In the ever-evolving landscape of mobile communications, understanding the intricacies of cell sites, cell towers, and base stations is crucial. These terms, ...



EMF

A mobile phone base station provides coverage to a geographic area known as a "cell". Cells are aligned next to each other in a similar pattern to a honeycomb, and it is for this reason that ...



What Is A Base Station?

A base station is an integral component of wireless communication networks, serving as a central point that manages the transmission and reception of signals between ...



mobile communication base stations

As the mobile communication landscape evolves, the focus on enhancing user experience through lower latency and higher data rates will continue to drive innovation and ...



Cell sites and cell towers in a mobile cellular network

Each cell has its own base station, enabling devices to connect without interruption. This design allows seamless handovers --the process ...



transceiver station

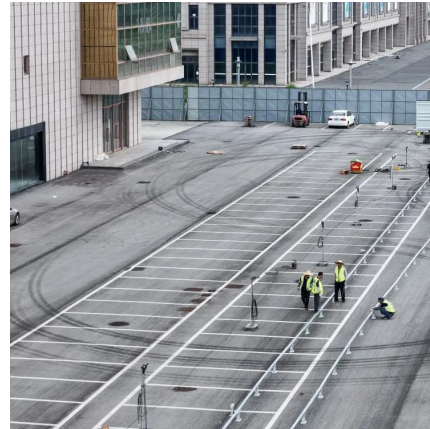
A transceiver station, also known as a base station or cell site in the context of mobile communications, is a critical component in wireless communication networks. Its ...





Types and Applications of Mobile Communication ...

In terms of form, future base stations will develop in three directions: macro base stations with higher performance and integration, micro ...



Cell sites and cell towers in a mobile cellular network

Cell towers or radio base stations are tall masts carrying cellular antennas that you can spot from a distance. A cellular tower can have many antennas installed on it, and the ...

base station

A communication base station is a necessity that transmits and receives mobile communication waves, but it generates enormous electromagnetic waves, so civil complaints ...



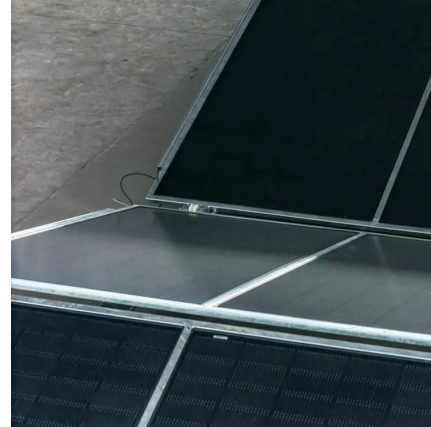
Types and Applications of Mobile Communication Base Stations

In terms of form, future base stations will develop in three directions: macro base stations with higher performance and integration, micro base stations with smaller size, and ...



EMF

A mobile phone base station provides coverage to a geographic area known as a "cell". Cells are aligned next to each other in a similar pattern to a honeycomb, ...



Base Station

A base station refers to a fixed communication device that serves as a hub for connections in a specific area, such as a wireless telephone system in a cellular network. It ...

What Is A Base Station?

A base station is an integral component of wireless communication networks, serving as a central point that manages the transmission and ...



Cellular Network Infrastructure: Key Components & Functions

Each cell has its own base station, enabling devices to connect without interruption. This design allows seamless handovers --the process that ensures your call or ...



EMF

Some base stations have radio communications dishes (shaped like a drum) that connect the base station to the rest of the base station network. top What are 2G and 3G networks? 3G, or ...

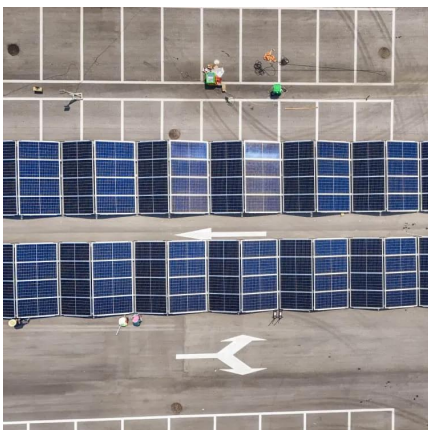


Unraveling the Mysteries of Cell Towers and Base Stations

In the ever-evolving landscape of mobile communications, understanding the intricacies of cell sites, cell towers, and base stations is crucial. These terms, often used interchangeably, play ...

Base Stations and Cell Towers: The Pillars of Mobile Connectivity

Base stations use antennas mounted on cell towers to send and receive radio signals to and from mobile devices within their coverage area. This communication enables ...



[Mobile Phone Base Stations EMF / Health Fact Pack](#)

When a mobile phone is switched on, it responds to specific control signals from nearby base stations. When it has found the nearest base station in the network to which it subscribes, it ...



Contact Us

For catalog requests, pricing, or partnerships, please visit:
<https://motheopreprimary.co.za>