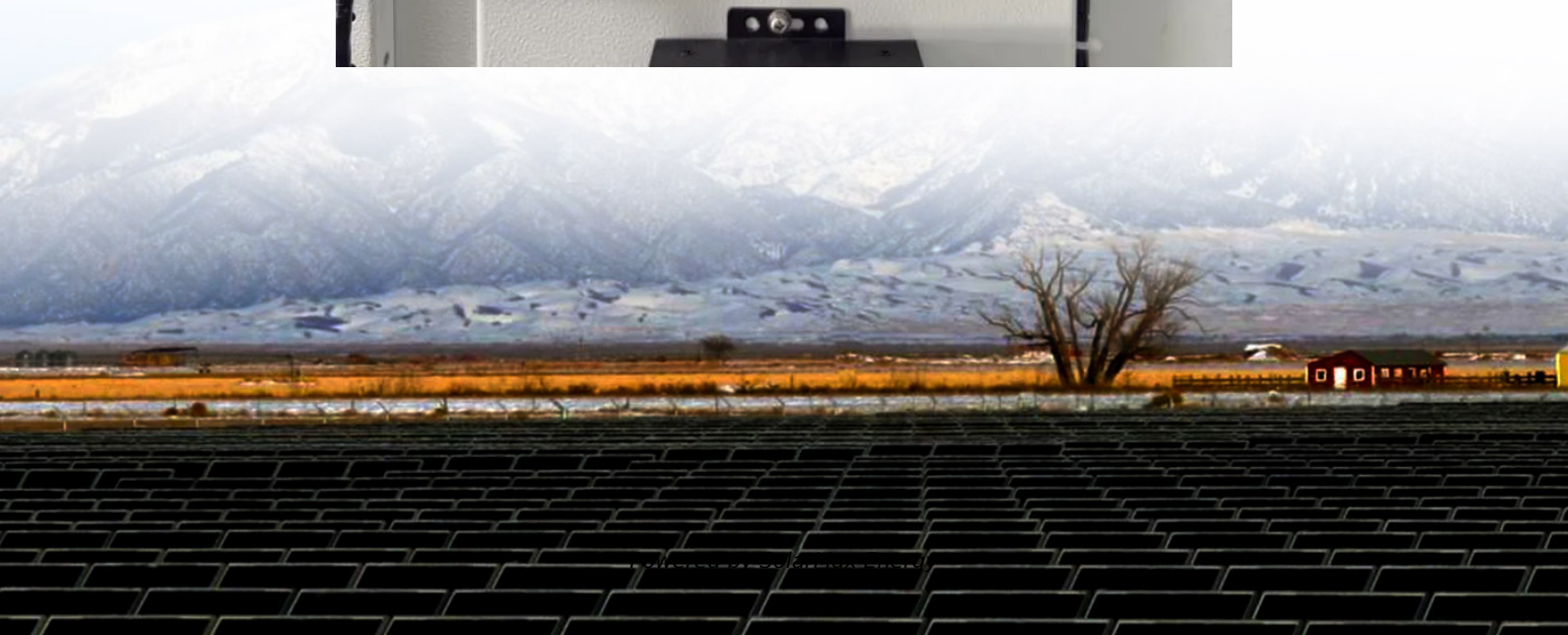


Multiple lithium battery packs connected in series





Overview

Connecting multiple lithium batteries into a string of batteries allows us to build a battery bank with the potential to operate at an increased voltage, or with increased capacity and runtime, or both.

Lithium battery banks using batteries with built-in Battery Management Systems (BMS) are created by connecting two or more batteries together to support a.

The primary function of a BMS is to ensure that each cell in the battery remains within its safe operating limits, and to take appropriate action to prevent the.

The primary purpose of a BMS is to interrupt the charge and discharge process if cell and battery voltage, cell and battery current and cell and BMS temperatures.

Lithium batteries are connected in series when the goal is to increase the nominal voltage rating of one individual lithium battery - by connecting it in series strings.



Multiple lithium battery packs connected in series



batteries

Let's assume I am going to build a Li-ion battery pack with 12 18650s, where I connect four cells together in parallel and then the three sets of four in series. ...

Lithium Series, Parallel and Series and Parallel

Connecting multiple lithium batteries into a string of batteries allows us to build a battery bank with the potential to operate at an increased voltage, or with increased capacity and runtime, or both.



How to connect in series and parallel - Batelithium

To increase the total voltage output of a battery pack, the series connection of LiFePO4 batteries is commonly used. This involves connecting multiple batteries in sequence, where the positive ...



Battery Series and Parallel Connection Calculator

Battery Series and Parallel Connection Calculator
Battery Voltage (V): Battery Capacity (Ah):
Number of Batteries: Calculate Linking multiple
batteries either in series or ...



How to Connect Lithium Batteries in Series and Parallel?

In this article, we'll explore the basics and provide detailed, step-by-step instructions on how to connect lithium batteries in series, parallel, and series-parallel configurations.



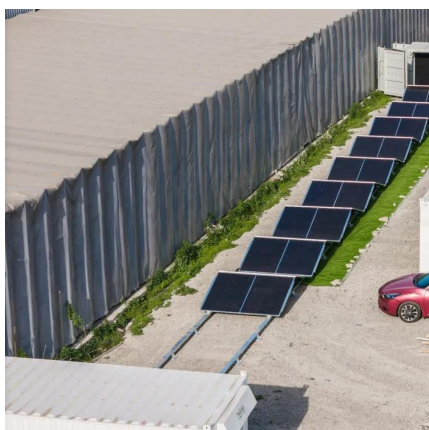
How to Connect Lithium Batteries in Series and Parallel?

In this article, we'll explore the basics and provide detailed, step-by-step instructions on how to connect lithium batteries in series, parallel, and ...



Connecting batteries in parallel - BatteryGuy Knowledge Base

There are two ways to wire batteries together, parallel and series. The illustration below show how these wiring variations can produce different voltage and amp hour outputs. ...





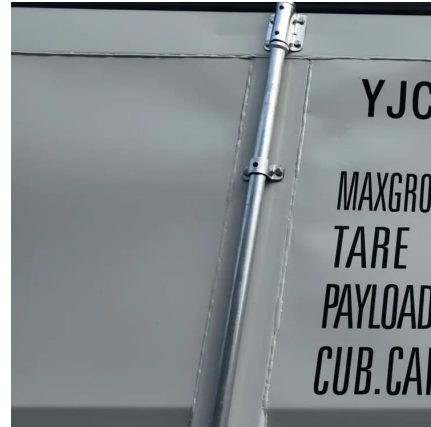
[How to Put 2 Battery Packs Together?](#)

In this comprehensive guide, as a professional lithium battery pack manufacturer, I'll explain step-by-step how to properly connect two battery packs in series or parallel to create a ...



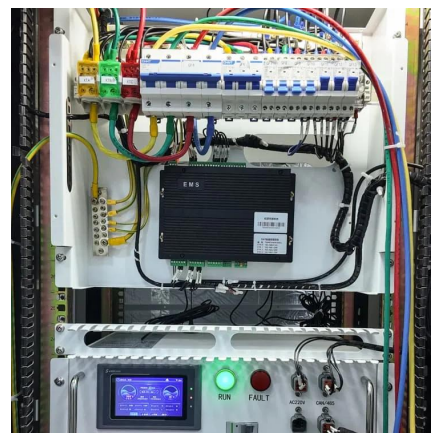
Ultimate Guide of LiFePO4 Lithium Batteries in Series & Parallel

Unlock the ultimate guide to using LiFePO4 lithium batteries in series and parallel. Learn configurations, benefits, and tips for optimal performance!



Can You Link Battery Packs? Understanding Series Vs. Parallel

Can You Link Battery Packs Together? Yes, you can link battery packs together. However, it is important to consider how you connect them to avoid potential issues. ...



Lithium Battery Series & Parallel Operation , Fact Sheets

Battery packs are designed by connecting multiple cells in series; each cell adds its voltage to the battery's terminal voltage. Figure 1 below shows a typical EarthX 13.2V LiFePO4 starter ...



What are the implications of connecting lithium battery packs in ...

The concern with series-connected batteries of any type is uneven charge/discharge rates within the string of cells. This can cause overcharging of some cells, ...



[Charging LiFePO4 Batteries In Parallel And Series Guide](#)

In conclusion, you must have got all the information around lithium batteries and charging lithium phosphate batteries in parallel and series. While LiFePO4 batteries are ...

[How to connect in series and parallel - Batelithium](#)

To increase the total voltage output of a battery pack, the series connection of LiFePO4 batteries is commonly used. This involves connecting multiple ...



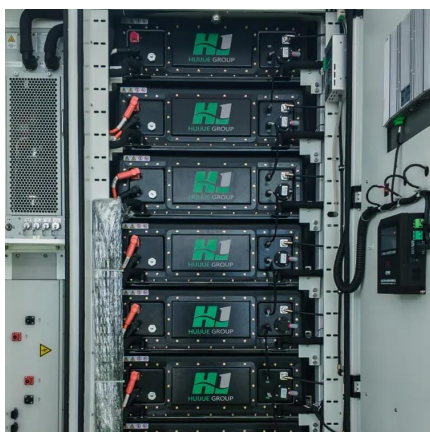
Battery Packs In Series Or Parallel: Key Differences And Wiring

Connecting battery packs in series increases the output voltage while keeping the capacity the same. In contrast, wiring them in parallel boosts the total capacity without ...



Can Batteries with the Same Voltage Be Connected in Series?

When designing or expanding battery-powered systems, a common question arises: Can two battery packs with the same voltage be connected in series? The short answer is yes, but with ...



I have two lithium battery packs with separate BMS, Can I connect ...

I have two lithium battery packs with separate BMS, Can I connect the packs in parallel, will the BMS get damaged or will something happen? 12v 10ah battery pack, I have ...

What are the implications of connecting lithium battery packs in series?

The concern with series-connected batteries of any type is uneven charge/discharge rates within the string of cells. This can cause overcharging of some cells, ...



Can You Link Battery Packs? Understanding Series Vs. Parallel

Yes, you can link battery packs together. However, it is important to consider how you connect them to avoid potential issues. Connecting battery packs in series increases the ...



Batteries in Series vs Parallel: Which is Better?

Do you know the difference between batteries in series vs parallel? Find out how to connect batteries in series or parallel & discover which one's best for you!



How to Connect Multiple Rack Lithium Batteries in Series or ...

Connecting rack lithium batteries involves series (voltage addition) or parallel (capacity addition) configurations. Series connects positive to negative terminals, boosting ...

Everything About Lithium Battery Series & Parallel

Learn how to safely connect lithium batteries in series and parallel. Avoid risks, extend battery life and build reliable power systems with our expert guide.



[Step Guide] How to Solder Multiple Lithium Batteries?

Learn step-by-step how to solder lithium batteries in series or parallel safely and effectively with this detailed, hands-on guide.



[How to Wire 12V Batteries in Series & Parallel \(w/ ...](#)

Learn how to wire batteries in series, parallel, and series-parallel with our step-by-step tutorial. Increase your battery voltage and amp hour ...



[Everything About Lithium Battery Series & Parallel](#)

Learn how to safely connect lithium batteries in series and parallel. Avoid risks, extend battery life and build reliable power systems with ...

[How Do You Balance Lithium Battery Packs In Series?](#)

To balance lithium batteries in series, you would need to charge the batteries individually to the same charge voltage. Unlike cells in series that ...



[All Things You Need to Know about Lithium Battery ...](#)

It is easily to answer" Why lithium cells need parallel and series?" As we have explained above, Due to the limited voltage and capacity of single cells, in ...



Contact Us

For catalog requests, pricing, or partnerships, please visit:
<https://motheopreprimary.co.za>