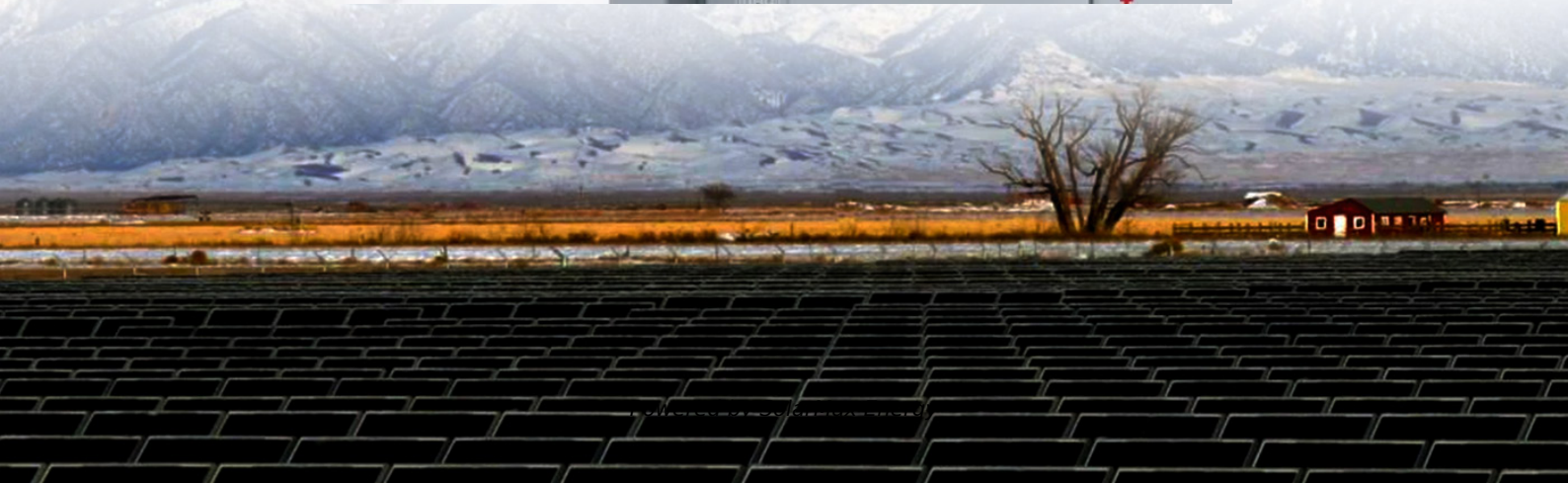


# **How much electricity does the base station wind power supply consume**





## Overview

---

How much energy does a wind turbine produce?

There are over 70,000 utility-scale wind turbines installed in the U.S. Based on a standard capacity factor of 42%, the average turbine generates over 843,000 kWh per month. However, there's no black-and-white answer to how much energy a wind turbine produces, as energy output varies depending on turbine type and location.

How much energy does a commercial wind farm produce?

Commercial wind farms rely on utility-scale 1MW turbines. A typical 1MW wind turbine generates about 3 million kilowatt hours of electricity yearly. A 1MW turbine at full capacity produces 1 megawatt-hour (MWh) of energy per hour. Ground capacity factors usually range between 25-40%.

What is wind power & how does it work?

Wind power or wind energy is a form of renewable energy that harnesses the power of the wind to generate electricity. It involves using wind turbines to convert the turning motion of blades, pushed by moving air (kinetic energy) into electrical energy (electricity).

How many kilowatts can a wind turbine power a home?

A single onshore wind turbine that can handle 2-3 megawatts pumps out about 6 million kilowatt hours (kWh) of electricity each year. This much power keeps roughly 1,500 average homes running [-3] [-4]. GE's huge Haliade-X 13 MW offshore turbine shows even more impressive numbers – one spin of its blades can power a UK home for over two days.

How does distributed wind energy work?

They can be owned and run by a utility company that then sells the power the plant makes to users, like homeowners, who connect to the electrical grid. Distributed wind energy describes wind energy projects that serve local



energy demand generating on-site electricity for homes, schools, businesses, and farms.

Can wind turbines be used as a distributed energy resource?

Wind turbines used as a distributed energy resource can be connected at the distribution level of an electricity delivery system (or in off-grid applications) to serve on-site energy demand, or support operation of local electricity distribution networks.



## How much electricity does the base station wind power supply cons

---

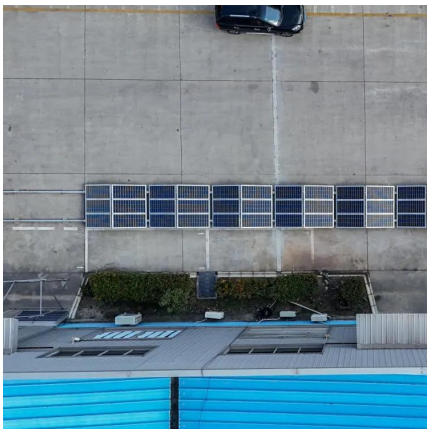
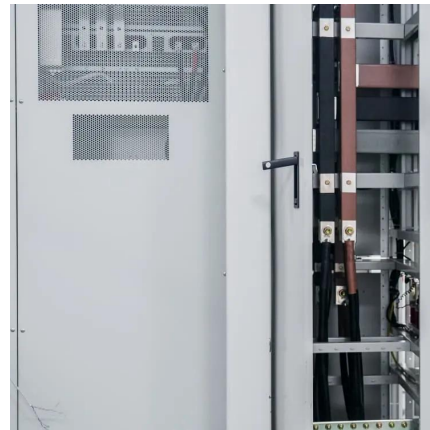


### Power

Power is used in base building. Power, or electrical power, is a resource in Base building. From v2.03, power is required for some equipment. Electricity is ...

### National Wind Watch , The Grid and Industrial Wind Power

Wind power has no effect on base load. However, since base load providers can not be ramped down, if wind turbines produce power when there is no or little peak load, the extra electricity ...



### [How Much Energy Does a Wind Turbine Produce?](#)

U.S. wind turbines produce about 434 billion kilowatts (kWh) of electricity a year, and it only takes an average of 26 kWh of energy to power an entire home for ...

### [5G base stations use a lot more energy than 4G base ...](#)

A typical 5G base station consumes up to twice or more the power of a 4G base station, writes MTN Consulting Chief Analyst Matt Walker in a ...



### Energy consumption in wind facilities

Large wind turbines require a large amount of energy to operate. Other electricity plants generally use their own electricity, and the difference between the amount they generate and the ...



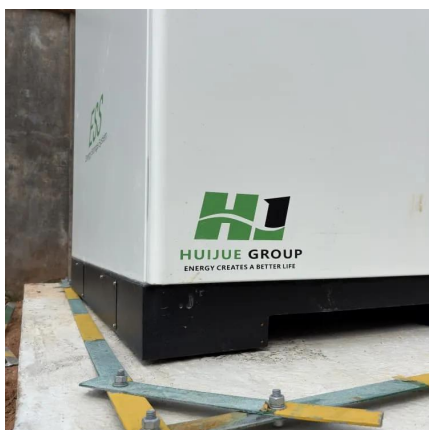
### How Much Energy Does a Wind Turbine Produce?

U.S. wind turbines produce about 434 billion kilowatts (kWh) of electricity a year, and it only takes an average of 26 kWh of energy to power an entire home for a day.



### Data Center Power: A Comprehensive Overview of ...

Data center power supply relies on an efficient distribution system that includes backup procedures to ensure uninterrupted service across all ...

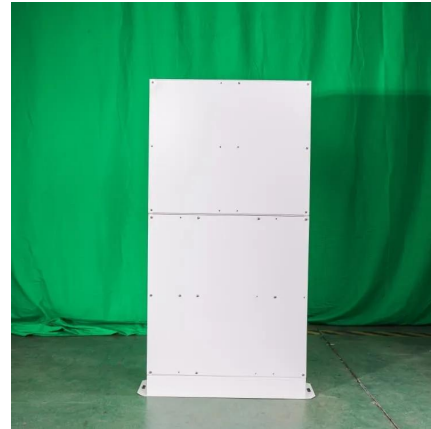






## How Many Kwh Does a Wind Turbine Produce per Day?

Discover the daily energy potential of wind turbines, ranging from 172 kWh to 26.1 MW, and find out which factors influence their electricity ...

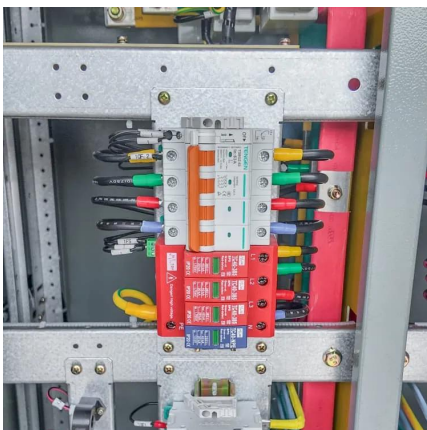


## **Oregon State Energy Profile**

Oregon Quick Facts In 2024, hydroelectric power accounted for about 41% of Oregon's total electricity net generation, and all renewable sources combined produced about ...

## **How Much Electricity Does A Wind Turbine Need To Operate**

The electricity output of wind turbines is determined by numerous factors including wind speed, system size, and efficiency. Most onshore wind turbines have a capacity of ...



## U.S. Energy Information Administration

In 2023, natural gas-fired power plants accounted for almost three-fifths of New York's generating capacity and provided 46% of the state's electricity net generation, ...



## Wind Energy , Department of Energy

4 days ago· Wind power is the nation's largest source of renewable energy, with more than 150 gigawatts of wind energy installed across 42 U.S. States and ...



### [Consumption of Electricity by Wind Turbines \[AWEO \]](#)

Large wind turbines require a large amount of energy to operate. Other electricity plants generally use their own electricity, and the difference between the amount they generate and the ...

### [How much energy will AI really consume? The good, ...](#)

Each facility is likely to consume the same amount of electrical power as tens of thousands of residential homes, potentially driving up costs ...



### **[No Spoilers] what actually uses base energy? : r/subnautica**

I haven't been able to find an answer to this anywhere, but what actually drains energy from a base? For instance does each compartment have a low power draw for lights/O2? Or are ...



## [Power Consumption Calculator: How To Calculate ...](#)

The power consumption calculator calculates how units of electricity (kilowatt-hours or kWh) a device draws per hour, per day, per week, and month. How to ...

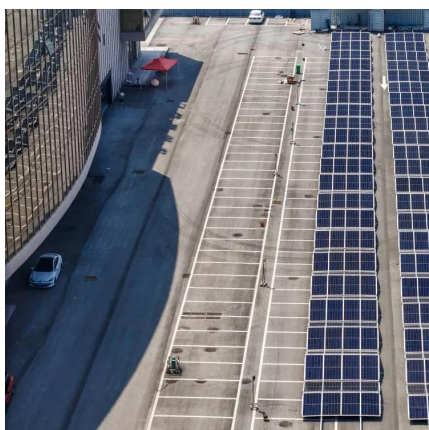


## [How Many Kwh Does a Wind Turbine Produce per Day?](#)

Discover the daily energy potential of wind turbines, ranging from 172 kWh to 26.1 MW, and find out which factors influence their electricity production.

## **The wind energy fact sheet**

Wind energy currently supplies less than 1% of NSW's electricity needs. However, NSW has good quality wind sites with higher wind speeds than many European wind farms.



## **How Much Power Does 5G Base Station Consume? , Huijue ...**

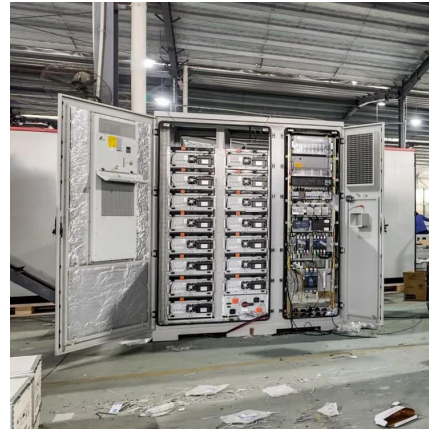
The Silent Energy Crisis in Mobile Networks Have you ever wondered how much energy our hyper-connected world is consuming? 5G base stations, the backbone of next-gen ...





## How much power do large industrial facilities use? Have any of ...

Large plants may consume a lot of power, but they also generate it too. The evaporators use a lot of steam, but we are feeding them 25 psig while running 3 10MW turbines and three 5 MW ...



## Wind Energy , Department of Energy

4 days ago· Wind power is the nation's largest source of renewable energy, with more than 150 gigawatts of wind energy installed across 42 U.S. States and Puerto Rico. These projects ...

## How Much Power Does a 5G Base Station Consume? - Smart Solar

On average, a 5G base station consumes between 1,000 to 3,000 watts. This is significantly higher than 4G base stations, which typically consume 500 to 1,500 watts. The power usage ...



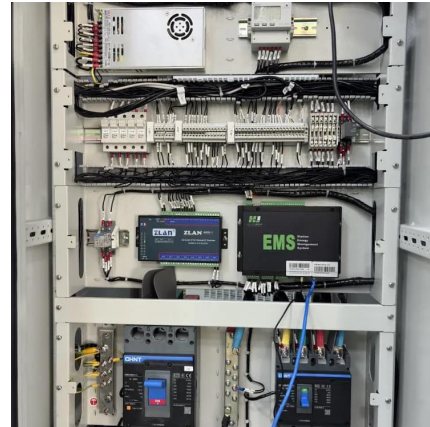
## [How Much Electricity \(Power\) Does a PS3 Use?](#)

Find out how much electricity your PS3 consumes and learn energy-saving tips. Understand the power consumption of your gaming ...



## Energy in South Australia

Thomas Playford Power Station circa 1962  
Historically, much of South Australia's electricity was generated by coal-fueled power stations. As late as 2002, South Australia obtained 100% of its ...



## Electricity generation from wind

Total annual U.S. electricity generation from wind energy increased from about 6 billion kilowatthours (kWh) in 2000 to about 434 billion kWh in 2022. In 2022, wind turbines ...

## How Much Electricity Does a Wind Turbine Produce? Daily and ...

Learn how much electricity wind turbines generate, what affects their output, and how hybrid systems boost renewable energy performance.



## Contact Us

For catalog requests, pricing, or partnerships, please visit:  
<https://motheopreprimary.co.za>