

# **How many lithium battery packs should be in series or parallel**





## Overview

---

Can you mix different capacity lithium batteries?

Yes, you can mix different capacity lithium batteries, whether a normal 12V 100Ah battery or a Lithium server rack battery. You can combine different capacity batteries in parallel. You cannot combine different capacity batteries in series. There are a few points you need to consider when wiring in parallel. Let's explore these three points.

Can lithium-ion batteries be connected in parallel?

Connecting lithium-ion batteries in parallel or series is more complex than merely linking circuits in series or parallel. Ensuring the safety of both the batteries and the person handling them requires careful consideration of several crucial factors.

What is the difference between series and parallel connection of LiFePO4 batteries?

Similarities: Enhanced Battery Performance: Both series and parallel connections of LiFePO4 batteries can enhance the overall performance of the battery pack. A series connection increases the voltage output, while a parallel connection boosts the capacity.

How many lithium batteries can be connected in series?

For instance, LiTime allows for a maximum of four 12V lithium batteries to be connected in series, resulting in a 48-volt system. It's always important to consult the battery manufacturer to ensure that you stay within their recommended limits for series connections.

What is the difference between series and parallel battery packs?

The key differences between battery packs in series and parallel involve voltage and capacity configurations. Series battery packs increase voltage while maintaining the same capacity. In contrast, parallel battery packs



increase capacity while maintaining the same voltage.

What is a series parallel battery connection?

Series-parallel. That's not wiring your batteries in both series and parallel. That would short your battery system! A series-parallel connection is when you wire several batteries in series. Then, you create a parallel connection to another set of batteries in series. By doing this, you can increase both voltage and capacity.



## How many lithium battery packs should be in series or parallel

---



### Ultimate Guide of LiFePO4 Lithium Batteries in Series & Parallel

Unlock the ultimate guide to using LiFePO4 lithium batteries in series and parallel. Learn configurations, benefits, and tips for optimal performance!

### Batteries in Series vs in Parallel: Here's All You Have to Know

Understand the benefits and challenges of wiring batteries in series or parallel. Find out which method suits your application for enhanced power efficiency and battery life.



### LiFePO4 Lithium Batteries in Series VS Parallel Connection

Enhanced Battery Performance: Both series and parallel connections of LiFePO4 batteries can enhance the overall performance of the battery pack. A series connection ...

### [Should You Use Batteries In Series Or Parallel?](#)

Using batteries in series increases voltage while keeping capacity (Ah) the same, ideal for high-power devices like EVs. Parallel connections boost capacity and current ...



## How to Calculate the Number of Lithium Batteries in Series or ...

In actual use, lithium batteries need to be combined in parallel and series to obtain a lithium battery pack with a higher voltage and capacity to ...



## Series vs Parallel Battery Wiring: Key Differences, Pros & Cons

When using multiple batteries in a project, you have two primary wiring configurations--series and parallel. Each has distinct advantages depending on your needs, ...



## [Connecting Lithium Batteries in Parallel and Series](#)

Lithium battery pack technique refers to the processing, assembly and packaging of lithium battery pack. The process of assembling lithium cells together is ...







## Can You Mix Different Capacity Lithium Batteries?

There are a few points you need to consider when wiring in parallel. Let's explore these three points. At the end of the article, you will find ...



## Can You Mix Different Capacity Lithium Batteries?

There are a few points you need to consider when wiring in parallel. Let's explore these three points. At the end of the article, you will find a diagram on how to wire these. First ...



## How to connect in series and parallel - Batelithium

1.1 What is Battery Series Connection To increase the total voltage output of a battery pack, the series connection of LiFePO4 batteries is commonly used. ...



## **How to Calculate the Number of Lithium Batteries in Series or Parallel**

So how to calculate how many series and how many batteries a lithium battery pack is composed of? Before performing the calculation, we need to know what specifications of batteries are ...



## Understanding Battery Pack Configurations: Series vs. Parallel ...

If you connect two 3.6V Li-ion cells (each 4200mAh) in series: This means the battery pack can power a device that requires 7.2V but will last as long as a single 4200mAh ...



## How to Connect Multiple 48V Lithium Batteries in Parallel

Steps to Connect Multiple 48V Lithium Batteries in Parallel 1. Ensure Compatibility Same Voltage and Capacity: All batteries should have the same nominal voltage (48V) and ...



## [Wiring Batteries in Parallel Danger: A Comprehensive ...](#)

Same as the water tanks, let's consider you have lithium batteries, each with 12 volts and 100 amp hours. Connect two lithium batteries with 12 ...



## [How To Connect Batteries In Series & Parallel](#)

A simple guide to how to connect your lead acid or lithium batteries in series, parallel and series parallel configurations.





## [Series vs Parallel Battery Wiring: Key Differences, ...](#)

When using multiple batteries in a project, you have two primary wiring configurations--series and parallel. Each has distinct advantages ...

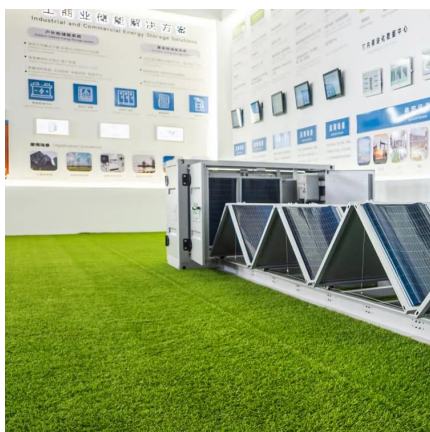
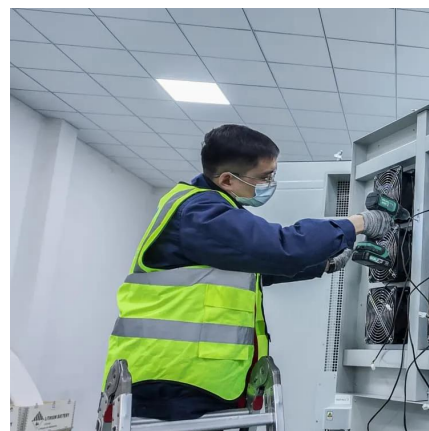


## [LiFePO4 Lithium Batteries in Series VS Parallel ...](#)

Enhanced Battery Performance: Both series and parallel connections of LiFePO4 batteries can enhance the overall performance of the ...

## **Battery Packs In Series Or Parallel: Key Differences And Wiring**

Series connections require connecting the positive terminal of one battery to the negative terminal of the next, while parallel connections connect all positive terminals together ...



## [Batteries in Series vs Parallel: Which is Better?](#)

Connecting in series increases voltage, but wiring in parallel increases your battery bank capacity. That is, amp-hour capacity. The total voltage does not change. That means that two 12V 30Ah ...





## [How to Calculate the Number of Lithium Batteries in ...](#)

Lithium Batteries PACK Lithium battery PACK refers to the processing, assembly and packaging of lithium battery packs. The process of assembling lithium ...

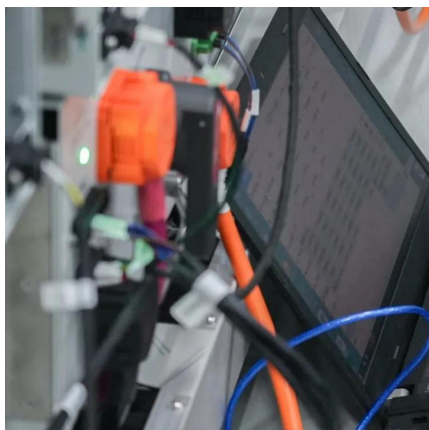


## **batteries**

Let's assume I am going to build a Li-ion battery pack with 12 18650s, where I connect four cells together in parallel and then the three sets of four in series. ...

## [Batteries and Chargers Connected in Series and Parallel](#)

Learn how to connect batteries in series and parallel for different voltage and amp-hour capacities. Battery Tender® offers detailed instructions and ...



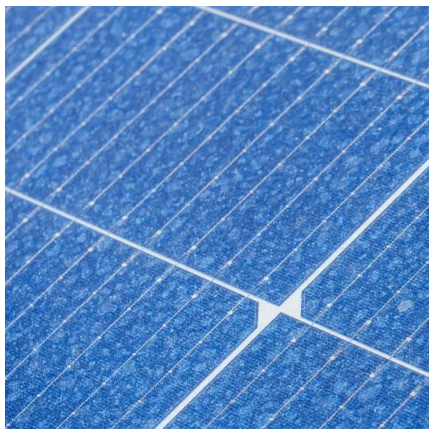
## [Batteries in Series and Parallel: Which is Better?](#)

Explore the pros and cons of connecting batteries in series vs. connecting batteries in parallel. Learn which configuration best suits your power needs for optimal battery performance.



## [How to Calculate the Number of Lithium Batteries in ...](#)

Lithium Battery PACK Lithium battery PACK refers to the processing, assembly and packaging of lithium battery packs. The process of assembling lithium ...



## **Helpful Guide to Lithium Batteries in Parallel and Series**

In actual use, lithium batteries need to be combined in parallel and series to obtain a lithium battery pack with a higher voltage and capacity to meet the actual power supply ...

## [Strings, Parallel Cells, and Parallel Strings](#)

Strings, Parallel Cells, and Parallel Strings Whenever possible, using a single string of lithium cells is usually the preferred configuration for a lithium ion battery pack as it is the lowest cost ...



## [How to Connect 18650 Batteries in Parallel](#)

Connecting 18650 batteries in parallel can increase capacity and allow higher discharge rates. But there are some important safety ...



## Batteries in Series vs Parallel: Which is Better?

Connecting in series increases voltage, but wiring in parallel increases your battery bank capacity. That is, amp-hour capacity. The total voltage does not ...



## Can You Mix Different Capacity Lithium Batteries?

Yes, you can mix different capacity lithium batteries, whether a normal 12V 100Ah battery or a Lithium server rack battery. You can combine ...

## Contact Us

---

For catalog requests, pricing, or partnerships, please visit:  
<https://motheopreprimary.co.za>