

How many kilowatts does the inverter have





Overview

Before we go any further, we highly recommend that you choose a pure sine wave inverter. This type of inverter delivers high-quality electricity, similar to your utility company. This way, none of your appliances run the risk of being damaged. Now, when it comes to sizing your inverter, you always need to check.

We have summarized the appliances that inverters from 300W to 3000W can run depending on their rated maximum power. Note to our readers: Use the above formula to determine.

The typical inverter sizes used for residential and commercial applications are between 1 and 10kW with 3 and 5kW sizes being the most common. With such an array of options, how do you find the right size for you?

An inverter works best when close to its capacity. What is the power output of an inverter?

Power output is the maximum continuous power the inverter can supply to all the loads on the system. Exceeding the power rating by having a larger load (too many appliances) than the inverter can handle will cause it to shut down. The power output of a 3 kW inverter for example is 3000 watts (3 kW).

What size inverter do I Need?

Inverters come in different sizes starting from as little as 125 watts. The typical inverter sizes used for residential and commercial applications are between 1 and 10kW with 3 and 5kW sizes being the most common. With such an array of options, how do you find the right size for you?

An inverter works best when close to its capacity.

How much power does an inverter need?

The continuous power requirement is actually 2250 but when sizing an inverter, you have to plan for the start up so the inverter can handle it. Third, you need to decide how long you want to run 2250 watts. Let's say you would like to power these items for an eight-hour period.



How much power does a 5 kW inverter use?

If your system pushes 5,000 watts, a 5,000-watt (or 5 kW) inverter is usually the move. But it's not always one-to-one. Some setups undersize the inverter a bit—say, 4.6 kW for 5 kW of panels—to save cash without losing much power. It's a balancing act between cost, performance, and when you actually use electricity.

Is a 10 kVA inverter enough?

For example, an inverter rated at 10 kVA with a power factor of 0.8 can only deliver 8 kW of real power. That means if your total appliance load is 10 kW, this inverter will not be enough.

Why does a 3 kW inverter shut down?

Exceeding the power rating by having a larger load (too many appliances) than the inverter can handle will cause it to shut down. The power output of a 3 kW inverter for example is 3000 watts (3 kW). Peak output or surge power is the maximum power output an inverter can deliver for a short time.



How many kilowatts does the inverter have



[How Much Electricity Does an Aircon Use?](#)

How Many KWh Does an AC Use Per Day? To calculate the daily energy consumption of an aircon, you can multiply its hourly energy usage (in kWh) by the number of ...

What Size Solar Inverter Do I Need? Experts Break It ...

Here's the cheat code: your inverter size should match your solar panel output. If your system pushes 5,000 watts, a 5,000-watt (or 5 kW) ...

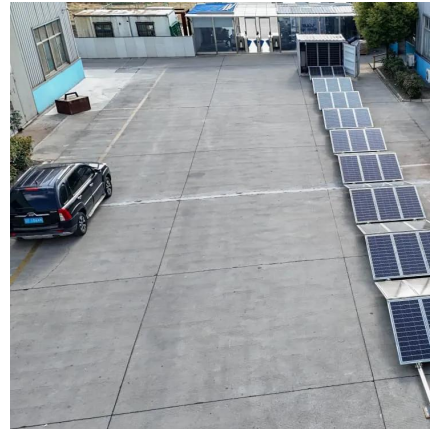


Understanding the 10000W Inverter - Power, Performance, and Kilowatt ...

Both of these terms basically point to the same thing--a beefy inverter that can constantly put out 10,000 watts, or 10 kilowatts. That's plenty of power to run a bunch of ...

What Size Solar Inverter Do I Need? Experts Break It Down

Here's the cheat code: your inverter size should match your solar panel output. If your system pushes 5,000 watts, a 5,000-watt (or 5 kW) inverter is usually the move.



[BTU/h To kW Air Conditioning Calculator \(Simple ...](#)

The US and UK-produced air conditioners always have the same capacity unit: BTU/h or British Thermal Units. When it comes to measuring the power ...

[Understanding Inverter Power Ratings: kW vs kVA ...](#)

What do kW and kVA mean in inverter specifications? kW refers to the real or usable power output of an inverter. kVA represents the total power capacity it ...



[The Only Inverter Size Chart You'll Ever Need](#)

We have created a comprehensive inverter size chart to help you select the correct inverter to power your appliances.



How To Size A Solar Inverter in 3 Easy Steps

The typical inverter sizes used for residential and commercial applications are between 1 and 10kW with 3 and 5kW sizes being the most common. With such an array of options, how do ...



Understanding the 10000W Inverter - Power, Performance, and ...

Both of these terms basically point to the same thing--a beefy inverter that can constantly put out 10,000 watts, or 10 kilowatts. That's plenty of power to run a bunch of ...

How to Size a Hybrid Inverter for Your Home Energy Needs?

Choosing the right hybrid inverter for your home is key to maximizing energy efficiency and getting the most from your solar and battery system. In this easy-to-understand ...



What is the Difference Between a 1kW, 3kW, and 5kW Inverter?

Inverters come in different sizes, ranging from small 1kW models to larger 3kW and 5kW options. Understanding the differences between these inverter sizes can help you select the right one ...



How much power does a solar inverter have?

A solar inverter typically has power ratings that range significantly, usually between 1 kW to over 10 kW. This variability depends on the inverter ...



How much copper does a photovoltaic inverter have

How many kilowatts does a solar inverter produce? wo kilowatts and extends into the megawatt range. Typical outputs are 5 kW for private home rooftop plants, 10 - 20 kW for commercial ...

How Many Watts Does an Inverter Refrigerator Use: A Closer ...

An inverter refrigerator is a popular appliance that helps us keep our food fresh and cool. However, one question that often arises is, "How many watts does an inverter ...



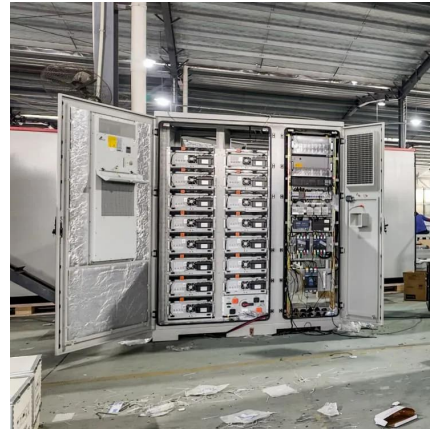
How many solar panels can an inverter handle

A: To determine how many solar panels your inverter can handle, you need to check the inverter's power rating, typically measured in kilowatts ...



Can a 5kW Inverter Really Power Your Entire House?

For example, if you have a 6kWp solar system, you may need a 6 kW inverter or two 3 kW inverters to match the power output of your solar system. Otherwise, you may waste ...

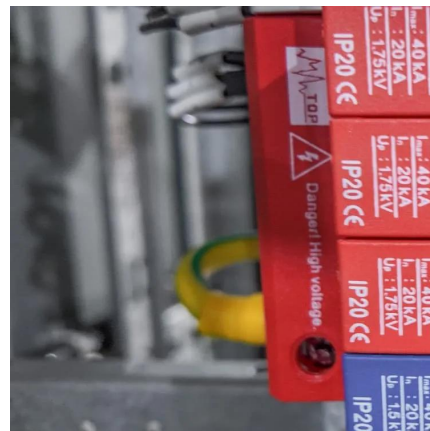


calculate inverter size for solar + Sizing Formula

Most solar inverters, including brands like the Growatt hybrid inverter, come in discrete sizes measured in terms of single or multiple kilowatts (kW). Common sizes range ...

Inverter Specifications and Data Sheet

For example, an inverter with a rated output power of 5,000 W and a peak efficiency of 95% requires an input power of 5,263 W to operate at full power. ...



Best Aircon & Appliances Electricity Consumption ...

How is aircon electricity consumption computed? Electricity consumption in the Philippines is measured in Kilowatt-hour (kWh). The basic formula to compute ...



[Inverter Specifications and Data Sheet](#)

For example, an inverter with a rated output power of 5,000 W and a peak efficiency of 95% requires an input power of 5,263 W to operate at full power. California Energy Commission ...

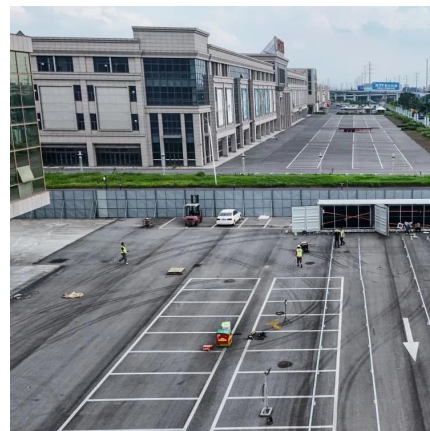


What Size Inverter Do I Need?

Finding the proper inverter size for your needs is as simple as adding together the necessary wattages of the items that you're looking to power.

[List of Electric Appliances & Wattage Usage Chart ...](#)

Are you looking for wattage requirements for various electric appliances to calculate the power needs of your generator? Then look no ...



Understanding Inverter Power Ratings: kW vs kVA Explained

What do kW and kVA mean in inverter specifications? kW refers to the real or usable power output of an inverter. kVA represents the total power capacity it can carry, including power lost ...



How much electricity does a heat pump use?

For example, if you have a central 3-ton (36,000 BTU) heat pump, it should typically consume between 1.8 and 2.6 kWh of energy per hour ...



What Size Generator For Welding? (How to Calculate It)

Because 1 KVA = 1 Kw, a generator that makes 6 KVA of peak power is also rated at 6 kW. Power Supply Differences Between Inverters & ...

How To Size A Solar Inverter in 3 Easy Steps

The typical inverter sizes used for residential and commercial applications are between 1 and 10kW with 3 and 5kW sizes being the most common. With ...



How much power does a solar inverter have? , NenPower

A solar inverter typically has power ratings that range significantly, usually between 1 kW to over 10 kW. This variability depends on the inverter type, application, and the solar ...



How much electricity (kWh and kW) does an air ...

However, the most important aspect of electricity, and what you pay for at the end of the month, is "Electrical Energy", which is measured in ...



How Many Inverters Do I Need? (What You Need)

Power inverters are essential in a PV system for converting DC-generated power to AC usable power. Since they can be expensive, read on ...

Contact Us

For catalog requests, pricing, or partnerships, please visit:
<https://motheopreprimary.co.za>