

How far is the flow battery from a communication base station





Overview

Why do cellular base stations have backup batteries?

[.] Cellular base stations (BSs) are equipped with backup batteries to obtain the uninterruptible power supply (UPS) and maintain the power supply reliability. While maintaining the reliability, the backup batteries of 5G BSs have some spare capacity over time due to the traffic-sensitive characteristic of 5G BS electricity load.

What is a flow battery?

One such option is the flow battery. These batteries excel in energy storage, making them ideal for larger installations that require consistent power over extended periods. Another alternative is the sodium-sulfur (NaS) battery.

Which battery is best for telecom base station backup power?

Among various battery technologies, Lithium Iron Phosphate (LiFePO₄) batteries stand out as the ideal choice for telecom base station backup power due to their high safety, long lifespan, and excellent thermal stability.

What makes a telecom battery pack compatible with a base station?

Compatibility and Installation Voltage Compatibility: 48V is the standard voltage for telecom base stations, so the battery pack's output voltage must align with base station equipment requirements. Modular Design: A modular structure simplifies installation, maintenance, and scalability.

How is the schedulable capacity of a standby battery determined?

In this article, the schedulable capacity of the battery at each time is determined according to the dynamic communication flow, and the scheduling strategy of the standby power considering the dynamic change of communication flow is proposed. In addition, the model of a base station standby battery responding grid scheduling is established.



Can BS backup batteries be used as flexibility resources for power systems?

Therefore, the spare capacity is dispatchable and can be used as flexibility resources for power systems. This paper evaluates the dispatchable capacity of the BS backup batteries in distribution networks and illustrates how it can be utilized in power systems.



How far is the flow battery from a communication base station



Communication Base Station Energy Storage Cabinet: The ...

Meet the communication base station energy storage cabinet - the industrial equivalent of a superhero's utility belt. These unassuming metal cabinets work 24/7 to ensure your TikTok ...

Cell sites and cell towers in a mobile cellular network

A picture of a cell tower at a cell site Cell site means the location where a cell tower is installed A cell site is a location or "site" where a mobile ...



Energy Storage for Communication Base

The one-stop energy storage system for communication base stations is specially designed for base station energy storage. Users can use the energy storage system to discharge during ...

Evaluating the Dispatchable Capacity of Base Station Backup Batteries

Evaluating the Dispatchable Capacity of Base Station Backup Batteries in Distribution Networks
Published in: IEEE Transactions on Smart Grid (



Volume: 12, Issue: 5, September 2021)



Evaluating the Dispatchable Capacity of Base Station Backup ...

Evaluating the Dispatchable Capacity of Base Station Backup Batteries in Distribution Networks
Published in: IEEE Transactions on Smart Grid (Volume: 12, Issue: 5, September 2021)



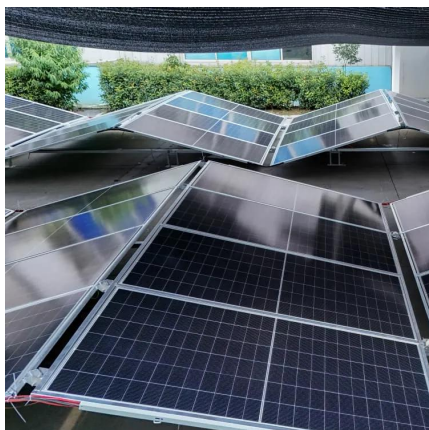
Use of Batteries in the Telecommunications Industry

Large telecom offices and cell sites with dedicated generators have 3 to 4 hours of battery reserve time A large telecom office may have over 400 cells and 8000 gallons of electrolyte



A Study on Energy Storage Configuration of 5G Communication Base

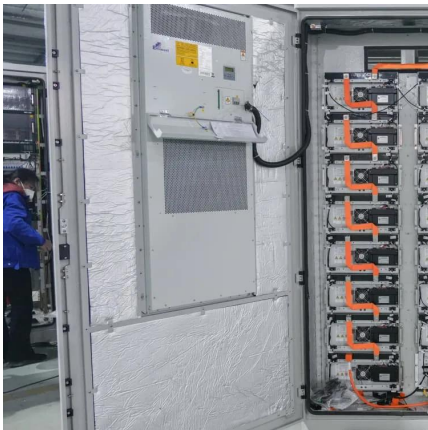
Therefore, 5G base station dispatch can achieve a win-win situation between communication systems and power systems.





[What are the communication base station energy ...](#)

Energy storage systems commonly employed in telecommunications include various battery technologies, most notably lithium ...



[Telecom Base Station Backup Power Solution: Design ...](#)

Discover the 48V 100Ah LiFePO4 battery pack for telecom base stations: safe, long-lasting, and eco-friendly. Optimize reliability with our ...

[\[2023\] A Comprehensive Overview about the RTK Base](#)

What is the RTK Base? RTK, or Real-Time Kinematic is a method that boosts the precision of GNSS (Global Navigation Satellite System) signals like GPS, ...



[Understanding Backup Battery Requirements for ...](#)

Telecom base stations require reliable backup power to ensure uninterrupted communication services. Selecting the right backup battery is ...



[Communication Base Station Backup Power Selection Guide](#)

Well, here's an uncomfortable truth: 78% of tower operators still use decade-old discharge curves for battery sizing. Maybe it's time we actually listened to those AI models predicting weather ...

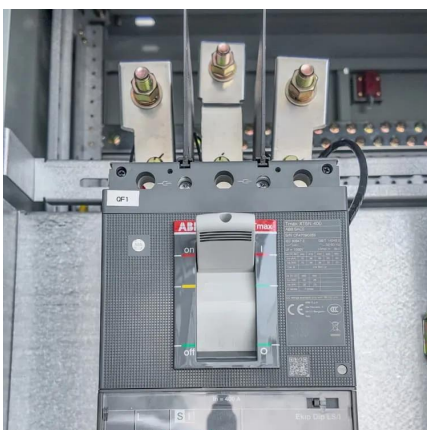


[Optimization of Communication Base Station Battery ...](#)

In the communication power supply field, base station interruptions may occur due to sudden natural disasters or unstable power supplies. This work studies the optimization of ...

[Satellite Communication Protocols and Ground Stations](#)

This standardization simplifies data sharing and processing between various satellites and ground stations. Satellite-to-Ground Station ...



[Types and Applications of Mobile Communication ...](#)

Mobile communication base station is a form of radio station, which refers to a radio transceiver station that transmits information between mobile ...



BTS (base station transceiver)

BTS, or Base Station Transceiver, is a critical component in modern mobile communication networks. BTS is responsible for transmitting and receiving wireless signals ...

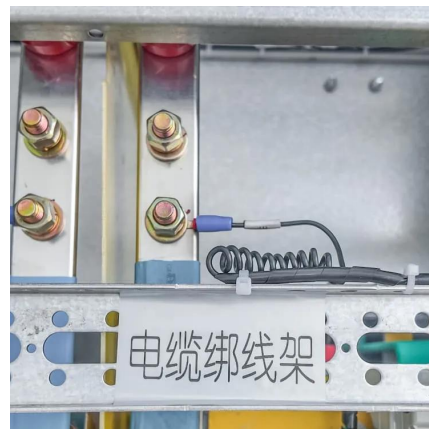


Base Station System Structure

2 Base Station Background The intent of this section is to explore the role of base stations in communications systems, and to develop a reference model that can be used to describe and ...

Base Station Batteries

Base Station Batteries Lithium Iron Batteries for Telecommunications Base Stations REVOP's lithium iron phosphate (LiFePO4) batteries are ideal telecom base station batteries. These ...



[Energy Storage for Communication Base](#)

The one-stop energy storage system for communication base stations is specially designed for base station energy storage. Users can use the energy storage ...



Telecom Base Station Backup Power Solution: Design Guide for ...

Discover the 48V 100Ah LiFePO4 battery pack for telecom base stations: safe, long-lasting, and eco-friendly. Optimize reliability with our design guide.



[Battery technology for communication base stations](#)

In order to ensure the reliability of communication, 5G base stations are usually equipped with lithium iron phosphate cascade batteries with high energy density and high charge and ...

Grounding

1. How important is a ground? Most people say that grounding is all- important, but I have had a few people tell me that grounds aren't necessary. Grounds fulfill three distinct functions. The ...



[Understanding Backup Battery Requirements for Telecom Base ...](#)

Telecom base stations require reliable backup power to ensure uninterrupted communication services. Selecting the right backup battery is crucial for network stability and ...



base station in 5g

A 5G base station, also known as a gNodeB (gNB), is a critical component of a 5G network infrastructure. It plays a central role in enabling wireless communication between user ...



Base station operation guidelines

Base station operation guidelines This topic introduces the concept of base station operation, provides information to help you identify good setup locations, describes best practices for ...

(PDF) Dispatching strategy of base station backup power supply

In this article, the schedulable capacity of the battery at each time is determined according to the dynamic communication flow, and the scheduling strategy of the standby ...



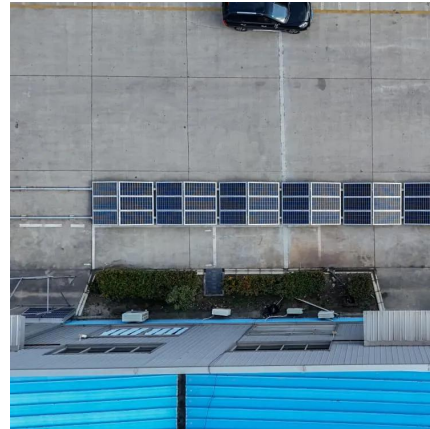
[Types of Batteries Used in Telecom Systems: A Guide](#)

That's where batteries come into play. They ensure that communication lines remain open, even during outages or emergencies. But not all batteries are created equal. ...



Optimization of Communication Base Station Battery ...

In the communication power supply field, base station interruptions may occur due to sudden natural disasters or unstable power supplies. This ...



Contact Us

For catalog requests, pricing, or partnerships, please visit:
<https://motheopreprimary.co.za>