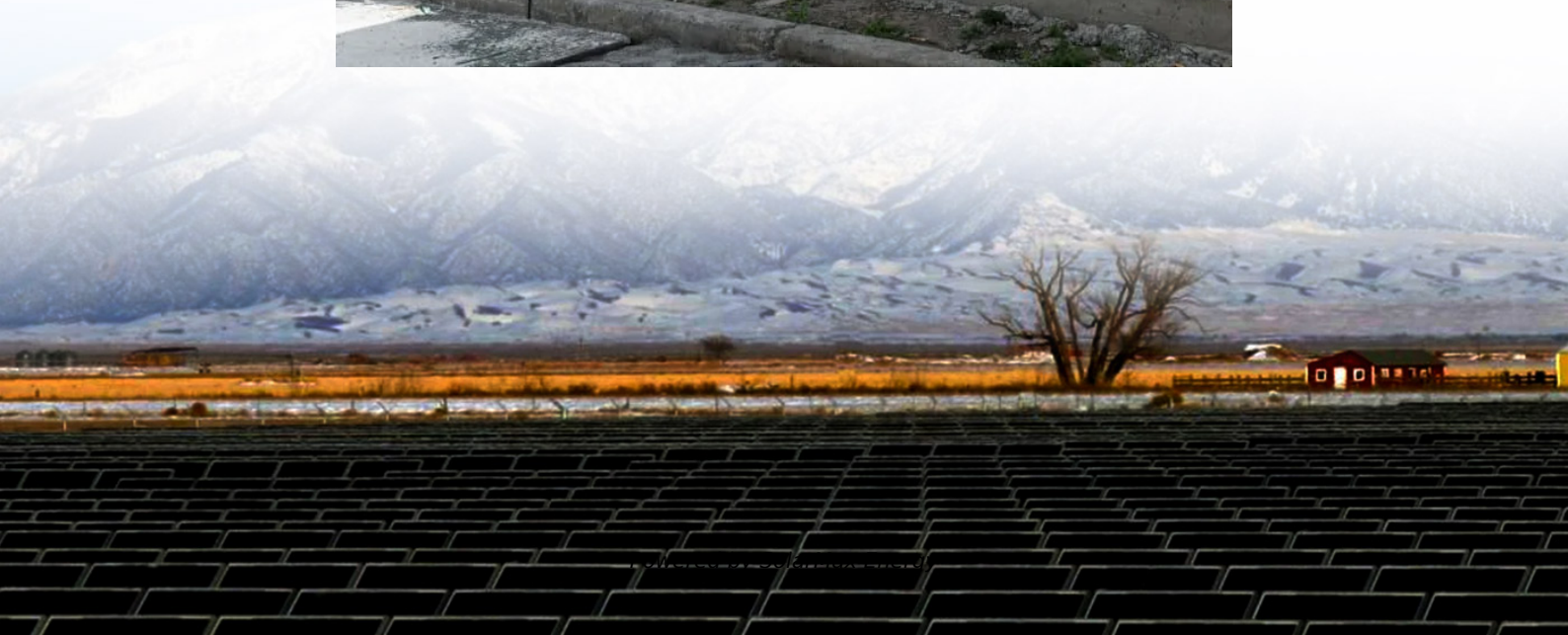


Current of communication base station





Overview

Base station (or base radio station, BS) is – according to the 's (ITU) (RR) – a " in the ." A base station is called in , in (), and in . The term is used in the context of ,

What is a base station in telecommunications?

A base station is referred to a stationary trans-receiver used in telecommunications that serves as the primary hub for connectivity of wireless device communication. A base station also links the gadget to other devices or network, typically using fibre optic cables or dedicated high bandwidth wire.

How do base stations work?

Base stations use antennas mounted on cell towers to send and receive radio signals to and from mobile devices within their coverage area. This communication enables users to make voice calls, send texts, and access data services, connecting them to the wider world. Network Management and Optimization.

What is a signal transmission & reception base station?

Signal Transmission and Reception Base stations use antennas mounted on cell towers to send and receive radio signals to and from mobile devices within their coverage area. This communication enables users to make voice calls, send texts, and access data services, connecting them to the wider world.

Why do we need more base stations?

We will find more base stations where there is greater demand for networks. Cellular networks are the backbone of modern wireless communications, enabling the use of mobile telephony, mobile internet, and other data services.

What is a base station in a wireless network?



In the area of wireless computer networking, a base station is a radio receiver/transmitter that serves as the hub of the local wireless network, and may also be the gateway between a wired network and the wireless network. It typically consists of a low-power transmitter and wireless router.

Are base stations a transmitter or broadcast point?

Since they can receive and send wireless signals, base stations are typically trans receivers, if they could just send out wireless signals, they would be referred to as transmitters or broadcast points. To accommodate the growing demand, the number of base stations is expected to keep growing.



Current of communication base station



Optimizing redeployment of communication base station

Signal coverage quality and strength distribution in complex environments pose severe challenges, leading to the inadequacy of traditional two-dimensional base station ...

What is a base station and how are 4G/5G base ...

Base station is a stationary trans-receiver that serves as the primary hub for connectivity of wireless device communication. The ...



What is a Base Station in Telecommunications?

What is a Base Station? A base station is a critical component in a telecommunications network. A fixed transceiver that acts as the central communication hub for one or more wireless mobile ...

The Base Station in Wireless Communications: The ...

Equipped with an electromagnetic wave antenna, often placed on a tall mast, the base station enables communication between mobile terminals ...



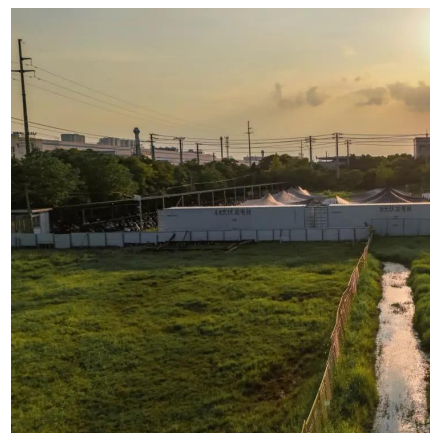
What is a base station and how are 4G/5G base stations different?

Base station is a stationary trans-receiver that serves as the primary hub for connectivity of wireless device communication. The architecture of the 5G network must ...



Communication Base Station Current Limiting , Huijue Group E-Site

The invisible culprit often lies in communication base station current limiting - a critical yet under-discussed safeguard preventing network collapse. But is today's current limiting methodology ...



What Is A Base Station?

A base station is an integral component of wireless communication networks, serving as a central point that manages the transmission and reception of signals between ...



Monitoring and Analysis of the Current Environmental Situation of

To understand the current situation of the electromagnetic radiation environment of 5G application base stations is the basis for avoiding the old road of "pollution before ...



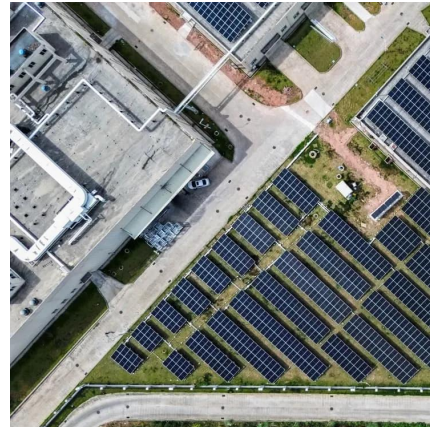
Base station

OverviewLand surveyingComputer networkingWireless communicationsSee also

Base station (or base radio station, BS) is - according to the International Telecommunication Union's (ITU) Radio Regulations (RR) - a "land station in the land mobile service." A base station is called node B in 3G, eNB in LTE (4G), and gNB in 5G. The term is used in the context of mobile telephony, wireless computer networking

Simulation Research on Current Distribution Characteristics of ...

Mobile communication base stations are the basic facilities of telecommunication operation networks. When the communication base station is struck by lightning,



Base Stations and Cell Towers: The Pillars of Mobile Connectivity

Base stations use antennas mounted on cell towers to send and receive radio signals to and from mobile devices within their coverage area. This communication enables ...



The Base Station in Wireless Communications: The Key to ...

Equipped with an electromagnetic wave antenna, often placed on a tall mast, the base station enables communication between mobile terminals (such as mobile phones or ...



What Is a Base Station and Its Role in Enhancing ...

When we talk about a base station, we're diving into the heart of communication technology. It's essentially a fixed point of communication within a network ...



What Are Base Station Antennas? Complete Guide

In modern telecommunications systems, the base station antenna stands out as an undeniable and crucial component to facilitate our daily ...



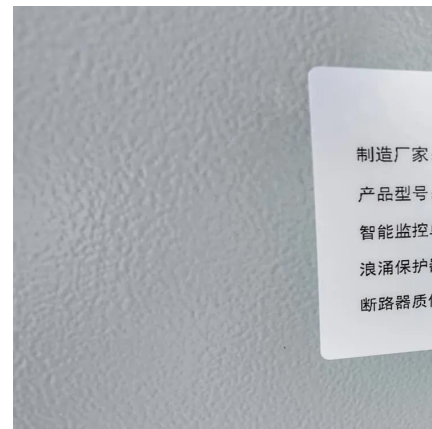


Base Station

Importance A base station is a crucial aspect of communication infrastructure, playing a pivotal role in wireless and cellular communication. It acts as a central hub for the ...

What is a Base Station?

While the base station has many other applications, it's often used for mobile telephony, wireless communications, and even wireless computer networking. A base station ...



Optimizing redeployment of communication base station

Abstract Most of the current research is based on the performance of the base station (BS) itself or the operation mode of the communication operator without considering the users' needs ...

Monitoring and Analysis of the Current Environmental ...

With the rapid development of the 5G era, the concern of human health risks caused by the construction of mobile base stations has also come ...





What is a Base Station?

While the base station has many other applications, it's often used for mobile telephony, wireless communications, and even wireless computer ...



Low Voltage Communications , CSQ Electrical

Reliability and Continuity: We ensure uninterrupted operation of communication equipment and base stations by providing a stable and reliable power supply, ...

How do communication base stations work

They allow mobile devices to connect with the network, enabling voice calls, text messages, and data transfers. In this article, we will explore how communication base stations work and their ...



Base Stations

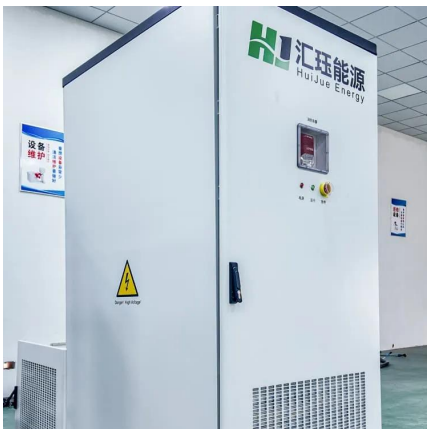
Base stations form a key part of modern wireless communication networks because they offer some crucial advantages, such as wide coverage, continuous communications and ...





Communication Base Station Current Limiting , Huijue Group E- Site

During December's Northern Lights tourism boom, Telenor implemented context-aware current limiting across 142 base stations. Their system prioritized: 1) Emergency services 2) Payment ...



Recommendations for Base Station Antennas

The procurement, testing and deployment of base station antennas - a critical component in the delivery of mobile communications - will be simpler for operators and ...

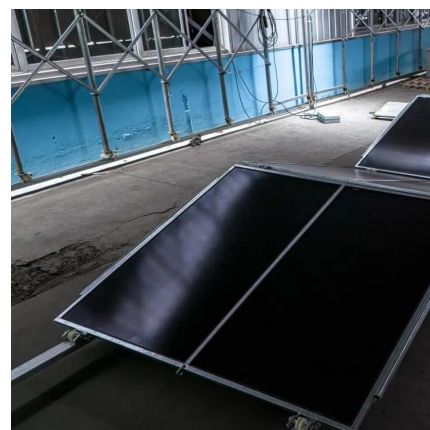
Optimised configuration of multi- energy systems considering the

However, batteries, as the current communication base station uninterruptible power supply, present a number of disadvantages, such as difficulty in maintenance, chemical ...



Base Stations and Cell Towers: The Pillars of Mobile ...

Base stations use antennas mounted on cell towers to send and receive radio signals to and from mobile devices within their coverage area.
...





Base station

The term is used in the context of mobile telephony, wireless computer networking and other wireless communications and in land surveying. In surveying, it is a GPS receiver at a known ...

Simulation Research on Current Distribution Characteristics of ...

Mobile communication base stations are the basic facilities of telecommunication operation networks. When the communication base station is struck by lightning, a very high overvoltage ...



Solar Powered Cellular Base Stations: Current Scenario, ...

There is a second factor driving the interest in solar powered base stations. In the recent past, the bulk of the growth in the deployment of cellular base stations has been in parts of the world ...

Contact Us

For catalog requests, pricing, or partnerships, please visit:
<https://motheopreprimary.co.za>