

Communication base station wind power anchor point





Communication base station wind power anchor point

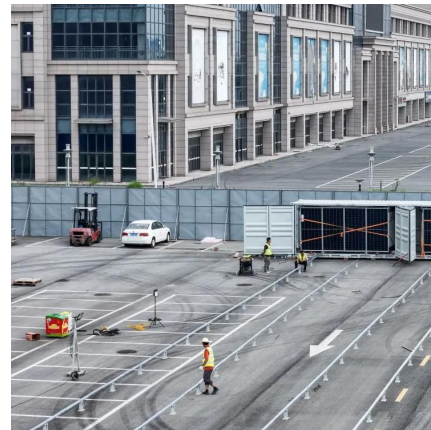


Application of wind solar complementary power ...

At present, many domestic islands, mountains and other places are far away from the power grid, but due to the communication needs of local ...

Introduction of wind solar complementary power supply system for

The wind solar complementary power supply system of communication base station is composed of wind turbine generator, solar cell module, communication integrated ...



Application of wind solar complementary power generation ...

At present, many domestic islands, mountains and other places are far away from the power grid, but due to the communication needs of local tourism, fishery, navigation and ...



Solution of Mobile Base Station Based on Hybrid System of Wind

This paper designs a wind, solar, energy storage, hydrogen storage integrated communication power supply system, power supply reliability and efficient energy use through ...



[The Role of Hybrid Energy Systems in Powering ...](#)

Hybrid energy solutions enable telecom base stations to run primarily on renewable energy sources, like solar and wind, with the diesel ...



Communication base station power station based on wind-solar

The communication base station power station based on wind-solar complementation comprises a foundation base, a communication tower mast, a base station machine room, a wind power ...



[\(PDF\) USRP-Based Single Anchor Positioning: AoA with 5G](#)

The simulation results show that the uplink SRS works well for 3D UE positioning with a single base station, by providing a flexible resolution and accuracy for diverse ...





CN109372703B

The invention relates to the technical field of new energy communication, and discloses a communication base station based on wind-solar hybrid, which comprises a base, wherein a ...



Base Stations and Cell Towers: The Pillars of Mobile ...

Base stations and cell towers are critical components of cellular communication systems, serving as the infrastructure that supports seamless ...



What is Ane Solar Wind Hybrid Power Supply System for Communication

What is Ane Solar Wind Hybrid Power Supply System for Communication Base Station, 10kw 21 manufacturers & suppliers on Video Channel of Made-in-China .



3.5 kW wind turbine for cellular base station: Radar cross section

Due to dramatic increase in power demand for future mobile networks (LTE/4G, 5G), hybrid-(solar-/wind-/fuel-) powered base station has become an effective solution to reduce fossil fuel ...



How to make wind solar hybrid systems for telecom stations?

Wind solar hybrid systems can fully ensure power supply stability for remote telecom stations. Meet the growing demand for communication services.



Joint placement and communication optimization of uav base stations ...

In our paper, we propose a UAV base station (BS) localization method under aerial global positioning system (GPS) jammed environments, where the UAV-BS simultaneously provides ...

The Role of Hybrid Energy Systems in Powering Telecom Base Stations

Hybrid energy solutions enable telecom base stations to run primarily on renewable energy sources, like solar and wind, with the diesel generator as a last resort. This ...



Multi-objective cooperative optimization of communication ...

This paper develops a method to consider the multi-objective cooperative optimization operation of 5G communication base stations and Active Distribution Network (ADN) and constructs a ...



Research on future 6G green wireless networks

In mobile communication networks, base stations are the largest consumers of energy. According to GSMA's 2021 study of 31 networks, base station energy consumption ...



Anhua High Stable Wind Turbine Solar Module ...

A. System introduction The new energy communication base station supply system is mainly used for those small base station situated at remote area ...

Large-scale Outdoor Communication Base Station

The Large-scale Outdoor Communication Base Station is a state-of-the-art, container-type energy solution for communication base stations, smart cities, ...



CN111836120A

A communication base station, comprising: the omnidirectional antenna is fixedly arranged on the wind driven generator and is electrically connected with an internal circuit of the wind



Why Telecom Base Stations?

Variable Speed Operation to improve fuel efficiency Reduces Fuel Consumption (typically by 50 - 80%) PV and small-scale wind generators can be easily incorporated to supplement the ...



BASE STATION ANTENNAS - RELIABLE WIND LOAD ...

METHODS OF DETERMINING THE WIND LOAD
There are three recognised methods for determining the wind load of base station antennas:

Exploiting Wind Turbine-Mounted Base Stations to Enhance ...

We investigate the use of wind turbine-mounted base stations (WTBSs) as a cost-effective solution for regions with high wind energy potential, since it could replace or even outperform ...



Communication base station stand-by power supply system ...

TL;DR: In this article, the authors proposed a communication base station stand-by power supply system based on an activation-type cell and a wind-solar complementary power supply (WSP) ...



Application of wind solar complementary power ...

In addition, solar energy and wind energy are highly complementary in time and region. The island scenery complementary power ...



Anchoring , Safe Anchorage / Anchor Planning with Diagram

Factors to bear in mind while determining Safe Anchorage / Anchor Planning: Position of anchoring defined. Depth of water and amount of cable. State of tide HW/LW, rise ...

Wind Solar Hybrid Power System for the Communication Base Station

In conclusion, it's more eco-friendly and economic to construct a wind solar hybrid power system for the communication base station cause solar and wind is sufficient here.



Contact Us

For catalog requests, pricing, or partnerships, please visit:
<https://motheopreprimary.co.za>