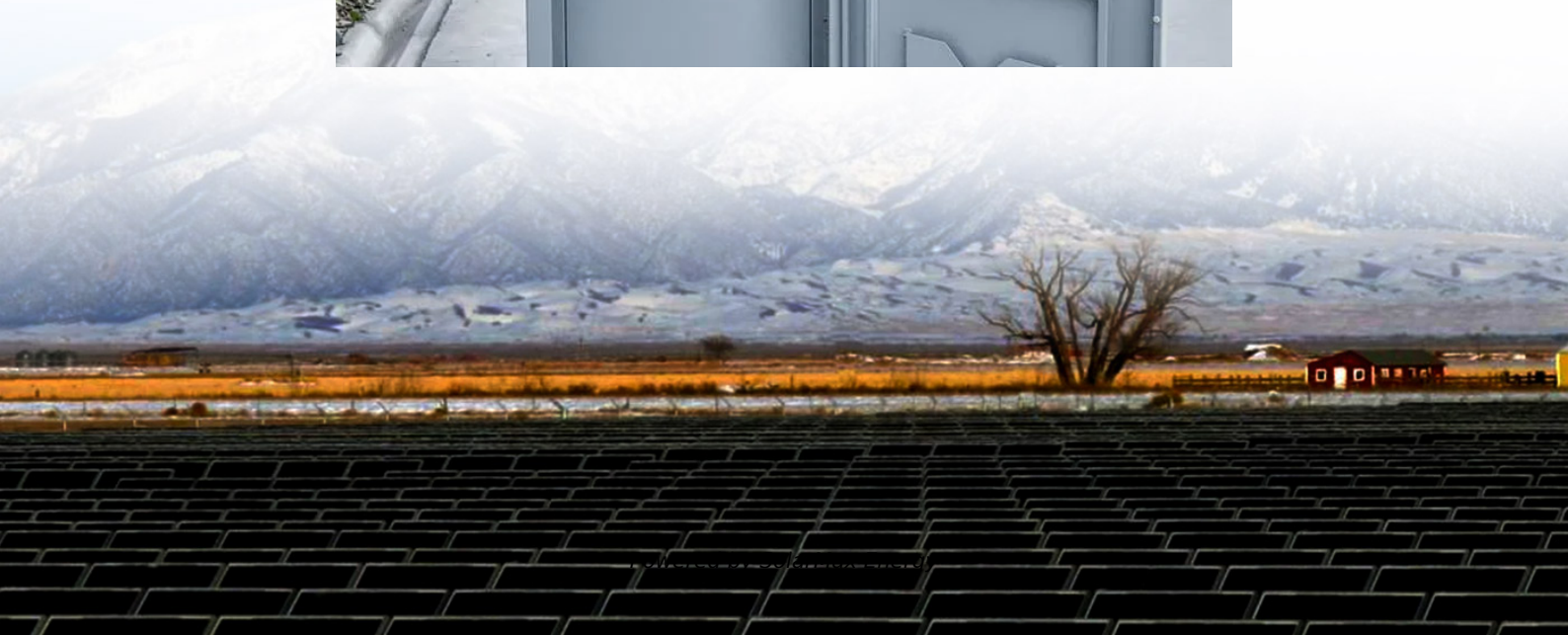


Communication base station battery pack selection





Overview

What makes a telecom battery pack compatible with a base station?

Compatibility and Installation Voltage Compatibility: 48V is the standard voltage for telecom base stations, so the battery pack's output voltage must align with base station equipment requirements. Modular Design: A modular structure simplifies installation, maintenance, and scalability.

Which battery is best for telecom base station backup power?

Among various battery technologies, Lithium Iron Phosphate (LiFePO₄) batteries stand out as the ideal choice for telecom base station backup power due to their high safety, long lifespan, and excellent thermal stability.

How do you protect a telecom base station?

Backup power systems in telecom base stations often operate for extended periods, making thermal management critical. Key suggestions include: Cooling System: Install fans or heat sinks inside the battery pack to ensure efficient heat dissipation.

What is a telecom battery?

Telecom batteries play a crucial role in powering equipment, supporting backup systems, and facilitating smooth operations. This comprehensive guide will delve into the types of telecom batteries, their applications, maintenance tips, and the latest advancements in battery technology. 1. Understanding Telecom Batteries 2.

Why do data centers use Telecom batteries?

In data centers, telecom batteries provide backup power to servers and networking equipment. They ensure data integrity and availability during power outages. Cellular networks rely on telecom batteries to maintain service continuity.



What are the different types of Telecom batteries?

These batteries are integral to data centers, cell towers, and other communication infrastructures. There are several types of telecom batteries, each with unique characteristics suited for different applications: Lead-Acid Batteries: Commonly used due to their reliability and cost-effectiveness. They come in two main types:



Communication base station battery pack selection



[Communication Base Station Backup Battery](#)

LiFePo4 battery, with long span life (4000+) and stable performance. The battery pack with smart battery management system can match the 19 - or 21-inch

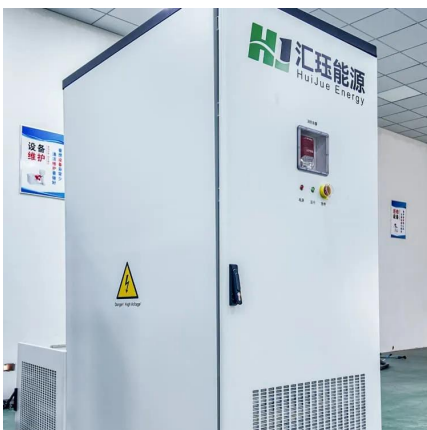
Understanding Backup Battery Requirements for Telecom Base Stations

Telecom base stations require reliable backup power to ensure uninterrupted communication services. Selecting the right backup battery is crucial for network stability and ...



[Battery specifications for communication base stations](#)

With their small size, lightweight, high-temperature performance, fast recharge rate and longer life, the lithium-ion battery has gradually replaced the traditional lead-acid battery as a better option ...



What Are the Critical Aspects of Telecom Base Station Backup ...

Telecom base station backup batteries are essential for ensuring uninterrupted communication by providing reliable, long-lasting power during outages. Critical aspects ...



[Telecom Base Station Backup Power Solution: Design ...](#)

This guide outlines the design considerations for a 48V 100Ah LiFePO4 battery pack, highlighting its technical advantages, key design ...



Comprehensive Insights into Communication Base Station Battery...

The global communication base station battery market is projected to reach USD 1.26 billion by 2033, exhibiting a CAGR of 11.3% during the 2025-2033 forecast period. The ...



The 200Ah Communication Base Station Backup Power Lead-acid Battery

GEM Battery GF series communication base station lead-acid batteries are used for telecom communication backup power supply, support multi-channel parallel connection, good ...





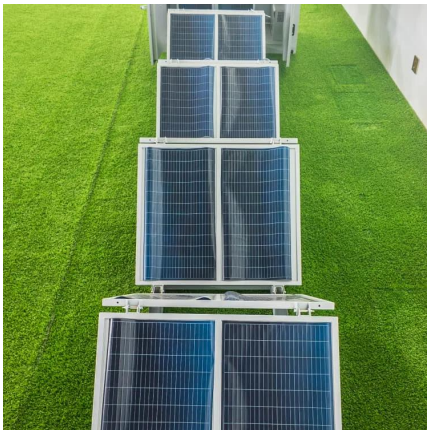
Lithium ion battery for telecom industry/towers/backup ...

The construction of mobile communication base stations is an important part of social security. The stability of communication base stations is related to ...



[Communication Base Station Backup Power Selection Guide](#)

When a typhoon knocks out grid power across Southeast Asia, how do operators ensure communication base stations keep 5G networks online? The answer lies in strategic backup ...



Selection and maintenance of battery for communication base ...

Focused on the engineering applications of batteries in the communication stations, this paper introduces the selections, installations and maintenances of batteries for communication ...



Lithium battery solution for power supply guarantee system of

I. Background of the Communication Base Station Support System The communication base station support system is the general term for a series of facilities and ...





Selection and maintenance of batteries for communication base ...

This paper focuses on the engineering application of battery in the power supply system of communication base stations, and focuses on the selection, installation and maintenance of ...



How to Select the Best ESTEL Battery Backup for Base Stations

Choose the best telecom battery backup systems by evaluating capacity, battery type, environmental adaptability, maintenance, and scalability for base stations.

[Comprehensive Guide to Telecom Batteries](#)

This comprehensive guide will delve into the types of telecom batteries, their applications, maintenance tips, and the latest advancements in battery technology.



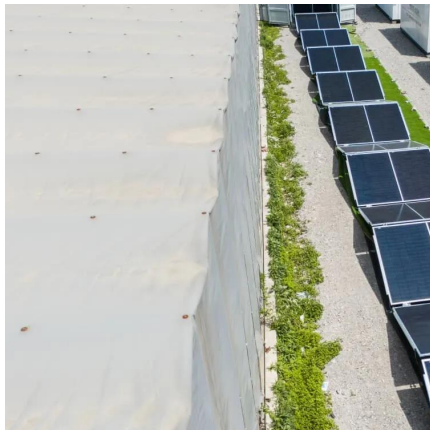
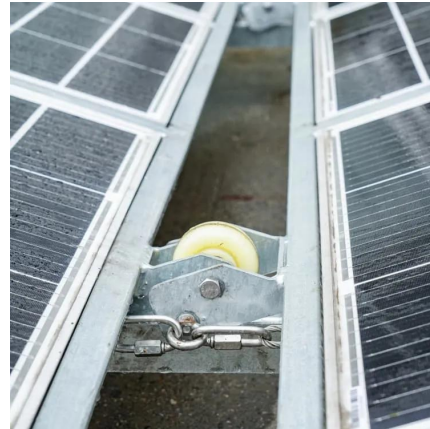
[Communication Base Station Battery Market](#)

Global Communication Base Station Battery Market Report 2022 comes with the extensive industry analysis of development components, patterns, flows and sizes. The report also ...



The 200Ah Communication Base Station Backup ...

GEM Battery GF series communication base station lead-acid batteries are used for telecom communication backup power supply, support multi-channel ...

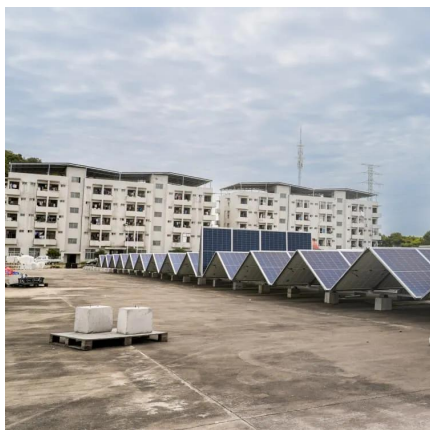


Selection and maintenance of batteries for communication base stations

This paper focuses on the engineering application of battery in the power supply system of communication base stations, and focuses on the selection, installation and maintenance of ...

NUKU ALOFA COMMUNICATION BASE STATION LITHIUM BATTERY PACK

What is a lithium-ion battery pack? Lithium-ion batteries, particularly the 18650 battery pack design, have become the industry standard for many applications due to their high energy ...



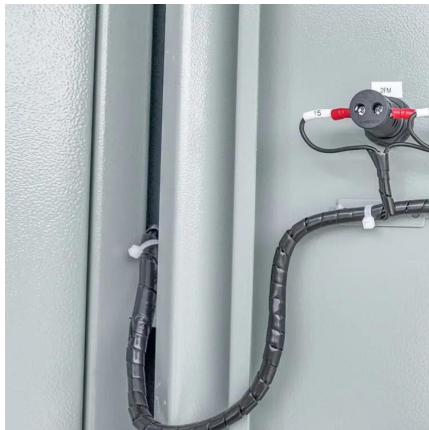
Reliable Communication Base Stations, Cheap Communication Base Stations

GEM is best communication base stations suppliers, The combination of extreme power and performance makes GEM battery perfect for a range of applications.



Communication base station energy storage battery system

Why do communication base stations use battery energy storage? Meanwhile, communication base stations often configure battery energy storage as a backup power source to maintain the ...

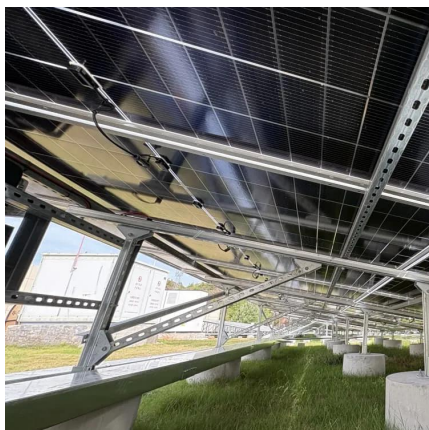


Telecom Base Station Backup Power Solution: Design Guide for ...

This guide outlines the design considerations for a 48V 100Ah LiFePO4 battery pack, highlighting its technical advantages, key design elements, and applications in telecom ...

Understanding Backup Battery Requirements for ...

Telecom base stations require reliable backup power to ensure uninterrupted communication services. Selecting the right backup battery is ...



Communication Base Station Backup Battery

ECE 51.2V lithium base station battery is used together with the most reliable LiFePo4 battery, with long span life (4000+) and stable performance. The battery pack with smart battery ...



The operation status of the battery pack of the communication base station

The operation status of the battery pack of the communication base station is mainly caused by insufficient investment in the maintenance of the battery pack. First of all, the investment in the ...



The role of the battery pack in the communication base station

Can a stepped battery be used in a communication base station backup power system? In view of the characteristics of the base station backup power system, this paper proposes a design ...

Lithium-ion Battery For Communication Energy Storage System

Lithium-ion Battery For Communication Energy Storage System The lithium-ion battery is becoming more and more common in our daily lives. This new type of battery can ...



[48V 100AH Energy Storage Lithium Battery for ...](#)

High quality 48V 100AH Energy Storage Lithium Battery for Communication Base Station from China, China's leading product market Energy Storage Lifepo4 ...



Selection and maintenance of battery for communication base station

Focused on the engineering applications of batteries in the communication stations, this paper introduces the selections, installations and maintenances of batteries for communication ...



Contact Us

For catalog requests, pricing, or partnerships, please visit:
<https://motheopreprimary.co.za>