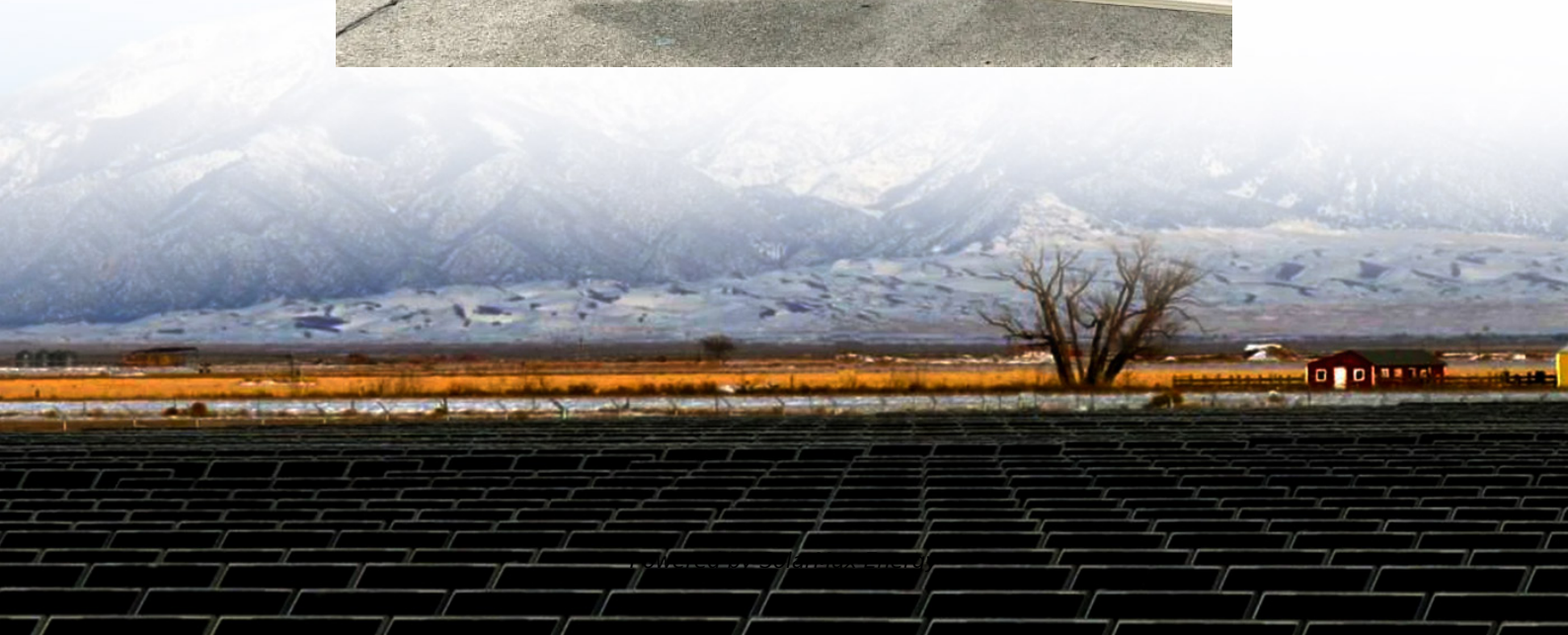


Communication Green Base Station Three Fans Explanation





Overview

This paper proposes a novel ventilation cooling system of communication base station (CBS), which combines with the chimney ventilation and the air conditioner cooling. Stack effect is employed to e.

What is a green base station solution?

The green base station solution involves base station system architecture, base station form, power saving technologies, and application of green technologies. Using SDR-based architecture and distributed base stations is a different approach to traditional multiband multimode network construction.

Are green cellular base stations sustainable?

This study presents an overview of sustainable and green cellular base stations (BSs), which account for most of the energy consumed in cellular networks. We review the architecture of the BS and the power consumption model, and then summarize the trends in green cellular network research over the past decade.

Does Ericsson have a 'green' base station design?

But the large equipment vendors too have got in on the act. Ericsson made a point of its green credentials at the recent Mobile World Congress, and launched a "green" base station design back in 2007. Its commitment extends from materials used in base station build, to the design and efficiency of the base stations themselves.

How ACS cooled a base station can save energy?

Compared with a traditional equipment room, an ACS-cooled room can save up to 70% energy. A sharp decrease in power consumption in a base station makes it possible to replace the traditional electrical power supply with solar or wind energy. Among other solutions, solar and hybrid solar-wind power has gradually been applied in base stations.

What should a base station do in a wireless communications network?



In a wireless communications network, the base station should maintain high-quality coverage. It should also have the potential for upgrade or evolution. As network traffic increases, power consumption increases proportionally to the number of base stations. However, reducing the number of base stations may degrade network quality.

Why is a base station important?

Environmental protection is a global concern, and for telecom operators and equipment vendors worldwide, developing green, energy-saving technologies for wireless communications is a priority. A base station is an important element of a wireless communications network and often the main focus of power saving in the whole network.



Communication Green Base Station Three Fans Explanation



[Green and Sustainable Cellular Base Stations: An](#)

This study presents an overview of sustainable and green cellular base stations (BSs), which account for most of the energy consumed in ...

Green base station

Traditional base station sites are located indoors, where the typical temperature of 25°C is maintained with high energy-consuming air conditioning. By increasing the ambient ...



[EK-SG-R01 Communication container station-](#)

EK-SG-R01 is a large outdoor base station with large capacity and modular design. This series of products can integrate photovoltaic and wind clean energy, energy storage batteries, and ...



[Green Base Station Solutions and Technology](#)

This paper discusses green base stations in terms of system architecture, base station form, power saving technologies, and green technology applications. It explores ...



Green Base Station Solutions and Technology

This paper discusses green base stations in terms of system architecture, base station form, power saving technologies, and green ...



Research on ventilation cooling system of communication base stations

This paper proposes a novel ventilation cooling system of communication base station (CBS), which combines with the chimney ventilation and the air conditioner cooling.



Glossary: Base station (in communications)

[A mobile phone base station is] a transmission and reception station in a fixed location, consisting of one or more receive/transmit antenna, microwave dish, and electronic circuitry, ...





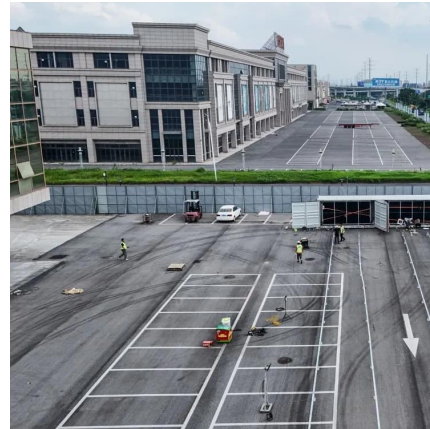
Green and Sustainable Cellular Base Stations: An

Energy efficiency and renewable energy are the main pillars of sustainability and environmental compatibility. This study presents an ...



(PDF) Key Technologies for Green Communications: ...

Several mainstream green communication key technologies are introduced and some representative research results are listed. Finally, open ...



Energy-Efficient Base Stations

In order to effectively improve the energy efficiency of the future mobile networks, it is thus important to focus the attention on the Base Station.



Optimizing the power supply design for

Communication base station power system design scheme When selecting a power system design scheme, it is necessary to consider a variety ...



Base Station , Analog Devices

Base Station What is a Base Station? Definition A base station (or basestation) is a wireless transceiver at a fixed location (e.g. atop a telephone pole) which is part of a wireless ...

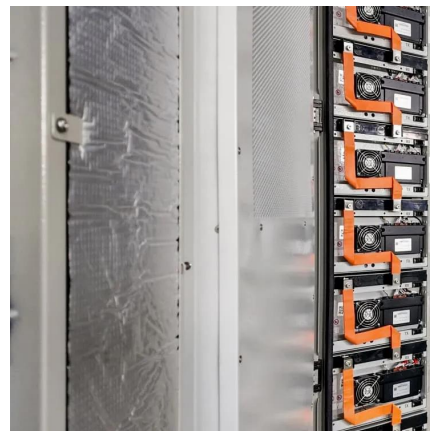


What is Base Station?

Nowadays, networking has become a crucial part of our daily lives. To implement network services for users, base station plays an essential role to constitute a ...

Energy-Efficient Base Stations , part of Green Communications

This chapter aims a providing a survey on the Base Stations functions and architectures, their energy consumption at component level, their possible improvements and the major problems ...



Cooling Fans for Mobile Base Stations

Mobile base stations are critical components of modern telecommunications networks, enabling wireless communication between mobile devices and the core network. ...



[Learn What a 5G Base Station Is and Why It's Important](#)

A 5G base station is the heart of the fifth-generation mobile network, enabling far higher speeds and lower latency, as well as new levels of connectivity. Referred to as gNodeB, 5G base ...



base station in 5g

A 5G base station is a complex system that integrates advanced RF technology, digital signal processing, and network architecture to deliver ...

[Research on future 6G green wireless networks](#)

It is imperative to thoroughly evaluate current state and challenges facing green and low-carbon mobile communication network technologies as well as delve into potential energy ...



[Green and Sustainable Cellular Base Stations: An](#)

Energy efficiency and renewable energy are the main pillars of sustainability and environmental compatibility. This study presents an overview of sustainable and green cellular ...



EMF

A base station is made up of antennas connected by cable to electronic (radio) equipment usually housed in a room or 'shelter'. Some base stations have ...



IMPROVING GREEN COMMUNICATION BY RADIATION ...

Radio Technology refers to a environment friendly approach towards the mobile communication. Nowadays, due to tremendous development in mobile technology, here are many issues ...

Radio Base Stations for Secure Communication

In the world of radio communications, a radio base station plays a vital role in ensuring reliable and seamless communication across a wide area. Whether used in mobile networks, ...



9

Various approaches have been proposed to reduce the energy consumption of an RBS, for instance, passive cooling techniques, energy-efficient backhaul solutions, and distributed base ...



Analyze the Types of Communication Stations , SpringerLink

This chapter provides an overview of the different types of communication networks and stations. Generally, there are mainly two types of communication networks: ...



Base Transceiver Station: Core Functionality Explained

Discover what a Base Transceiver Station is and how it's pivotal in mobile communication networks. Unlock the essentials of BTS functionality here.

Contact Us

For catalog requests, pricing, or partnerships, please visit:
<https://motheopreprimary.co.za>