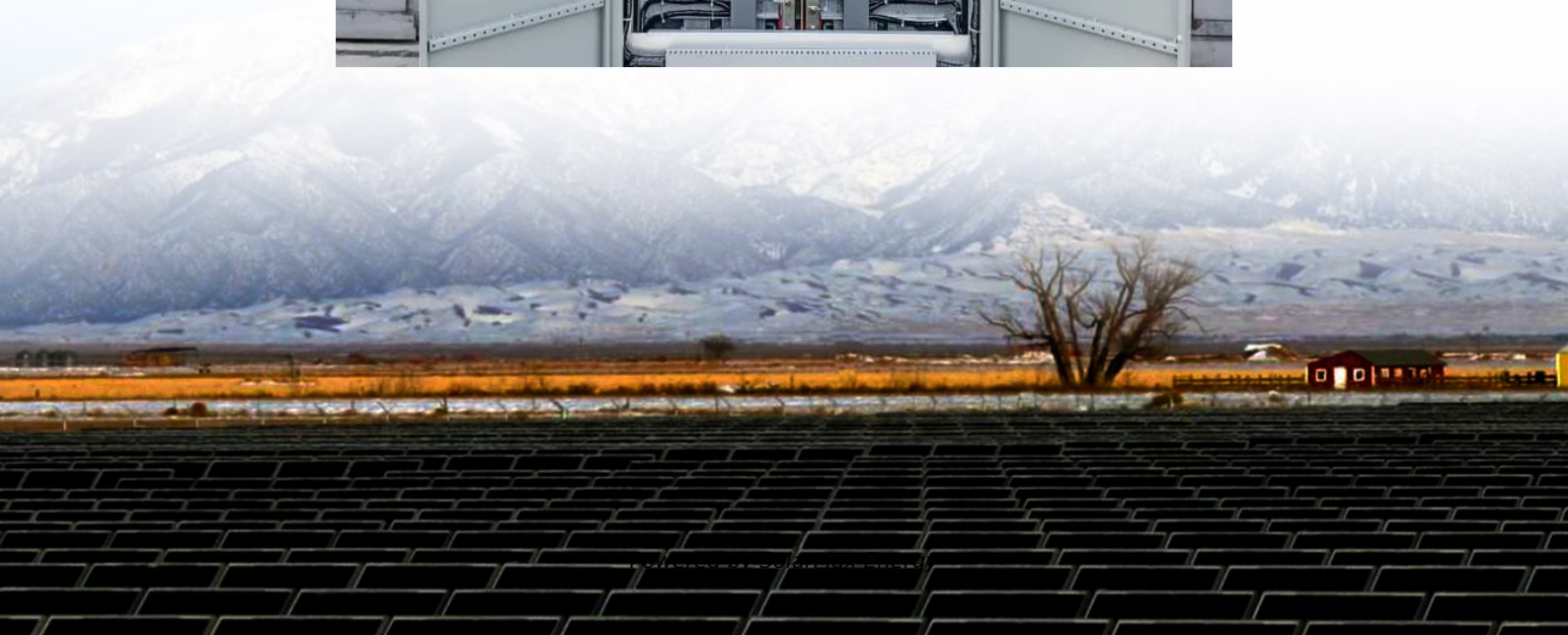


Can small batteries be used with inverters





Overview

Yes, you can attach a small inverter directly to a battery, but doing it safely requires understanding voltage compatibility, wire sizing, and overload risks. Many DIYers assume it's as simple as clipping on cables—until sparks fly or devices fail. Can a 12V battery be used as an inverter?

If you are using a 12V battery, then the input voltage of the inverter must match the battery voltage. If the specifications of the battery and the inverter do not match, the system will not operate stably and may even damage the equipment. In addition, choose the right inverter power and battery capacity for your home or commercial needs.

Do inverters have to be connected to a battery?

Above 200 watts of maximum power output an inverter has to be connected to a battery. This avoids fuses blowing in vehicular electric systems and the subsequent hunt for locating and replacing a blown outlet fuse. Most battery clip cables are not equipped with a fuse. Battery clips are only used for brief temporary connections to a 12 volt battery.

Do inverters and batteries need to match?

The inverter and batteries must match in terms of voltage, capacity, and power output. If you are using a 12V battery, then the input voltage of the inverter must match the battery voltage. If the specifications of the battery and the inverter do not match, the system will not operate stably and may even damage the equipment.

Can a micro inverter battery backup system work?

The short answer is yes they can! In fact a number of micro inverter battery backup systems are already operating here and abroad. The longer answer gets a bit technical – but I'll try to keep it as simple as I can!.

What happens if a battery is not connected to the inverter?



A proper connection between the battery and the inverter helps prevent overcharging and overdischarging. Improper connection between the inverter and the battery may result in the inverter failing to accurately read the battery's voltage information, which may cause the battery to be overcharged or over-discharged.

Can a solar inverter be used with a lithium battery?

Integrating a solar inverter with a lithium battery can take your renewable energy setup to the next level. This combination allows for better energy storage, improved efficiency, and greater resilience during power outages. LiFePO4 batteries are particularly well-suited for solar applications because their thermal stability and long cycle life.



Can small batteries be used with inverters



[Can an Inverter Be Too Big for Your Battery System?](#)

How to Calculate the Right Inverter Size for Your Battery Match the inverter's continuous wattage rating to the battery's discharge capacity. For a 12V 200Ah battery (2.4kWh), a 2000W inverter ...

How to Safely Connect a Battery to an Inverter: A Step-by-Step ...

Learn how to safely connect your batteries to your inverter with our guide. Avoid common wiring mistakes to optimize performance and extend system life.



[Can An Inverter Be Charged With A Generator? - ...](#)

Modern generators can seamlessly charge deep-cycle batteries through a built-in battery charger. DC to AC Conversion: The inverter draws ...

Looking for a Mini Inverter for Your Place? Choose Tata Green Battery

Looking for a compact inverter for your home? Tata Green Battery offers reliable, efficient mini inverters designed for Indian power needs and everyday convenience.



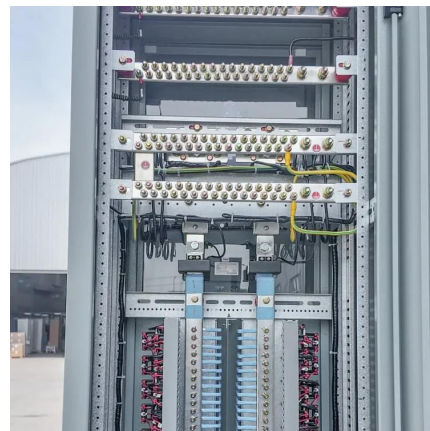
Can a Battery Be Too Big for an Inverter?

Yes, a battery can be too big for an inverter, leading to inefficiencies and potential safety issues. Oversized batteries may not discharge correctly or could exceed the inverter's ...



Can I Attach My Small Inverter Directly to the Battery?

Yes, you can attach a small inverter directly to a battery, but doing it safely requires understanding voltage compatibility, wire sizing, and overload risks. Many DIYers assume it's ...



What Type of Battery Should I Use for My Inverter?

When using an inverter, it is essential to use the correct type of battery to enhance the lifespan of both the inverter and the batteries. The ...





Can You Use a Solar Battery in a Normal Inverter?

Unlock the potential of your solar power system! Learn how to use solar batteries in normal inverters for efficient energy solutions and enhanced ...



Can You Charge a Battery While Using an Inverter?

A small battery can be powered up by a charger as well. The advantage of a solar panel is you can charge the battery without overheating, provided you have a working charge controller.

Understanding Battery Capacity and Inverter Compatibility

How Long Can a 100 Ah Battery Run a 1000W Inverter? To estimate how long a battery can run an inverter, we need to consider the power draw and the battery's capacity. ...



hybrid inverter and batteries

I installed a 5kw system, with a 5k sma grid tie inverter. I was looking at a solar generator with 240v capabilities, but started thinking, could I ...



[How to Connect a Large or Small Inverter to a Battery](#)

This blog answers questions about which inverters can be powered by 12V DC accessory outlets (cigarette lighter sockets) and which require wiring directly to a battery.



AC Coupling: Microinverters and Batteries , BENY New Energy

Microinverters can definitely work with battery backups. You just have to employ a method known as "AC Coupling," in which an AC battery inverter is used to link the batteries ...

Can Inverters and batteries be installed outside? : r/SolarUK

A quick question, I am currently quoting solar system and my house is small and don't have a garage. Some sales agents were telling me I can install batteries and inverters outdoor but ...



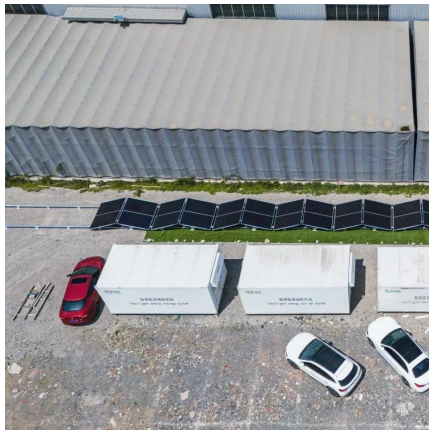
[Can I Use a 12V 7AH Battery with an Inverter?](#)

Yes, you can use a 12V 7Ah battery with an inverter, provided that the inverter is compatible with a 12V input. This configuration is suitable for low-power applications, such as ...



[How to Connect a Large or Small Inverter to a Battery](#)

This blog answers questions about which inverters can be powered by 12V DC accessory outlets (cigarette lighter sockets) and which ...



[Can You Use a Power Inverter to Charge a Battery](#)

Power inverters are versatile devices that convert direct current (DC) to alternating current (AC). This conversion is crucial for charging ...

Compatibility of Lithium-Ion Batteries with Existing Inverters

This blog post will walk you through the essentials of lithium-ion batteries, their benefits, and the steps to seamlessly integrate them with your current inverter setup. From practical examples ...



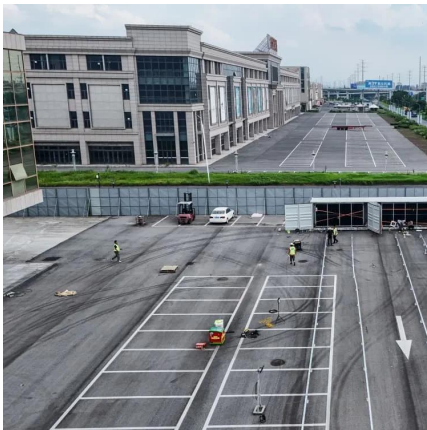
[How to Safely Connect a Battery to an Inverter: A ...](#)

Learn how to safely connect your batteries to your inverter with our guide. Avoid common wiring mistakes to optimize performance and extend ...



[AC Coupling: Microinverters and Batteries , BENY ...](#)

Microinverters can definitely work with battery backups. You just have to employ a method known as "AC Coupling," in which an AC battery ...



Frequently Asked Questions About Power Inverters , DonRowe

In these cases, it's a good idea to have an extra deep cycle battery for the inverter (installed close to the inverter), cabled to the starting battery. It is recommended to install a battery isolator ...

Understanding Battery Capacity and Inverter Compatibility

When pairing a 100 Ah lithium battery with a 1000 watt inverter, it is crucial to ensure compatibility to achieve optimal performance. Lithium batteries typically offer better ...



[How to Calculate How Long an Inverter Will Last](#)

How long an inverter lasts depends on the battery and load. This simple guide explains how to calculate inverter runtime of any size.



Can I Use A UPS As An Inverter? (+ types of UPS)

The AC-power supply to the UPS is used to maintain the battery state of charge at a sufficient level to keep the inverter operational. It is true to ...

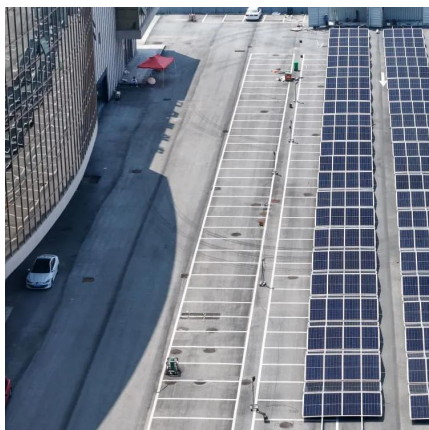
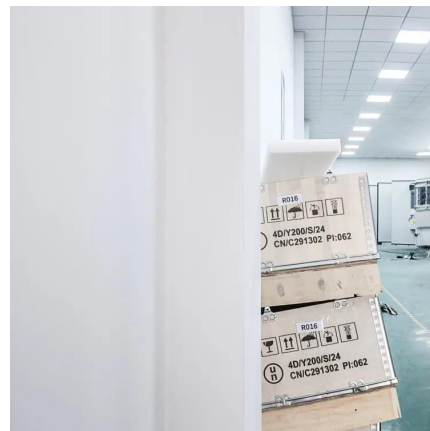


Are micro inverters & battery backup compatible?

With the growth in the use of micro inverters, I'm starting to get more and more emails asking: can micro inverters be used in off grid (or ...

Can I Attach My Small Inverter Directly To The Battery?

Yes, you can connect your small inverter straight to the battery. This method allows the inverter to draw power directly from the battery. Connecting an inverter directly to a battery ...



Are micro inverters & battery backup compatible?

With the growth in the use of micro inverters, I'm starting to get more and more emails asking: can micro inverters be used in off grid (or hybrid) solar power systems? The ...



Contact Us

For catalog requests, pricing, or partnerships, please visit:
<https://motheopreprimary.co.za>