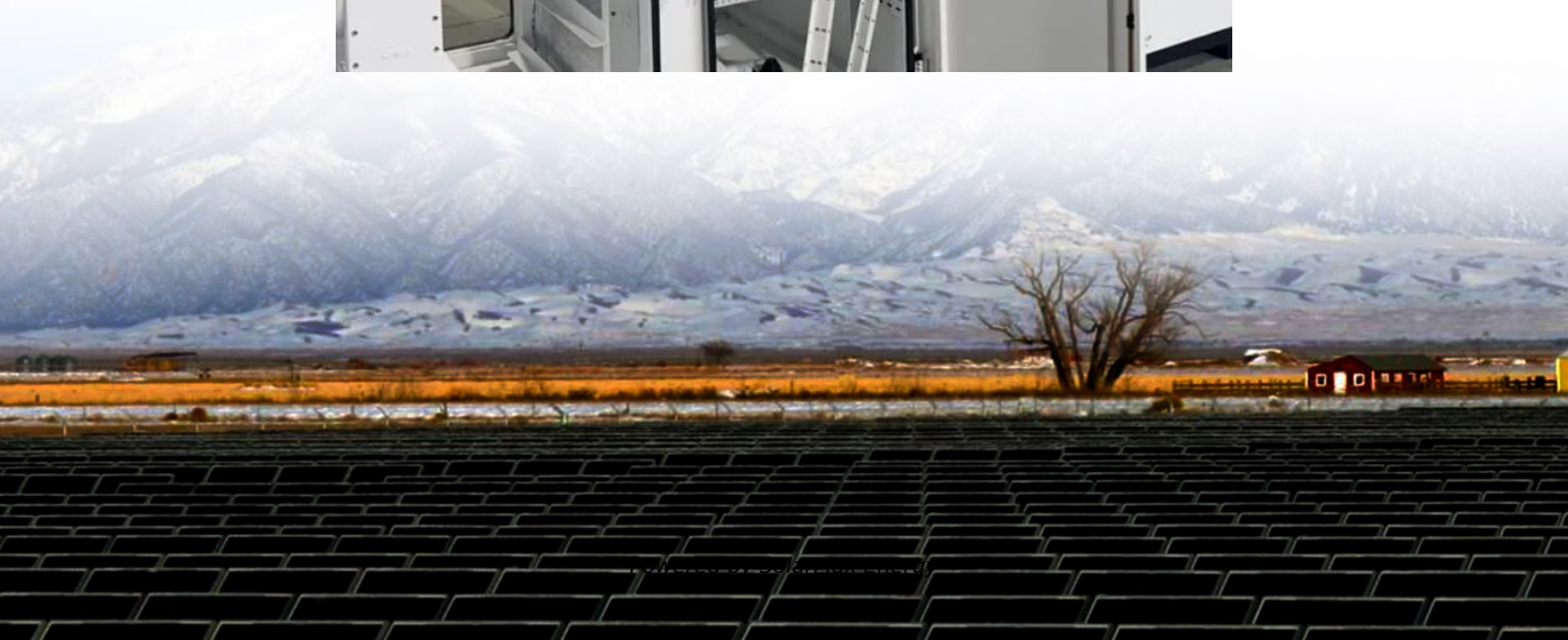


Can 10w solar power charge an 8w water pump inverter





Overview

Yes, you can run a water pump on a solar inverter as long as the inverter is properly sized for the pump's power requirements. Ensure the inverter has a sufficient continuous power rating for the pump's running wattage and a surge power rating for the starting wattage. How to choose a solar pump inverter?

Understand the rated power of the water pump. Normally, the rated power of the solar pump inverter should be slightly more than or equal to the rated power of the water pump to ensure that the pump can be operated normally. For instance, if the water pump's rated power is 2kW, the selected inverter should have a rated power of 2kW or higher.

What is a solar power inverter?

3 2. Solar On-Grid Inverter 4 3. Solar Power Off Grid Inverter In the realm of solar energy solutions, a common application is the utilization of solar inverters to drive water pumps. Especially in areas where conventional grid electricity is scarce or unreliable, solar-powered water pumps offer a sustainable and efficient alternative.

What is a solar pump inverter?

Solar Pump Inverter A solar pump inverter is a specialized type of inverter designed explicitly for operating water pumps using solar power. It directly converts the DC power generated by solar panels into AC power to drive the pump. **Advantages:** **Direct Drive:** The direct conversion process is efficient and reduces energy loss.

Can a solar inverter drive a water pump?

Let's explore them. Three solar inverters can drive a water pump and convert photovoltaic direct current into alternating current. It is an inverter designed for running water pumps using solar power. It directly transforms the direct power produced by solar panels into an alternating current to drive the pump.

How much power does a solar pump inverter have?



1.5kW solar pump inverter for sale, with AC 3.8A output current at 3-phase, 380V, DC voltage range (280V, 750V), and recommended DC MPPT range (350V, 750V). With IP20 protection class, the solar pump inverter works at (-10°C, 40°C). The solar pump inverter supports AC and DC input, the power factor is >0.99 , and the humidity is less than 95%RH.

How does a solar water pump work?

The solar panels charge the batteries via the controller, and the inverter then converts the stored DC power from the batteries to AC to run the water pump. Advantages: Storage Capability: Allows for energy storage, ensuring pump operation even without sunlight.



Can 10w solar power charge an 8w water pump inverter

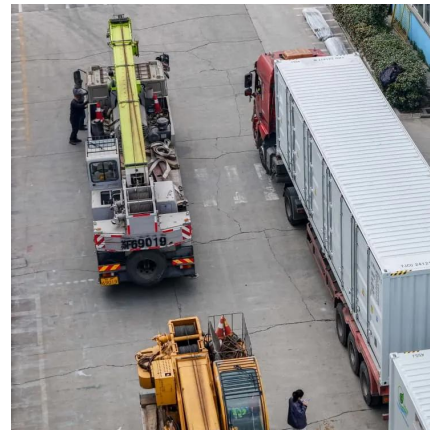


Best Solar Water Pump Inverters for Efficient Off-Grid Power ...

Harnessing solar energy to power water pumps requires reliable and efficient inverters that convert solar DC power into usable AC power. Below is a curated selection of ...

[What Kind of Solar Inverter Can Drive a Water Pump?](#)

While these inverters are perfect for general solar energy applications, they are not typically ideal for driving water pumps in remote locations, where grid power may be unavailable or unreliable.



How Can a Solar Pump Inverter Improve Water System Efficiency

Discover how a KUVO solar pump inverter boosts efficiency, supports off-grid operation, and enhances motor control. Learn how to choose the right model for your water ...

[The Only Inverter Size Chart You'll Ever Need](#)

We created a comprehensive inverter size chart to help you select the correct inverter to power your appliances. The need for an inverter size ...



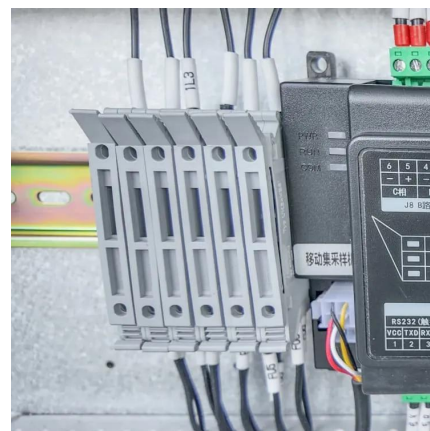
Essential Guide to Solar Inverters for Water Pump Systems

Conclusion: Solar inverters are the cornerstone of solar-powered water pump systems, unlocking the potential of renewable energy for sustainable water access. By understanding the key ...



What Size Solar Water Pump do I Need?

As a water pump system that uses solar energy as a power source, the importance of solar water pumps is becoming increasingly prominent. With the increasing ...



Low cost and high efficiency: Recommended solar inverter types

...

If the inverter power is too small, it will not be able to provide enough starting and running current for the water pump, causing the water pump to fail to work properly, and may ...





[Calculate Battery Size For Any Size Inverter \(Using ...](#)

So I have made it easy for you, use the calculator below to calculate the battery size for 200 watt, 300 watt, 500 watt, 1000 watt, 2000 ...



Low cost and high efficiency: Recommended solar inverter types

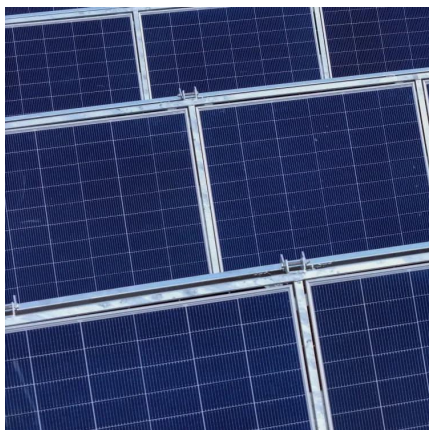
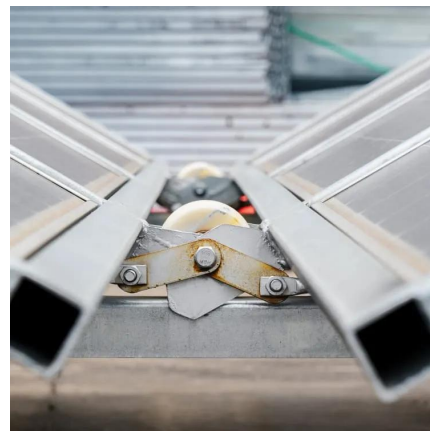
...

This article explores in depth the types of solar inverters suitable for small-power water pumps, aiming to provide accurate inverter selection references for agricultural irrigation, ...



AISITIN 10W Solar Water Pump for Outdoor, Foldable Solar Fountain Pump

About this item [10W Efficient Solar Panel]: This 2023 upgraded solar water pump kit uses a highly efficient solar panel with a maximum output of 10W, even weak sunlight can ...



Choosing the Right Solar Water Pump Inverter for Your System: A

Firstly, one must consider the type of electrical load that the solar water pump inverter needs to support. Electrical loads can be classified as resistive, inductive, or capacitive, and each type ...

...



Which Solar Inverter Can Drive Water Pump?

As the solar energy market continues to expand, the role of inverters becomes increasingly vital. Whether you're looking to power your ...



What Size Solar Pump Inverter Do I Need to Run a Pump?

Yes, you can run a water pump on a solar inverter as long as the inverter is properly sized for the pump's power requirements. Ensure the inverter has a sufficient continuous ...

What Kind of Solar Inverter Can Drive a Water Pump?

Selecting the right solar inverter for driving a water pump depends on various factors, including location, grid availability, budget, and specific ...



What Kind of Solar Inverter Can Drive a Water Pump?

While these inverters are perfect for general solar energy applications, they are not typically ideal for driving water pumps in remote locations, where grid ...



Hybrid solar pump inverter

With 15 years at the forefront, we're the global leaders in hybrid Solar Water Pump Inverter production. Our inverters are known for advanced tech and ...

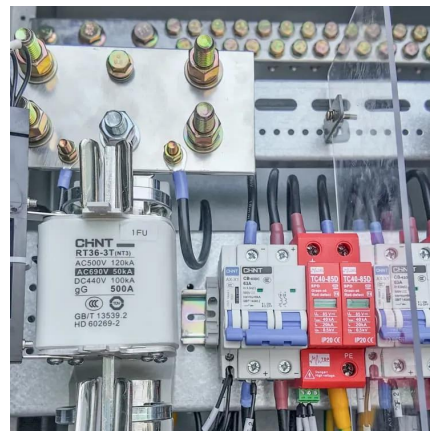


10 Best Solar Powered Irrigation Pumps to Optimize Your ...

2 days ago · Keep your garden thriving in 2025 with the top 10 solar-powered irrigation pumps--discover which ones will revolutionize your watering routine!

Solar Inverter for Pumps , Efficient Pump Inverter for ...

It ensures continuous water flow without reliance on traditional grid power, making it a sustainable choice for farms, rural communities, and remote water ...



What Kind of Solar Inverter Can Drive a Water Pump?

This solar off grid inverter type takes a more comprehensive approach by incorporating solar panels, a charge controller, and batteries. The ...



What is Solar Water Pump? , inverter

A solar water pump system, also known as a photovoltaic water pumping system, is a device that directly converts solar energy into ...

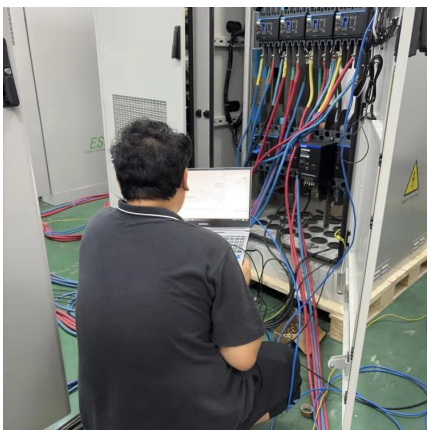


What Size Solar Pump Inverter Do I Need to Run a ...

Yes, you can run a water pump on a solar inverter as long as the inverter is properly sized for the pump's power requirements. Ensure the ...

Essential Guide to Solar Inverters for Water Pump Systems

This comprehensive article delves into the intricacies of solar inverters, empowering you with the knowledge to optimize water access and usher in a greener future.



Solar Pump Inverters: The Ultimate Guide to Efficiency, Cost ...

Discover how solar pump inverters revolutionize water pumping systems. Learn about benefits, key features, and how to choose the best solar inverter for your agricultural or ...



What Kind of Solar Inverter Can Drive a Water Pump?

This solar off grid inverter type takes a more comprehensive approach by incorporating solar panels, a charge controller, and batteries. The solar panels charge the ...

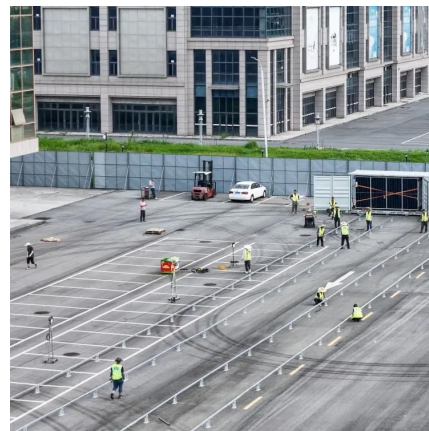


Water Pump and Inverter Compatibility: The Ultimate Guide

What To Know The answer to this question depends on the type of water pump and the characteristics of the inverter. Using an inverter with these pumps can lead to ...

What Kind Of Solar Inverters Can Drive a Water Pump?

In short, selecting the right solar inverter for driving a water pump depends heavily on grid availability, location, and other application requirements. However, the best type is a ...



The Basics of Solar Water Pumps

Solar water pumps are a great resource to power a pump in any geographic location. Solar pump applications make economic sense because they provide ...



Contact Us

For catalog requests, pricing, or partnerships, please visit:
<https://motheopreprimary.co.za>