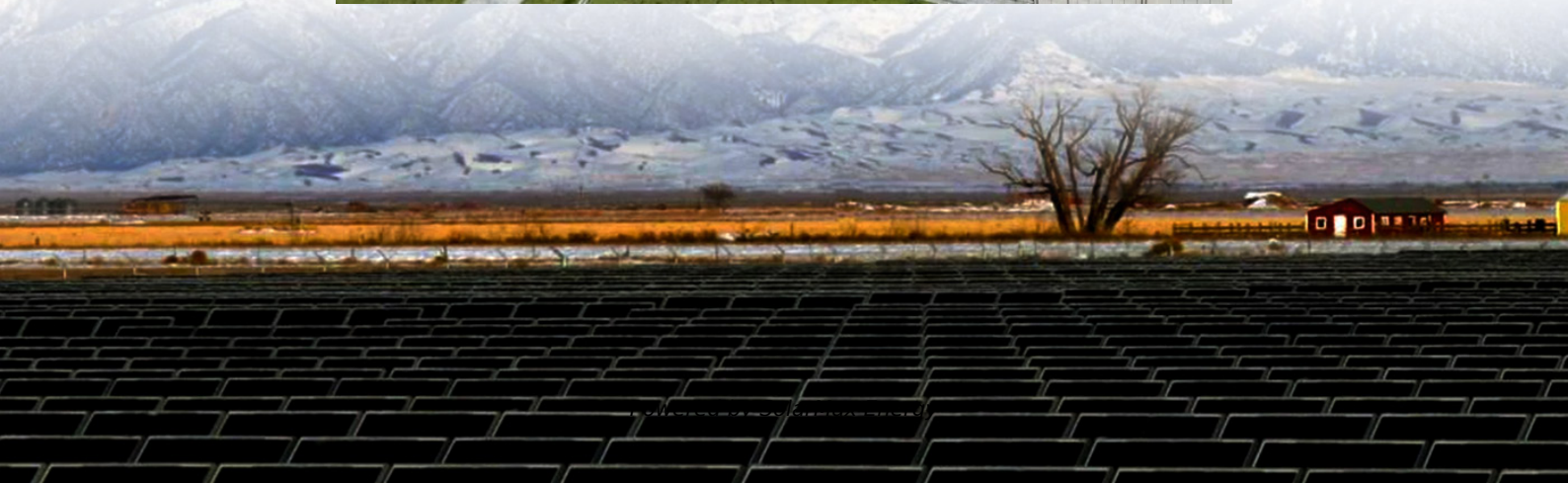


Base station communication equipment needs to be replaced every few years





Overview

What are the different types of base stations?

Base stations can range in size from simple all-weather cabinets to equipment bunkers the size of a small house. Ice bridge or waveguide bridge.

What is a base transmitter station (BTS)?

Technically speaking, they are called Base Transmitter Stations (BTS). You might see 'cell site' and 'cell tower' used interchangeably, but these terms are not synonymous. A cell site or BTS encompasses all the equipment needed to transmit and process cellular signals between devices.

Why is reliable communication important in firefighting operations?

Reliable communication is essential in firefighting operations. Firefighters need to be able to communicate with each other and with the incident commander to coordinate their efforts and ensure their safety. Firefighters face radio communication challenges due to interference, dead zones and equipment failure on a daily basis.

How do fire departments buy radios?

Leasing or financing options: Another option fire departments can explore is leasing or financing the radios to spread out the purchase cost over time. This can help make the cost more manageable and allow fire departments to purchase radios that meet the NFPA 1802 standard without having to pay the full cost upfront.

How are antennas connected to a base station?

Each antenna is connected to the base station by several cables. Monopole towers have a conduit down the center to house the cables, but on a lattice tower, the cables run down the outside. Depending on the installation, they will run over an ice bridge so they are elevated.



How do fire departments get funding for new radios?

Funding for the purchase of new radios that meet the NFPA 1802 standard can be obtained by fire departments through various means, including: Applying for grants: Grants from federal, state or local agencies typically view radio purchases as a high-priority program.



Base station communication equipment needs to be replaced every



[How to plan for your equipment replacement](#)

How police departments should approach evaluating whether their radios need upgrade or replacement and whether grants can help.

[The Base Station in Wireless Communications: The ...](#)

Base station, also known as BTS (Base Transceiver Station), is a key device in wireless communication systems such as GSM. Equipped with ...



[10 Best Ham Radio Base Station For Long Range ...](#)

In this article, we have described details of different Ham radio base station that will help you to select the best one based on your needs.



Repairs, Upgrades and Checks

Field repairs are typically limited to replacement of antennas, knobs, switches, display boards, speakers, and microphones. For network elements, field repair is now limited to swapping

...



Household Items That Need to Be Replaced

As a rule of thumb, disposable fire extinguishers need to be replaced every 10-12 years. Rechargeable extinguishers generally have longer service lives but should be inspected ...



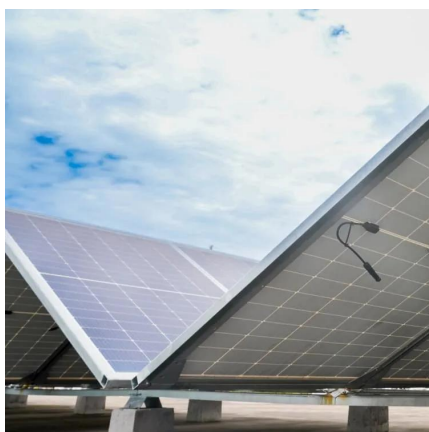
Guide to Base Station Communications Equipment , Office of ...

This guide presents background information to help law enforcement agencies analyze their base station equipment needs and select superior equipment to provide reliable communication ...



Test Report for Conventional Fixed Station Interface for ...

It will be many years, however, before all of the existing equipment and infrastructure will be replaced or upgraded with interoperable equipment.





Emergency Communications Systems Value Analysis Guide

This document identifies general lifecycle lengths of components, such as handheld devices (e.g., 2-10 years) or fixed station equipment and infrastructure (e.g., 7-25 years).



Best Practices for Safe & Eco-Friendly Equipment ...

Whether you're upgrading your communications systems for better efficiency and productivity or gathering broken radios to take in for repairs, ...



5G base station architecture, Part 1: Evolution

(A few days after this Summit, Nokia agreed to buy Alcatel-Lucent which will strengthen their base station infrastructure as well as to get Nokia ...



Base Station System Structure

The intent of this section is to explore the role of base stations in communications systems, and to develop a reference model that can be used to describe and compare base station software ...



[NFPA 1802: Improving standards for firefighter radios](#)

Firefighters face radio communication challenges due to interference, dead zones and equipment failure on a daily basis.



[Emergency Communications Systems Value Analysis Guide](#)

Communications investments are among the most significant, substantial, and long-lasting capital expenditures that public safety agencies make. There is no simple solution for ...

[Do I Need to Replace My Implants Every 10 Years?](#)

3. Do I Need to Replace My Implants Every 10 Years? Plastic surgeons hold varying opinions on whether breast implant recipients will need ...



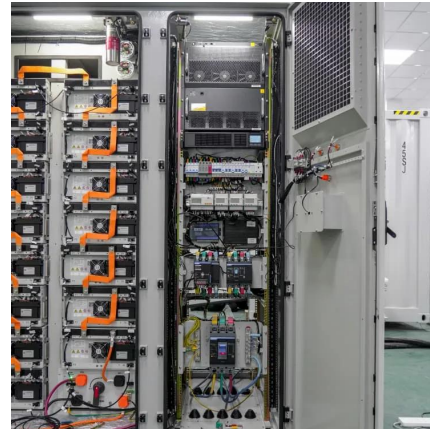
A Field Guide To The North American Communications Tower

Maintaining and upgrading communication base stations is essential for reliable and efficient wireless network operation. Regular maintenance includes inspection, cleaning, software ...



When is the Best Time to Upgrade your Public Safety Communication

How do we decide when it's time to upgrade our public safety communication technologies? Do we look at it like a fire truck and say after 15 years it needs to be replaced or ...



A Field Guide To The North American Communications Tower

One way that cell technology is changing is the advent of Device to Device (D2D) technology, also known as LTE Direct. This turns every D2D-enabled device into a part of the ...

AED Warranties, Pads, and batteries: When does ...

AED Electrode Pads The electrodes, or "pads" of an AED are attached to a victim in order to deliver a shock to the heart. They are made of ...



NFPA 1802: Improving standards for firefighter radios

Firefighters face radio communication challenges due to interference, dead zones and equipment failure on a daily basis.



Base Station's Role in Wireless Communication Networks

What is a base station? A base station is a critical component of wireless communication networks. It serves as the central point of a network that connects various devices, such as ...



How Often Should You Replace Your Modem?

For example, a new DOCSIS standard is usually introduced every four to seven years for cable internet. That means you should expect to replace your cable ...

When is the Best Time to Upgrade your Public Safety ...

How do we decide when it's time to upgrade our public safety communication technologies? Do we look at it like a fire truck and say after 15 ...



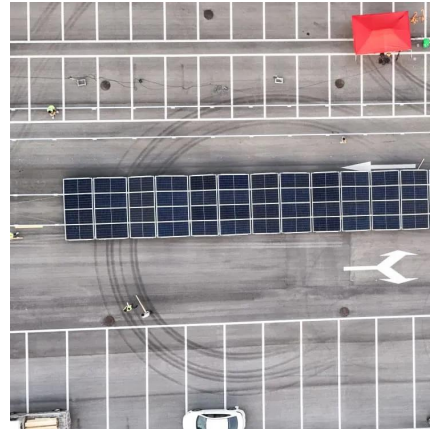
Is it necessary to replace router/gateway every 2 years or so

I don't know much about Wi-Fi or the equipment but we use a gateway- router/modem combo. After about 2 years we notice a lot of issues and spend a few months trying to figure out a way ...



How are communication base stations maintained and upgraded

Maintaining and upgrading communication base stations is essential for reliable and efficient wireless network operation. Regular maintenance includes inspection, cleaning, software ...



When Emergency Responder Communication Enhancement ...

These systems are known as in-building emergency responder communications enhancement systems (ERCES). You may also hear them referred to as bi-directional antenna ...

Contact Us

For catalog requests, pricing, or partnerships, please visit:
<https://motheopreprimary.co.za>