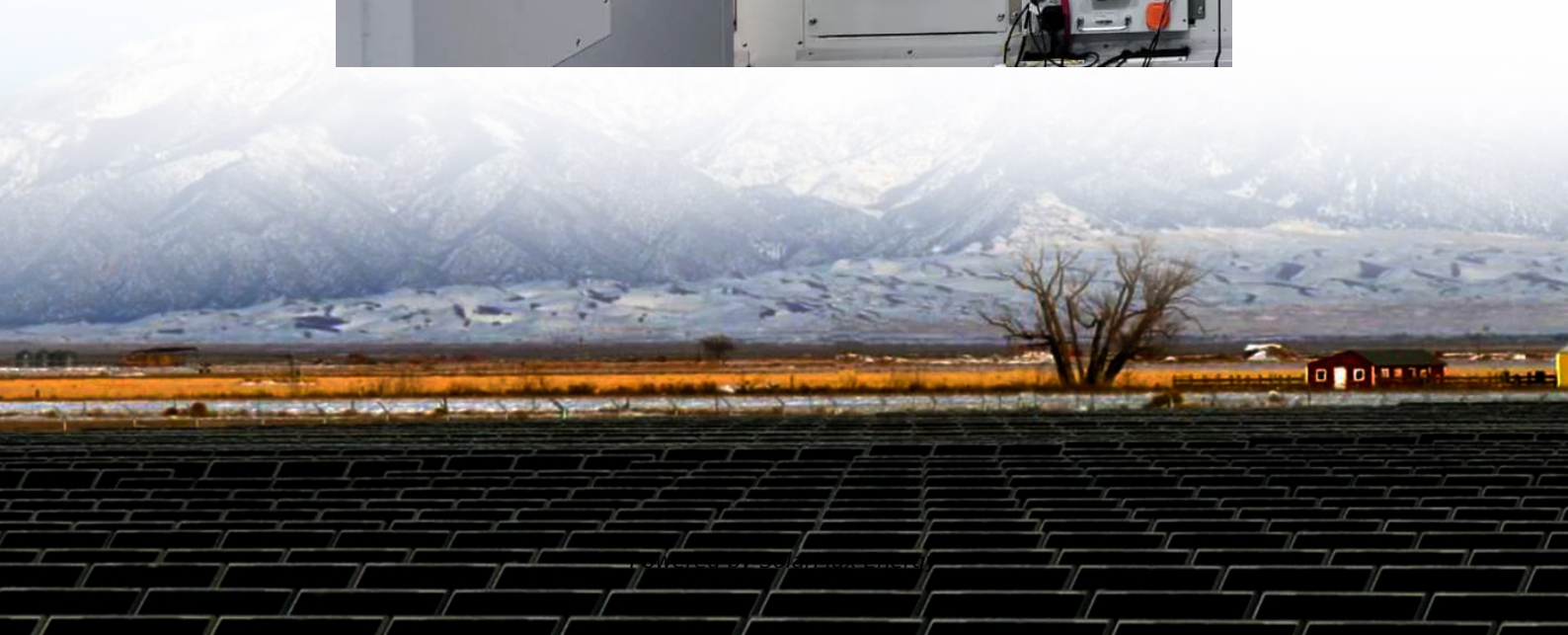


Base station battery charging current regulation





Overview

What is 1926.441 - batteries & battery charging?

1926.441 - Batteries and battery charging. Batteries and battery charging. Batteries of the unsealed type shall be located in enclosures with outside vents or in well ventilated rooms and shall be arranged so as to prevent the escape of fumes, gases, or electrolyte spray into other areas.

What does the proposed energy conservation rule mean for battery chargers?

The proposed rule would have established amended energy conservation standards for battery chargers. All planned dates are preliminary and subject to change. DOE undertook a rulemaking that concluded with a final rule in February 2016 to established new and amended energy conservation standards for battery chargers.

What is a battery charging area?

4. Action "Battery charging" areas where power industrial truck batteries are charged only--no maintenance is performed, batteries are not removed from the trucks and no electrolyte is present in the area--are not subject to the requirement of 29 CFR 1910.178 (g) (2).

What does OSHA 1926.441 mean for battery charging?

The Occupational Safety and Health Administration (OSHA) standards address battery charging areas in the construction industry in OSHA 1926.441, a rule on "batteries and battery charging."

Can a battery charger be exempted from the energy conservation standard?

DOE's Office of Hearings and Appeals has not authorized exception relief for battery chargers. For information on further guidance and answers to frequently asked questions on all covered products, see DOE's Further Guidance database. DOE has not exempted any state from this energy conservation standard.



What is in the battery chargers conservation standard rulemaking docket eere-2008-bt-std-0005?

The battery chargers conservation standard rulemaking docket EERE-2008-BT-STD-0005 contains all notices, public comments, public meeting transcripts, and supporting documents pertaining to this rulemaking. There is no public meeting scheduled at this time. The comment period is closed.



Base station battery charging current regulation



[Battery Chargers , Department of Energy](#)

These regulations cover statistical sampling plans, certified ratings, certification reports, record retention, and enforcement. More information on these regulations is available [here](#).

eCFR :: 29 CFR 1926.441 -

§ 1926.441 Batteries and battery charging. (a) General requirements. (1) Batteries of the unsealed type shall be located in enclosures with outside vents or in well ventilated rooms and shall be ...



1926.441

Charging apparatus shall be protected from damage by trucks. When batteries are being charged, the vent caps shall be kept in place to avoid electrolyte spray. Vent caps shall be maintained in ...

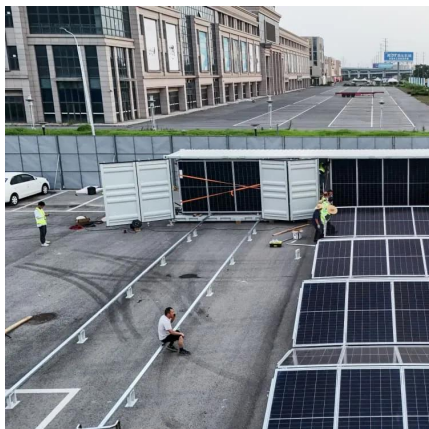
[Energy Storage for Communication Base](#)

The one-stop energy storage system for communication base stations is specially designed for base station energy storage. Users can use the energy storage ...



Performance Analysis of VRLA Battery for DC Load at

Abstract -The high level of power outage in Sukabumi-Cianjur area has influenced the operations of telecommunication industry in the vicinity. This has shortened the battery life at the Base ...



Electric Vehicle Charging Stations

Charging the growing number of EVs in use requires a robust network of stations for both consumers and fleets. The Alternative Fueling Station Locator allows users to search for public ...



An optimal dispatch strategy for 5G base stations equipped with battery

The escalating deployment of 5G base stations (BSs) and self-service battery swapping cabinets (BSCs) in urban distribution networks has raised concer...





Battery Chargers , Department of Energy

These regulations cover statistical sampling plans, certified ratings, certification reports, record retention, and enforcement. More information on these ...

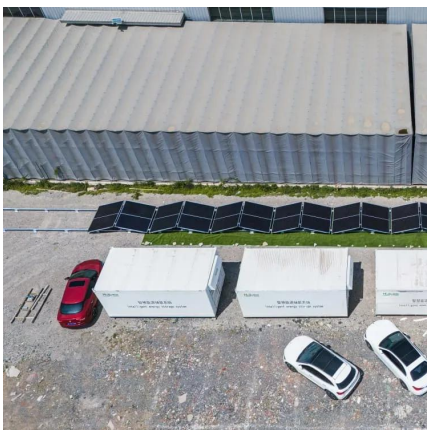


Maintenance Points for Telecom Base Station Batteries

When the charging current does not decrease for 3 consecutive hours, the charging is deemed to be terminated. (6) The float charge voltage of the battery is set according to the product ...

46 CFR Part 111 Subpart 111.15 -

A large battery installation is one connected to a battery charger that has an output of more than 2 kW computed from the highest possible charging current and the rated voltage of the battery ...



Explain the principle of voltage and current regulation ...

During the charging process, the station only regulates the current. The output voltage is set only once, at the beginning of charging, it will be ...



Taking Advantage of Spare Battery Capacity in Cellular Networks ...

However, through frequency regulation (FR) services, owners of battery storage systems can become an essential part of the future smart grids. We propose a thorough first ...

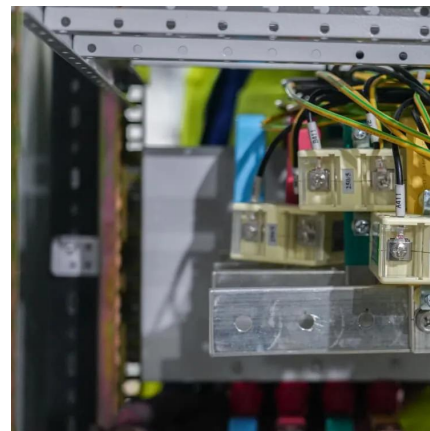


[SITING AND DESIGN GUIDELINES FOR ELECTRIC VEHICLE ...](#)

The majority of the charging operation actually occurs inside the vehicle's on-board charger, where the conversion from alternating current (AC) to direct current (DC) takes place at ...

[Grid-Scale Battery Storage: Frequently Asked Questions](#)

By charging the battery with low-cost energy during periods of excess renewable generation and discharging during periods of high demand, BESS can both reduce renewable energy ...



[Comprehensive Overview of EV Charging Regulations ...](#)

Explore the latest EV Charging Regulations in Australia for 2024, including standards for compatibility, accessibility, quality, and transparency. ...



Energy management strategy of Battery Energy Storage Station ...

In recent years, the use of large-scale energy storage power supply to participate in power grid frequency regulation has been widely concerned. The charge and discharge cycle ...



Explain the principle of voltage and current regulation when charging ...

During the charging process, the station only regulates the current. The output voltage is set only once, at the beginning of charging, it will be equal to the maximum voltage ...

[OSHA 1926.441: What to Know About OSHA's ...](#)

Learn everything you need to know about OSHA 1926.441, standards for battery handling in the construction industry, without having to ...



Comprehensive optimization of electrical heavy-duty truck battery ...

A pivotal aspect is the introduction of a state-of-charge-dependent scheduling method, which entails real-time regulation of charging output based on the station's combined ...



Precise constant current regulation helps advance fast-charging

In this post, I'll highlight trends in fast charging and the essential role that precise constant current (CC) regulation plays to help enable fast, safe and cost-effective solutions to charge devices ...



Coordinated scheduling of 5G base station energy storage ...

However, these storage resources often remain idle, leading to inefficiency. To enhance the utilization of 5G base station energy storage (BSES), this paper proposes a co-regulation ...



29 CFR 1910.178 (g) (2); Battery Charging Stations for Fork Lifts ...

The purpose of this directive is to clarify the subject standard as it applies to "battery charging" areas where power industrial truck batteries are charged only.



Technical Guidelines on Charging Facilities for Electric ...

This set of technical guidelines supersedes all previous technical guidelines on charging facilities for electric vehicles and shall apply to new charging facilities. Existing charging facilities ...





Energy Storage Regulation Strategy for 5G Base Stations ...

This paper develops a simulation system designed to effectively manage unused energy storage resources of 5G base stations and participate in the electric energy market.



OSHA 1926.441: What to Know About OSHA's Standard for Battery Charging

Learn everything you need to know about OSHA 1926.441, standards for battery handling in the construction industry, without having to wade through legalese.

Contact Us

For catalog requests, pricing, or partnerships, please visit:
<https://motheopreprimary.co.za>