

Are there any requirements for the charging voltage of a 200w photovoltaic panel





Overview

What size charge controller for 200 watt solar panels?

A charge controller's optimal size for a 200-watt solar panel is 20 amps to provide a safety factor in case of variations. With this, you have learned what size charge controller for 200w solar panels is accurate. You should move towards learning what size charge controller for 250w solar panels. What Size Charge Controller for 250W Solar Panels?

.

Does a 250 watt solar panel need a charge controller?

A 250-watt panel, for instance, typically generates 12 amps of electricity. For this reason, a 250-watt solar array requires a 14.4-amp charge controller. When shopping for a charge controller, it's also important to think about the voltage of the system. Commonly used voltages for the charge controller are 12, 24, and 48 volts.

How many volts should a solar charge controller run?

Commonly used voltages for the charge controller are 12, 24, and 48 volts. In an ideal situation, the panel's nominal voltage would coincide with that of the controller. therefore, a 20 volt 15 amp charge controller should be used with a 250-watt solar panel operating at 20 volts. What Size Charge Controller for 300W Solar Panels?

.

How many amps should a solar charge controller be rated?

If both the solar panel and the battery bank are rated at 24V, the charge controller should be rated at 10 Amps or more. However, if your 200W solar panel is rated at 24V, and your battery bank is only rated at 12V, the charge controller should be rated at 20 Amps or more if it's an MPPT, and at 10 amps or more if it's a PWM.



Do solar panels need a charge controller?

If a solar panel produces less than 2 watts per 50 amp-hours of battery capacity, you likely do not require a charge controller. Anything beyond that, you are liable. Solar charge controllers are crucial to the safety and effectiveness of solar power systems. You cannot connect solar panels directly to a battery and expect them to function.

What is a solar panel nominal voltage?

Nominal voltage is an approximate solar panel voltage that can help you match equipment. The voltage is usually based on the nominal voltages of appliances connected to the solar panel, including but not limited to inverters, batteries, charge controllers, loads, and other solar panels.



Are there any requirements for the charging voltage of a 200w phot



[How Many Batteries Do I Need for a 200 Watt Solar ...](#)

For a 200 watt solar panel, the size (capacity) of the battery required depends mainly on your electricity demand, lighting conditions and ...

[What can a 200-Watt solar panel charge?](#)

The open circuit voltage of a 200 W solar panel is 24V, hence you cannot connect it directly with a 12V battery. You will need a charge controller to charge 12V batteries from a 200-watt solar ...



How long does it take to charge a battery with a 200-watt solar panel

Many wonder how long it takes to charge a battery using a 200-watt solar panel. The answer to this question can depend on various factors. Factors such as the capacity of the ...



[How Much Will A 200W Solar Panel Charge? , Blue Carbon](#)

This article focuses on the daily energy yield of a 200W solar panel, the types of electrical loads it can support, and how to properly size the corresponding energy storage.



[What Size Charge Controller Do You Need For A ...](#)

A 200 watt 12V solar panel needs a 17-amp charge controller. You can get the required size for your solar panel by dividing its wattage by its voltage



[Solar Panel Fuse Calculator: How to Determine the ...](#)

Solar Panel Fuse Calculator is a useful tool that helps determine the correct fuse size required for a power system.



[What Size Charge Controller For 200w Solar Panel](#)

To determine the appropriate size charge controller for a 200W solar panel, you need to consider the panel's voltage and the battery bank's ...





Harnessing the Sun: Unlock the Power of a 200 Watt Solar Panel

How Do 200W Solar Panels Work? The 200 watts solar panel works in a similar way that any other solar panel would work. The ability of a solar panel in providing you the ...



[Question about AMP output from 200w Renogy panel](#)

The type of charger takes the watts from the panels (panel voltage x panel current) and transforms it down to battery charging voltage x amps. The voltage goes down ...



Solar Basics: Voltage, Amperage & Wattage , The Solar Addict

Consider a scenario where you have a 200W solar panel with a working voltage of 20V and an amperage of 10A. To charge a 12V battery system, you're going to need a charge ...



[59 Solar PV Power Calculations With Examples Provided](#)

Learn the 59 essential solar calculations and examples for PV design, from system sizing to performance analysis. Empower your solar planning or ...





What Size Charge Controller Do You Need For A 200w Solar Panel?

A 200 watt 12V solar panel needs a 17-amp charge controller. You can get the required size for your solar panel by dividing its wattage by its voltage

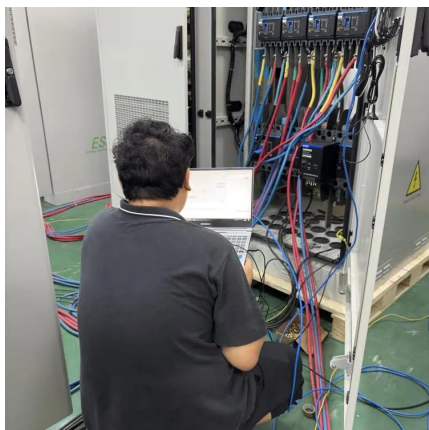


All You Need to Know about Amps, Watts, and Volts in Solar

Understand Amps, Watts, and Volts in Solar energy systems with our comprehensive guide. Learn how these key electrical units impact solar power efficiency and performance. Perfect ...

[How much can 200w solar photovoltaic power ...](#)

The potential of a 200-watt solar photovoltaic (PV) system to generate power and subsequently charge different devices varies significantly ...



[What Size Charge Controller for 200W Solar Panels?](#)

Simply divide the solar panel's power by the voltage to get the necessary size. A charge controller's optimal size for a 200-watt solar panel is ...



200 Watt Portable Solar Panel for Power Station, RV Essentials, 200W

...

FAQ about ZOUPW 200W Solar Panel Portable

Q1: Why is the actual power output of my 200 watt solar panel portable is lower than 200W in practical use? The given ...



[What size charge controller for a 200W solar panel?](#)

In general, if your 200W solar panel and battery bank are both rated at 12 Volts (nominal), the charge controller should be rated at 20 Amps ...

[Several things about solar led lights you need to know](#)

2. The power of the solar-powered panel must match the power of the battery. Some manufacturers' solar lights are marked with a 15A battery, but they are equipped with a 6V15W ...



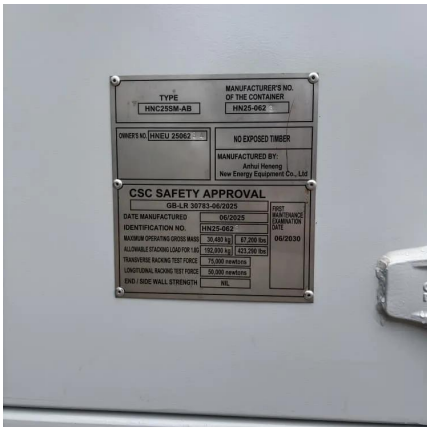
[What size charge controller for a 200W solar panel?](#)

In general, if your 200W solar panel and battery bank are both rated at 12 Volts (nominal), the charge controller should be rated at 20 Amps or more. If both the solar panel ...



What Size Charge Controller for 200W Solar Panels?

Simply divide the solar panel's power by the voltage to get the necessary size. A charge controller's optimal size for a 200-watt solar panel is 20 amps to provide a safety factor ...



How much can 200w solar photovoltaic power generation charge

The potential of a 200-watt solar photovoltaic (PV) system to generate power and subsequently charge different devices varies significantly based on several critical parameters.

Ultimate Guide to Solar Panel Voltage

Solar panel voltage and battery voltage are different, where the former exceed 20-30% of the working voltage of the battery to ensure normal ...



How Many Volts Does a Solar Panel Generate? - ...

Solar panel voltage is a critical factor in solar energy production, with outputs ranging from 5 to 40 volts, depending on the type and conditions.



[Ultimate Guide to Solar Panel Voltage](#)

Solar panel voltage and battery voltage are different, where the former exceed 20-30% of the working voltage of the battery to ensure normal battery charging. That means a ...

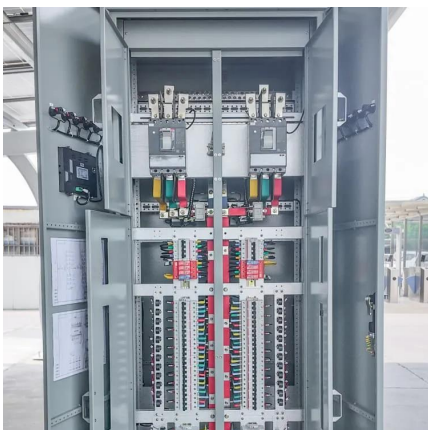
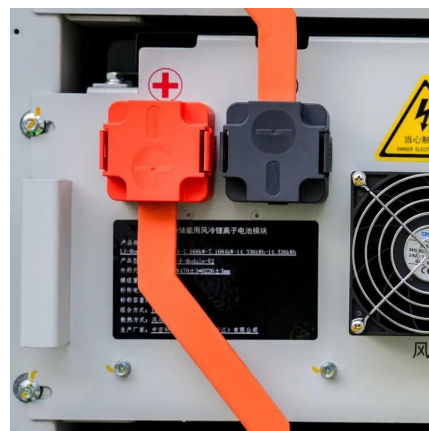


[How to Properly Fuse Your Solar System , Renogy US](#)

Need to repair your solar panel? Learn how to fuse it safely and efficiently in this comprehensive guide. Discover expert tips, precautions, and step-by-step instructions for a successful DIY fix.

[200 Watt Portable Solar Panel, 18V , Power Home](#)

200W foldable solar PV panel for sale. With 18V operating voltage, 4 solar panels, pv panel is portable and efficient. Using monocrystalline silicon panels, solar ...



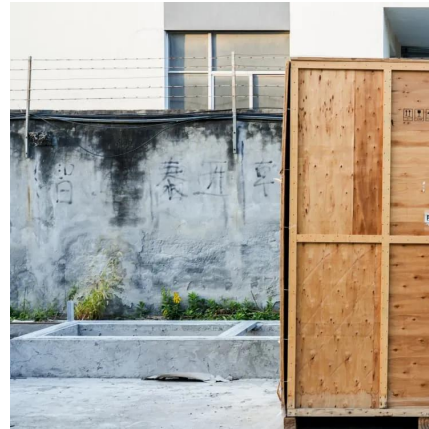
How Many Batteries Do I Need for a 200 Watt Solar Panel?

For a 200 watt solar panel, the size (capacity) of the battery required depends mainly on your electricity demand, lighting conditions and the number of days of range you ...



200 watt Solar Module (GP-PV-200M)

The GP-PV-200M, a 200-watt Solar Panel from Go Power!, is a high-efficiency monocrystalline solar module that provides outstanding performance and cost ...



[What Size Solar Panel To Charge 100Ah Battery?](#)

Now, there are many different 100Ah batteries, and you can use many different solar panel sizes to charge them. To help you figure out what size PV panels ...

[What can a 200-Watt solar panel charge?](#)

The open circuit voltage of a 200 W solar panel is 24V, hence you cannot connect it directly with a 12V battery. You will need a charge controller to charge 12V ...



[100W VS 200W SOLAR PANEL DIFFERENCES AND MORE](#)

100 pieces of 200W solar power generation The first factor in calculating solar panel output is the power rating. There are mainly 3 different classes of solar panels: 1. Small solar panels: 50W ...



Contact Us

For catalog requests, pricing, or partnerships, please visit:
<https://motheopreprimary.co.za>