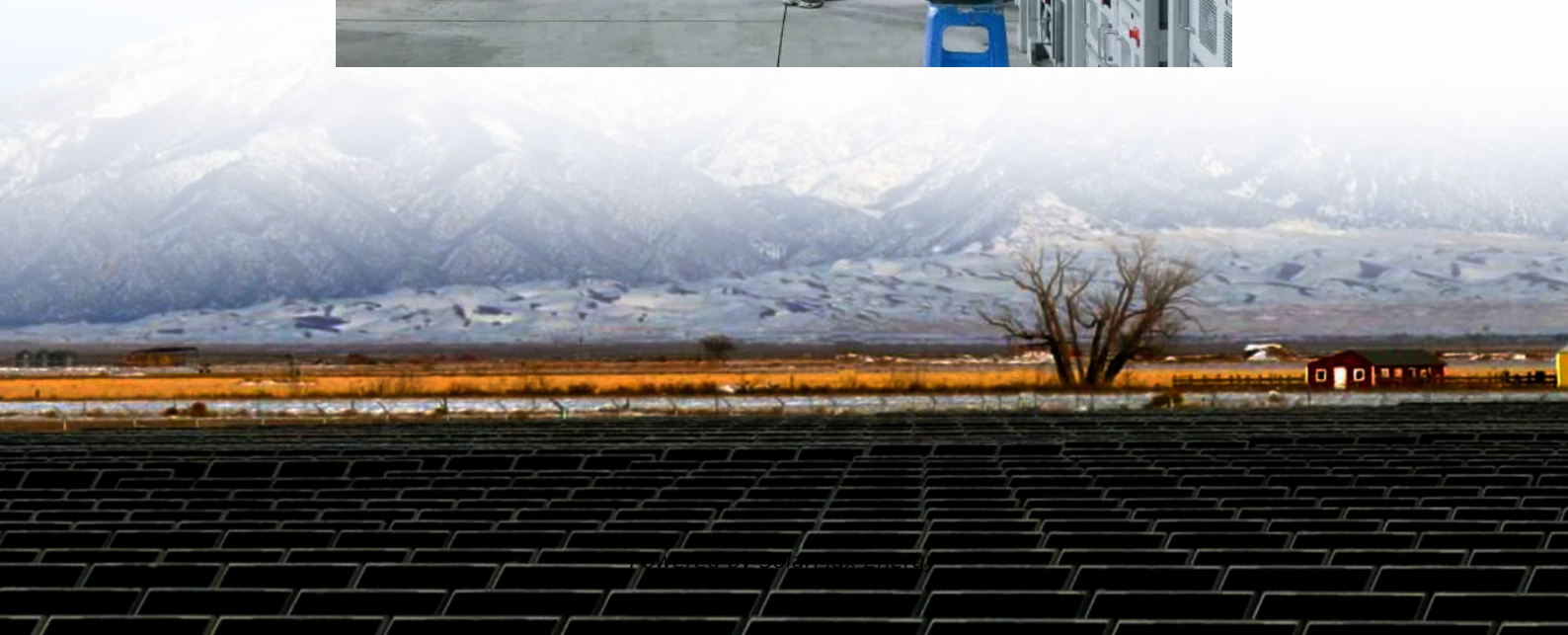


# **48V power supply design for communication base station**





## Overview

---

Why is a -48 voltage system important?

In the world of telecommunications, ensuring uninterrupted power supply is crucial for maintaining reliable communication networks. Telecom power systems, specifically -48 voltage systems, play a vital role in providing power to various telecom equipment and network infrastructure.

What is a -48 telecom power system?

Telecom power systems, specifically -48 voltage systems, play a vital role in providing power to various telecom equipment and network infrastructure. In this blog post, we will guide you through the process of installing a -48 telecom power system, highlighting key considerations and best practices for a successful implementation.

What is a 48 volt DC power source?

This technique has gained widespread support toward optimization of components and circuits and achieving industry-wide adoption in the data-center-related businesses. 48-V DC power is applied to the AC/DC power source to the DC/DC power input terminal of each computation board.

Why is a -48 V DC a positive ground system?

The short story is that -48 V DC, also known as a positive-ground system, was selected because it provides enough power to support a telecom signal but is safer for the human body while doing telecom activities.

Can a 48 volt DC power supply save a data center?

(Fig. 5) As shown in this example, when the power per rack exceeds 10 kW, the power distribution loss generated by traditional 12-V DC power is said to reach an intolerable level, but a 48-V DC power supply significantly contributes to power saving for a data center.



What is a -48V back-up battery converter?

The -48V back-up battery converter is similar in construction and complexity to the single-output, high-power VoIP converter previously discussed. The power factor corrected (PFC) AC/DC produces the supply voltage for the 3G Base station's RF Power amplifier (typ. +27V) and the bus voltage for point-of-load converters.



## 48V power supply design for communication base station

---



### 48V Telecom Power Supply

Description Product Description The embedded communication power supply system (Rectifier System) is suitable for small program-controlled switches, ...

### [Telecom Base Station Backup Power Solution: Design ...](#)

This guide outlines the design considerations for a 48V 100Ah LiFePO4 battery pack, highlighting its technical advantages, key design ...



### Is it essential to a data center? The reasons why a 48-V power ...

Accordingly, this article discusses problem solutions applied to data centers with 48-V power feeding. The next-generation high-speed communication 5G services have started ...

### [Why does most of the communication power supply ...](#)

In communication, we often find that most of the communication power supplies are powered by -48V. In fact, there are many reasons and ...





## Telecom Base Station Backup Power Solution: Design Guide for 48V ...

This guide outlines the design considerations for a 48V 100Ah LiFePO4 battery pack, highlighting its technical advantages, key design elements, and applications in telecom ...



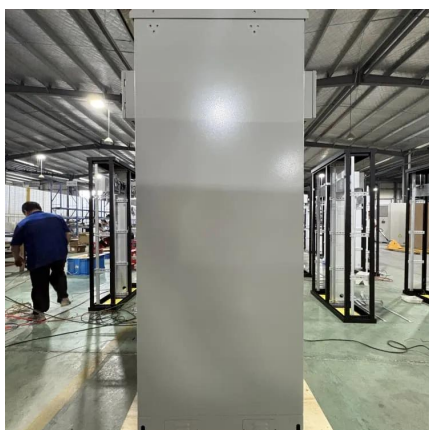
## 48v communication power supply

The 48V communication power supply serves diverse purposes across various industries, ensuring seamless communication and operational efficiency: Telecommunications: Powers ...



## High-Density Embedded Power Supply ETP48200 C2a6 48V ...

High-Density Embedded Power Supply ETP48200 C2a6 48V Inverter System for Communication Base Station, Find Details and Price about Embedded Power Supply ETP48200 C2a6 from ...





## Optimizing the power supply design for ...

Communication base station power system design scheme When selecting a power system design scheme, it is necessary to consider a variety ...



### **Why does most of the communication power supply use -48V power supply?**

In communication, we often find that most of the communication power supplies are powered by -48V. In fact, there are many reasons and considerations for such a standard. ...



## Lithium Iron Battery for Communication Base Stations

This 48V 200AH iron lithium energy storage battery is designed for communication base stations, offering reliable power in a rack-type configuration. It ensures long-lasting performance, high ...



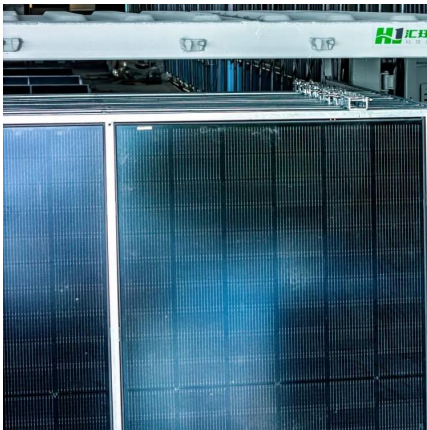
### Why does most of the communication power supply ...

Most of the communication power supplies adopt -48V power supply is determined by the historical reasons and safety factor and technical ...



## Why does the communication base station use -48V power supply?

The voltage of +48V and -48V is equal, but the current flow is not the same. +48V flow to 0V, 0V flow to -48V. So -48V voltage is the communication power supply standards of ...



## 48V to 12V Buck Converter Application in Communication Base Station

A standard power input for base stations is 48V DC, favored for its low transmission losses, high device compatibility, and operational safety. However, most internal components--such as ...

## 5G communication challenge to switching power ...

5G communication requires more micro base station at the RAN side, so, the switching power supply of rectifier, -48V power supply, HVDC, DCDC ...



## How to Make the Leap to 48V Electrical Architectures

How to Make the Leap to 48V Electrical Architectures Even without taking the transition from internal combustion engines to battery electric vehicles (BEVs) into account, the electrical ...





## Communication Base Station Backup Battery

Communication base station backup batteries are designed to provide a consistent and reliable power supply during electricity outages. This ensures ...

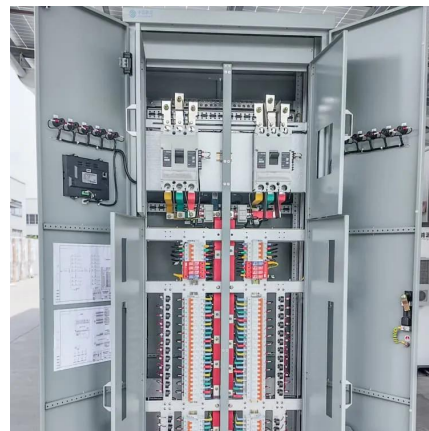


## Communications System Power Supply Designs

Voice-over-Internet-Protocol (VoIP), Digital Subscriber Line (DSL), and Third-generation (3G) base stations all necessitate varying degrees of complexity in power supply design. We ...

## **How to Install a -48V Telecom Power System: A Step-by-Step ...**

Learn how to install a -48V telecom power system step-by-step. This guide covers equipment selection, design considerations, wiring, and essential maintenance tips for reliable ...



## **Is it essential to a data center? The reasons why a 48-V power supply**

Accordingly, this article discusses problem solutions applied to data centers with 48-V power feeding. The next-generation high-speed communication 5G services have started ...





## [Building a Better -48 VDC Power Supply for 5G and ...](#)

In this article, we present a stackable and interleaving multiphase high voltage inverting buck-boost controller that will resolve all the requirements/challenges ...

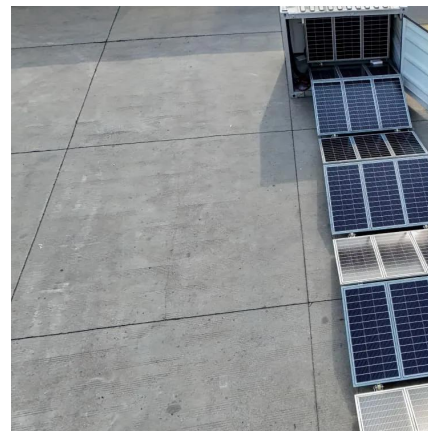


## [Building a Better -48 VDC Power Supply for 5G and Next](#)

In this article, we present a stackable and interleaving multiphase high voltage inverting buck-boost controller that will resolve all the requirements/challenges to meet today's 5G telecom ...

## **Empowering Base Stations: Unveiling the 48V 50Ah LiFePO4 ...**

Explore its modular design, advanced Battery Management System (BMS), and real-time monitoring capabilities through WIFI communication technology. Learn how this solution ...



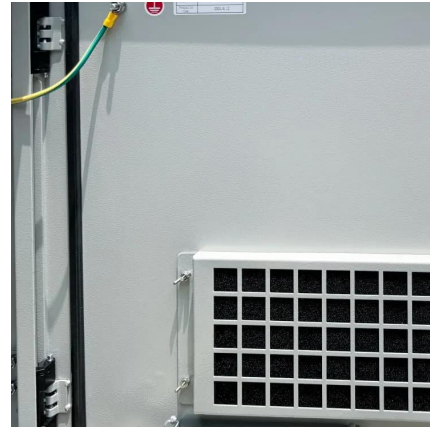
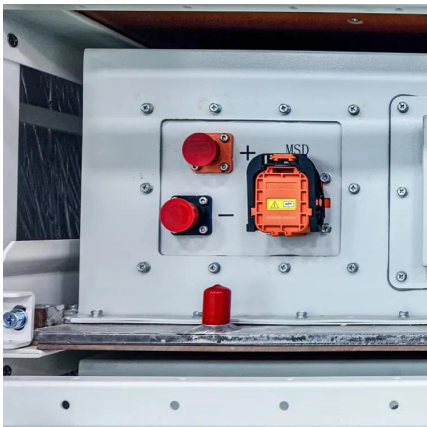
## [Why does the communication base station use -48V ...](#)

The voltage of +48V and -48V is equal, but the current flow is not the same. +48V flow to 0V, V0 flow to -48V. So -48V voltage is the ...



## Communication Base Station Power Supply

They adopt a standardized cabinet installation method, providing reliable backup power for systems such as access network equipment, remote switching offices, mobile ...

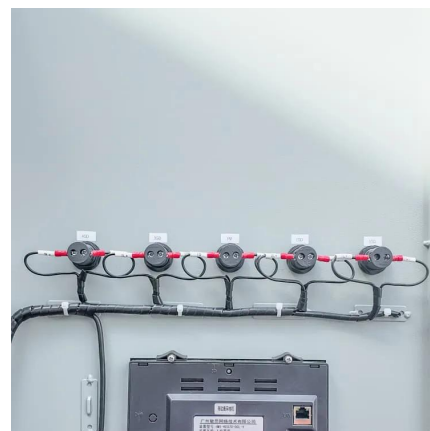


## '-48VDC Rectifier System up to 3kW Telecom ...

Smart HelSys system is designed for a wide range of telecommunication applications such as fibre optic network, satellite communication ground ...

## **Network Communication**

AC/DC Rectifier Modules: Utilized in embedded power sources, outdoor power supplies, indoor power supplies, and core data center large power systems at -48V, these modules supply ...



## **48V Intelligent Lithium Battery , Communication Backup Power**

2. Auxiliary power supply: the auxiliary switching power supply achieves load shifting to save the expansion costs for base station 3. Boost power supply: the stable ...



## Contact Us

---

For catalog requests, pricing, or partnerships, please visit:  
<https://motheopreprimary.co.za>